

**2008
NEW MEXICO
COMMUNITIES AT RISK ASSESSMENT PLAN**



**ENERGY, MINERALS AND NATURAL RESOURCES DEPARTMENT
FORESTRY DIVISION
December 2008
532 Communities at Risk
51 CWPP's completed**

Cover photos: Penasco Fire (top), Taos Pines (bottom right and left)
Photos by: Eddie Tudor, Ernie Lopez and Arnie Friedt

Prepared by:
Donald Griego
Terrell Treat
Trent Botkin
EMNRD –Forestry Division

Table of Contents

Executive summary	4
2008 Accomplishments	5
Table 1 - Completed Community Wildfire Protection Plans	5
Table 2 – List of Communities at Risk	7
Table 3- List of Communities at Risk by County	18
Table 4- Communities at risk not in a CWPP	29
Appendix 1 – Community Wildfire Protection Plan State Map	30
Appendix 2 – Community Wildfire Protection Plan Boundary Maps	31
Appendix 3 – Community Protection Zone Map	62
Appendix 4 – Community Wildfire Protection Plan Checklist	63
Appendix 5 – Reference List	64

EXECUTIVE SUMMARY

The New Mexico Fire Planning Task Force (NM-FPTF) was created by the 2003 New Mexico Legislature to identify Wildland Urban Interface (WUI) areas most vulnerable to danger from wildland fires in the State of New Mexico and to develop standards for building codes and ordinances that would reduce the threat of wildland fires to those communities.

WUI Codes

The NM-FPTF has adopted the International Code Councils' Wildland Urban Interface Code. New Mexico counties and communities are encouraged to adopt these codes and ordinances to further reduce the threat of wildland fires to their communities.

CWPP

The NM-FPTF reviews new or updated Community Wildfire Protection Plans (CWPP) each year and approves those that meet all of the criteria set forth by the Healthy Forest Restoration Act. Completed and approved Community Wildfire Protection Plans are placed on the Forestry Division website www.nmforestry.com within the Fire Management section. Once there click on the New Mexico Fire Plan, then look to the right top corner and click on CWPP.

<http://www.emnrd.state.nm.us/FD/FireMgt/cwpps.htm>

Each CWPP contains a list of the communities at risk from wildfire. These lists are compiled to create the New Mexico Communities at Risk list, see Table 2. Communities may be added or deleted or the community wildfire risk rating changed with the development of a new CWPP or with the revision of an older CWPP. The NM-FPTF publishes any updates and revisions to the list and provides a finalized report to the Governor and New Mexico legislature by December 15 of each year.

History (CPZ to CWPP)

In 2003, the state was divided into 18 Community Protection Zones (CPZ) see Appendix 3, Community Protection Zone Map. Inside these zones were 234 communities that were evaluated on their risk from wildland fire. Using standard hazard risk rating methodology these communities were rated as high, medium or low risk. Since then, communities have been encouraged to develop a Community Wildfire Protection Plan (CWPP). Almost all of the communities initially listed in the CPZ have been reevaluated by a CWPP. In 2009 we will have only a handful of areas not covered by a CWPP. A map showing the statewide status of the CWPP progress is in Appendix 1.

Value of a CWPP

A CWPP includes ways a community could reduce structural ignitability, identifies areas that need vegetative fuels removed to reduce risk and severity of wildfires, and evaluates a communities' fire fighting capacity. This planning process helps a community come together by identifying their risk to fire, their community values, and their important infrastructure. These concerns are factored together to create a prioritized list of areas to be treated and the potential treatment options. The CWPP provides communities with the opportunity to influence where and how federal agencies implement fuel reduction projects on federal lands and how federal funds are distributed for projects on non-federal lands. A CWPP is a requirement to many grants and funding opportunities. The communities listed annually in this publication will replace the January 2001 Federal Register listing for communities at risk. The information will be forwarded to federal cooperators for their use and will reside on New Mexico State Forestry's website www.nmforestry.com.

It should be noted that the communities listed within the CWPPs are by no means a complete list of areas at risk from wildland fire. Each CWPP has made a concerted effort to list all the communities within their plan's boundary. The Communities at Risk subcommittee recognizes that some communities in the state of New Mexico are not currently listed in a CWPP, see Table 4. The NM-FPTF encourages all communities within New Mexico to be in a CWPP.

How do I get started?

A CWPP can take a variety of forms based on the publication "Preparing a Community Wildfire Protection Plan: A Handbook for Wildland-Urban Interface Communities" available at www.safnet.org. Communities are encouraged to contact their local Forestry Division district office for assistance in developing or revising a CWPP, for information on Wildland Urban Interface Codes and information on fuel hazard reduction programs.

2008 Accomplishments

Twenty-one new CWPPs were presented to the Communities at Risk subgroup for approval by the NM-FPTF. Sixteen countywide plans were adopted and five community/regional plans were written and adopted. This totals 51 CWPPs for the state of New Mexico, see Table 1 for a list of plans. Four additional plans are in the development process in 2009.

These 51 CWPPs identify 532 communities at risk from wildland fire. The number of New Mexico Communities at Risk list grew from 300 to 532 for 2008. These communities were added through the development or revision of a CWPP. Of the 532 communities, 266 are listed as high risk, 182 are listed as medium risk and 84 are listed as low risk from wildland fire. This past year, 12 communities risk from wildland fire was elevated to a higher level, while an additional 9 communities lowered their ranking. See Table 2 for a list of Communities at Risk.

The International Code Council held a class on the Wildland Urban Interface Codes with 20 people in attendance. The WUI code planning kit (CD) was given to those in attendance. Another 40 planning kits were distributed in other meetings throughout the state to assist communities and counties in developing and adopting WUI codes.

Requests for fuels reduction projects continue to exceed the available funding. The USDA Forest Service has made funds available for these treatments through the National Fire Plan. The Bureau of Land Management, through an agreement with the New Mexico Association of Counties, has funded both treatments and public outreach and education projects across the state. Local community groups with state and federal partners continue to develop CWPPs, identify fuel hazard reduction projects and treat acres across the state.

**TABLE 1
Completed Community Wildfire Protection Plans**

CWPP Name	Year of Completion
Candy Kitchen	2006
Catron County	2005
Catron County - Apache Creek	2007
Catron County - Datil	2007
Catron County - Horse Mountain	2007

Catron County - Jewett Gap	2007
Catron County - Luna	2007
Catron County - Mogollon	2007
Catron County - Pie Town	2007
Catron County - Reserve	2007
Catron County - Wildhorse	2007
Catron County - Willow Creek	2007
Cibola County	2006
Claunch-Pinto	2008
Colfax County	2008
Colfax County -Ute Park	2006
Colfax County -Taos Pines	2006
Colfax County - Hidden Lake	2006
Colfax County - Elk Ridge	2006
Cuba	2006
Curry County	2008
Cimarron Watershed Alliance Communities	2008
DeBaca County	2008
East Mountain	2006
Eddy County	2008
Enchanted Circle	2005
Grant County	2006
Guadalupe County	2008
Harding County	2008
Lea County	2008
Lincoln County	2008
McKinley County	2008
Middle Rio Grande Bosque	2008
Mora County	2005
Otero County	2004
Quay County	2008
Questa	2008
Rio Arriba County	2007
Roosevelt County	2008
Ruidoso Area	2004
Sandoval County	2008
San Juan Basin	2006
San Miguel County	2008
Santa Clara Pueblo	2007
Santa Fe County	2008
Sierra County	2005
Socorro County	2006
Taos County	2007
Torrance County	2008
Union County	2008
Upper Chama	2008

These Community Wildfire Protection
Plans may be viewed at
[http://www.emnrd.state.nm.us/FD/Fire
Mgt/cwpps.htm](http://www.emnrd.state.nm.us/FD/FireMgt/cwpps.htm)

TABLE 2
Communities at Risk

CAR	Rating	CWPP	CWPP	H	M	L
126 Corridor (7 Springs to Deer Lake)	M	Sandoval	1		1	
485 Corridor (Gilman, Canones)	H	Sandoval	1	1		
A102	H	Torrance	1	1		
Abbott	L	Colfax	1			1
Abeytas	H	Socorro County and MRG	1	1		
Agua Fria	M	Colfax	1		1	
Albuquerque	M	MRG	1		1	
Alcalde	M	Rio Arriba	1		1	
Algodones	M(H)	Sandoval and MRG	1	1		
Alley Place	M	East Mountain	1		1	
Alto	H	Ruidoso & Lincoln	1	1		
Amalia	M	Enchanted Circle & Taos County	1		1	
Amistad	L	Union	1			1
Ancho	H	Lincoln	1	1		
Angel Fire	H	Enchanted Circle & Colfax	1	1		
Angostora	H	Taos County	1	1		
Angostura	M	Sandoval	1		1	
Angus	H	Ruidoso	1	1		
Anton Chico	M	Guadalupe	1		1	
Apache Creek	H(M)	Catron County & Apache Creek	1	1		
Apache Ridge	H	Santa Fe	1	1		
Arabela	H	Lincoln	1	1		
Aragon	H(M)	Catron County	1	1		
Arch	L	Roosevelt	1			1
Areas 1,2,3 (Jemez Springs)	H	Sandoval	1	1		
Arroyo Hondo	M	Enchanted Circle & Taos County	1		1	
Arroyo Hondo	L	Santa Fe	1			1
Arroyo Seco	M	Enchanted Circle & Taos County	1		1	
Artesia	M	Eddy	1		1	
Atoka	L	Eddy	1			1
Aztec	H	San Juan Basin	1	1		
Bard	L	Quay	1			1
Bartlett	M	Colfax	1		1	
Barton	M	East Mountain	1		1	
Bayard	M	Grant County	1		1	
Belen	H	MRG	1	1		
Bella Vista	M	Santa Fe	1		1	
Bellview	M	Curry	1		1	
Bent	M	Otero County	1		1	
Bernal / Tecolote / Lagunita	H	San Miguel	1	1		
Bernalillo	M	Sandoval and MRG	1		1	
Bernardo	M(H)	Socorro County and MRG	1	1		
Biggs	H	Upper Chama	1	1		
Bishop's Lodge	M	Santa Fe	1		1	

Black Lake/Black Lake Resort	H	Enchanted Circle & Colfax	1	1		
Black Rock	H	McKinley	1	1		
Blanco	H	San Juan Basin	1	1		
Bloomfield	H	San Juan Basin	1	1		
Bluewater	M	Cibola County	1		1	
Bluewater Lake	H	McKinley	1	1		
Bonito	H	Ruidoso	1	1		
Bosque Farms	H	MRG	1	1		
Bosquecito	H	Socorro County	1	1		
Brazos	M	Rio Arriba	1		1	
Brazos Canyon	H	Upper Chama	1	1		
Broadview	M	Curry	1		1	
Buckman Road	H	Upper Chama	1	1		
Budaghers	M	Sandoval	1		1	
Bull Creek	H	San Miguel	1	1		
Burro Mountain	M	Grant County	1		1	
Camel Tracks	L	Santa Fe	1			1
Cañada	H	Sandoval	1	1		
Cañada de los Alamos	M	Santa Fe	1		1	
Candy Kitchen	M	Candy Kitchen	1		1	
Canjilon	H	Upper Chama	1	1		
Canon	H	Sandoval	1	1		
Canon	L	Taos County	1			1
Canoncito	M	Santa Fe	1		1	
Canoncito (East Mountain)	H	East Mountain	1	1		
Canones	M	Rio Arriba	1		1	
Capitan	L	Lincoln	1			1
Capulin	M	Union	1		1	
Carisbrooke	M	Colfax	1		1	
Carlsbad	M	Eddy	1		1	
Carlsbad Caverns	L	Eddy	1			1
Carnuel	M	East Mountain	1		1	
Carrizo Canyon	H	Ruidoso	1	1		
Carrizozo	L	Lincoln	1			1
Carson	M	Taos County	1		1	
Casa Loma	H	East Mountain	1	1		
Causey	L	Roosevelt	1			1
Cebolla	M	Upper Chama	1		1	
Cedar Creek	H	Ruidoso	1	1		
Cedar Crest	H	East Mountain	1	1		
Cedar Grove	H	Santa Fe	1	1		
Cedro	H	East Mountain	1	1		
Cerrillos	M	Santa Fe	1		1	
Cerro	L	Enchanted Circle & Taos County	1			1
Chacon	H	Mora County	1	1		
Chama	L	Upper Chama	1			1
Chama West	M	Upper Chama	1		1	
Chamisal	M	Enchanted Circle & Taos County	1		1	
Chamita	M	Rio Arriba	1		1	
Chaparral Girl Scout Camp	H	Cuba	1	1		

Chi-Chi-Tah	H	McKinley	1	1		
Chili	M	Rio Arriba	1		1	
Chilili Land Grant	H	East Mountain & Torrance	1	1		
Chimayo	L	Santa Fe	1			1
Chloride	H	Sierra County	1	1		
Chupadero	M	Santa Fe	1		1	
Church Rock	M	McKinley	1		1	
Cimarron	H	Colfax & CWA	1	1		
Clayton	L	Union	1			1
Cleveland	H	Mora County	1	1		
Clines Corners	M	Torrance	1		1	
Cloudcroft	H	Otero County	1	1		
Clovis	M	Curry	1		1	
Cochiti Lake	M	Sandoval	1		1	
Cochiti Mesa	H	Greater Jemez & Sandoval	1	1		
Cochiti Pueblo	M	Sandoval	1		1	
Colfax	M	Colfax	1		1	
Colonias	M	Guadalupe	1		1	
Colonias, Upper / Lower	H	San Miguel	1	1		
Conchas Lake	M	San Miguel	1		1	
Cordova	L	Santa Fe	1			1
Corona	M	Lincoln & Torrance & Claunch-Pinto	1		1	
Corrales	M(H)	Sandoval and MRG	1	1		
Costilla	M	Enchanted Circle & Taos County	1		1	
Cottonwood	L	Eddy	1			1
Cousins	H	McKinley	1	1		
Cowles	H	San Miguel	1	1		
Cox Canyon	H	Otero County	1	1		
Coyote Creek	M	Catron County	1		1	
Crestview, Twin Buttes, Crested Butte	M	McKinley	1		1	
Crownpoint	M	McKinley	1		1	
Cruzville	M	Catron County	1		1	
Cuba	M	Cuba & Sandoval	1		1	
Cumbres & Toltec Scenic Railroad	H	Upper Chama	1	1		
Cundiyo	M	Santa Fe	1		1	
Dalton Canyon	H	San Miguel	1	1		
Datil Area	M(H)	Catron County & Datil	1	1		
Davenport	H	Catron County & Davenport	1	1		
Deer Canyon Preserve*	H	Torrance & Claunch-Pinto	1	1		
Deer Lake	H	Cuba & Sandoval	1	1		
Dennis Chavez Estates	H	East Mountain	1	1		
Des Moines	L	Union	1			1
Diamante	H	Upper Chama	1	1		
Dora	H	Roosevelt	1	1		
Dry Canyon	H	Otero County	1	1		
Duran	H	Torrance	1	1		
Eagle Creek	H	Ruidoso	1	1		
Eagle Nest	L	Enchanted Circle & Colfax & CWA	1			1
Echo Hills	H	Torrance	1	1		

El Morro	L	Cibola County	1			1
El Padro	L	Enchanted Circle & Taos County	1			1
El Porvenir	H	San Miguel	1	1		
El Refugio	H	East Mountain	1	1		
El Salto	H	Taos County	1	1		
El Talbazon	H	East Mountain	1	1		
El Valle	M	Taos County	1		1	
Elida	H	Roosevelt	1	1		
Elizabethtown	L	Colfax	1			1
Elk Ridge	H	Colfax	1	1		
Elk Springs	H	Catron County	1	1		
Embudo	L	Rio Arriba	1			1
Encino	M	Torrance	1		1	
Endee	L	Quay	1			1
Endee Truckstop	M	Quay	1		1	
Ensenada	L(M)	Rio Arriba & Upper Chama	1		1	
Escabosa	M	East Mountain	1		1	
Espanola	M	Santa Clara Pueblo	1		1	
Estancia	M	Torrance	1		1	
Eunice	H	Lea	1	1		
Evegreen Hills	H	Sandoval	1	1		
Fairview	M	Rio Arriba	1		1	
Farley	L	Colfax	1			1
Farmington	H	San Juan Basin	1	1		
Floyd	H	Roosevelt	1	1		
Folsom	M	Union	1		1	
Forest Park	H	East Mountain	1	1		
Forest Road 422 *	H	Torrance & Claunch-Pinto	1	1		
Forest Valley	H	Torrance	1	1		
Forrest	L	Quay	1			1
Fort Heron	H	Upper Chama	1	1		
Fort Stanton	L	Lincoln	1			1
Fort Sumner Village	M	DeBaca	1		1	
Fort Wingate	M	McKinley	1		1	
Fourth of July Campground	H	Torrance	1	1		
Frost Road	M	East Mountain	1		1	
Gallina Canyon	H	Taos County	1	1		
Gallinas	H	San Miguel	1	1		
Gallup, Juniper Hills	M	McKinley	1		1	
Game Road	H	Torrance	1	1		
Gamerco	M	McKinley	1		1	
Gan Eden	L	Santa Fe	1			1
Gardiner	M	Colfax	1		1	
Gascon	H	Mora County	1	1		
Gavilan Canyon	H	Ruidoso	1	1		
Girls Scout Ranch	H	Sandoval	1	1		
Gladstone	L	Union	1			1
Glencoe	H	Lincoln	1	1		
Glenrio	L	Quay	1			1
Glenwood	M	Catron County	1		1	

Glorieta Conference Center	M	Santa Fe	1		1	
Glorieta Estates	M	Santa Fe	1		1	
Glorieta Mesa	H	Santa Fe	1	1		
Gonzales Ranch	H	San Miguel	1	1		
Grady	M	Curry	1		1	
Grass Mountain	H	San Miguel	1	1		
Grenville	L	Union	1			1
Guadalupita	H	Mora County	1	1		
Hanover	H	Grant County	1	1		
Happy Valley	L	Eddy	1			1
Hayden	L	Union	1			1
Hernandez	H	Rio Arriba	1	1		
Hidden Lake	H	Colfax	1	1		
Hidden Valley	H	San Miguel	1	1		
High Rolls	H	Otero County	1	1		
Highway 84	H	San Miguel	1	1		
Hillsboro	M	Sierra County	1		1	
Hobbs	H	Lea	1	1		
Holman	H	Mora County	1	1		
Homestead Estates	L	Torrance	1			1
Hondo / Tinnie	M	Lincoln	1		1	
Hop Canyon	H	Socorro County	1	1		
Hope	L	Eddy	1			1
Horse Mountain	M	Catron County & Horse Mountain	1		1	
House	H	Quay	1	1		
Hyde Park	H	Santa Fe	1	1		
Idlewild	H (L)	Enchanted Circle & Colfax	1	1		
Ima	L	Quay	1			1
Iyanbito	M	McKinley	1		1	
Jal	H	Lea	1	1		
James Canyon	H	Otero County	1	1		
Jarales (Socorro County)	H	MRG	1	1		
Jarales (Valencia County)	H	MRG	1	1		
Jemez Pueblo	M	Sandoval	1		1	
Jemez Springs	H	Sandoval	1	1		
Jewett Gap	H	Catron County & Jewett Gap	1	1		
Joel	M	Eddy	1		1	
Jordan	L	Quay	1			1
Juan Thomas	H	East Mountain	1	1		
Kenna	H	Roosevelt	1	1		
Kingston	M	Sierra County	1		1	
Kiowa Village	H	Taos County	1	1		
Knowles	H	Lea	1	1		
La Barberia	H	Santa Fe	1	1		
La Cienega	L	Santa Fe	1			1
La Cueva	H	Sandoval	1	1		
La Cueva (Mora)	M	Mora County	1		1	
La Cueva Canyon	M	Santa Fe	1		1	
La Huerta	L	Eddy	1			1
La Jara	M	Cuba & Sandoval	1		1	

La Jolla	M	Santa Fe	1		1	
La Joya	H	Socorro County and MRG	1	1		
La Madera	H	East Mountains & Sandoval	1	1		
La Mesilla	M	Santa Clara Pueblo	1		1	
La Plata	H	San Juan Basin	1	1		
La Puente*	L(H)	Rio Arriba & Upper Chama	1	1		
La Tierra	L	Santa Fe	1			1
Laguna Vista Estates	H	Upper Chama	1	1		
Lake Roberts	H	Grant County	1	1		
Lake Sumner	H	DeBaca	1	1		
Lakeview Pines	H (L)	Enchanted Circle & Colfax	1	1		
Lama (La Lama)	L (H)	Enchanted Circle & (Taos County)	1	1		
Lamy	M	Santa Fe	1		1	
Las Campanas	L	Santa Fe	1			1
Las Trampas (Trampas)	L (M)	Enchanted Circle & (Taos County)	1		1	
Las Vegas, North and West	H	San Miguel	1	1		
Las Vegas, Southeast	M	San Miguel	1		1	
Latir	H (L)	Enchanted Circle	1	1		
Ledoux	H	Mora County	1	1		
Lemitar	M	Socorro County	1		1	
Lesbia	M	Quay	1		1	
Lincoln	H	Lincoln	1	1		
Linwood	M	Colfax	1		1	
Llano Largo	H	Taos County	1	1		
Llano Quemado	H	Taos County	1	1		
Lobo Canyon (Grants)	M	Cibola County	1		1	
Loco Hills	M	Eddy	1		1	
Logan	H	Quay	1	1		
Loma Grande	H	Ruidoso	1	1		
Loma Prada*	H	Torrance & Claunch-Pinto	1	1		
Los Chavez	H	MRG	1	1		
Los Cordovas	L	Taos County	1			1
Los Luceros	M	Rio Arriba	1		1	
Los Lunas	H	MRG	1	1		
Los Ojos*	L	Rio Arriba & Upper Chama	1			1
Los Pinos	M	East Mountain	1		1	
Los Pinos	L	Santa Fe	1			1
Los Ranchos de Albuquerque	M	MRG	1		1	
Los Vaqueros, Cimarron	M	Santa Fe	1		1	
Loving	L	Eddy	1			1
Lovington	H	Lea	1	1		
Lower Desmontes	L	Taos County	1			1
Lower Pacheco Canyon	M	Santa Fe	1		1	
Lower Pecos Canyon	H	San Miguel	1	1		
LS Mesa	H	Grant County	1	1		
Lumberton	M	Upper Chama	1		1	
Luna	H	Catron County & Luna	1	1		
Lyden	M	Rio Arriba	1		1	
Madrid	L	Santa Fe	1			1
Magdalena	M	Socorro County	1		1	

Mailbox Road	H	Santa Fe	1	1		
Malaga	M	Eddy	1		1	
Maljamar	H	Lea	1	1		
Manzano Land Grant*	H	Torrance & Claunch-Pinto	1	1		
Manzano Morning	H	Torrance	1	1		
Mariano Lake	M	McKinley	1		1	
Maxwell	M	Colfax	1		1	
Mayhill	H	Otero County	1	1		
McAlister	L	Quay	1			1
McGaffey	H	McKinley	1	1		
McIntosh	H	Torrance	1	1		
Melrose	H	Curry	1	1		
Mescalero Apache Reservation	H	Otero County	1	1		
Miami*	M	Colfax & CWA	1		1	
Mierra	M	East Mountain	1		1	
Mil+A161nesand	H	Roosevelt	1	1		
Milagro	H	Guadalupe	1	1		
Milan	L	Cibola County	1			1
Mills Canyon	H	Socorro County	1	1		
Mimbres Valley	H	Grant County	1	1		
Mineral Hill	H	San Miguel	1	1		
Mission Hills	M	Torrance	1		1	
Mogollon	H	Catron County & Mogollon	1	1		
Montezuma	H	San Miguel	1	1		
Montoya	M	Quay	1		1	
Monument	H	Lea	1	1		
Mora	H	Mora County	1	1		
Moriarty	M	Torrance	1		1	
Mosquero	M	Harding	1		1	
Mount Dora	L	Union	1			1
Mountainair*	M	Torrance & Claunch-Pinto	1		1	
Nara Visa	M	Quay	1		1	
Newkirk/Cuervo	L	Guadalupe	1			1
NM Boys School	L	Colfax	1			1
Nogal	H	Lincoln	1	1		
Oak Grove	H	Grant County	1	1		
Ocate	H	Mora County	1	1		
Ojo Caliente	L	Taos County	1			1
Ojo de la Vaca	H	Santa Fe	1	1		
Ojo Feliz	M	Mora County	1		1	
Old Ranch Road	L	Santa Fe	1			1
Old Santa Fe Trail	M	Santa Fe	1		1	
Old Town (Sunyside)	H	DeBaca	1	1		
Otis	L	Eddy	1			1
Pacheco Canyon	M	Santa Fe	1		1	
Pajarito	H	Quay	1	1		
Pastura	M	Guadalupe	1		1	
Pecos / East Pecos	H	San Miguel	1	1		
Pena Blanca*	M	Sandoval and MRG	1		1	
Penasco*	L (M)	Enchanted Circle & (Taos County)	1		1	

Pendaries	H	San Miguel	1	1		
Pep	H	Roosevelt	1	1		
Peralta	H	MRG	1	1		
Philmont Headquarters	M	Colfax	1		1	
Picuris Pueblo	H (NR)	Enchanted Circle & Taos County	1	1		
Pie Town Area*	M	Catron County & Pie Town	1		1	
Pilar	M	Taos County	1		1	
Pine Forest	M	Colfax	1		1	
Pinehaven	H	McKinley	1	1		
Pinon Ridge	H	Upper Chama	1	1		
Pinos Altos	H	Grant County	1	1		
Pintada	M	Guadalupe	1		1	
Placita	L	Taos County	1			1
Placitas	H	Sandoval	1	1		
Plaza Blanca*	L(M)	Rio Arriba & Upper Chama	1		1	
Plaza Largo	H	Quay	1	1		
Ponderosa	H	East Mountain	1	1		
Ponderosa Estates*	H	Rio Arriba & Upper Chama	1	1		
Ponderosa Pines	H	East Mountain	1	1		
Ponderosa, North	H	Sandoval	1	1		
Ponderosa, South	H	Sandoval	1	1		
Portales	L	Roosevelt	1			1
Porter	M	Quay	1		1	
Pot Creek	H (M)	Enchanted Circle & (Taos County)	1	1		
Poverty Creek	M	Sierra County	1		1	
Prewitt	H	McKinley	1	1		
Primera Agua	H	East Mountain	1	1		
Pueblito	H	Socorro County	1	1		
Puerta de Luna	M	Guadalupe	1		1	
Puertocito	M	Sandoval	1		1	
Punta de Agua*	H	Torrance & Claunch-Pinto	1	1		
Quay	L	Quay	1			1
Queen	H	Eddy	1	1		
Quemado Lake Estates	H	Catron County	1	1		
Questa	M(H)	Ench.Circle, Taos Co., Vill. of Questa	1	1		
Rainsville	M	Mora County	1		1	
Ramah	M	McKinley	1		1	
Ranches of Sonterra	H	Ruidoso	1	1		
Rancho Grande Estates	H	Catron County	1	1		
Ranchos De Taos	L	Taos County	1			1
Raton	H	Colfax	1	1		
Rayado	M	Colfax	1		1	
Red Bluff	H	Torrance	1	1		
Red River	M	Enchanted Circle & Taos County	1		1	
Regina	M	Cuba	1	1		
Regina	M (H)	Cuba & Sandoval	1	1		
Reserve	H	Catron County & Reserve	1	1		
Rincon	H	East Mountain	1	1		
Rio Las Vacas	H	Sandoval	1	1		
Rio Lucio	L	Taos County	1			1

Rio Rancho	M	Sandoval and MRG	1		1	
Riverside	M	Eddy	1		1	
Rociada Valleys	H	San Miguel	1	1		
Rodarte	L (M)	Enchanted Circle & (Taos County)	1		1	
Rogers	L	Roosevelt	1			1
Romeroville / Ojitos Frios	H	San Miguel	1	1		
Roy	M	Harding	1		1	
Ruidoso	H	Ruidoso	1	1		
Ruidoso Downs	H	Ruidoso	1	1		
Rutherford	L(M)	Rio Arriba & Upper Chama	1		1	
Sabinal	H	Socorro & MRG	1	1		
Sabinoso	L	San Miguel	1			1
Sacramento	H	Otero County	1	1		
Sagar Estates	M	McKinley	1		1	
San Acacia	H	Socorro County and MRG	1	1		
San Antonio (East Mountain)	H	East Mountain	1	1		
San Antonio (Socorro)	M	Socorro County	1		1	
San Antonito	M	East Mountain	1		1	
San Cristobal	M	Taos County	1		1	
San Felipe Pueblo	M	Sandoval	1		1	
San Ignacio / Las Tusas	H	San Miguel	1	1		
San Jon	H	Quay	1	1		
San Juan Pueblo	H	Rio Arriba	1	1		
San Lorenzo	M	Grant County	1		1	
San Marcos	L	Santa Fe	1			1
San Pedro	H	Santa Fe	1	1		
San Pedro	H	Socorro County	1	1		
San Ysidro	L	Sandoval	1			1
Sandia Knolls	H	East Mountain	1	1		
Sandia Park	H	East Mountain	1	1		
Santa Clara	M	Grant County	1		1	
Santa Clara Pueblo	H	Santa Clara Pueblo	1	1		
Santa Fe South	L	Santa Fe	1			1
Santa Rosa	L	Guadalupe	1			1
Santo Domingo Pueblo	M	Sandoval	1		1	
Sapello / Tierra Monte	H	San Miguel	1	1		
Sedan	L	Union	1			1
Sedillo	M	East Mountain	1		1	
Seven Springs	H	Cuba & Sandoval	1	1		
Shady Brook	H	Enchanted Circle & Taos County	1	1		
Sherwood Forest	H	Torrance	1	1		
Sierra Los Pinos	H	Cuba & Sandoval	1	1		
Sierra Vista (Ruidoso)	H	Ruidoso	1	1		
Sile	M	Sandoval and MRG	1		1	
Silver City	M	Grant County	1		1	
Sixteen Springs	H	Otero County	1	1		
Socorro	M	Socorro County	1		1	
Solano	L	Harding	1			1
Sombrillo, Cuarteles	M	Santa Fe	1		1	
Springer	M	Colfax	1		1	

Stagecoach	L	Taos County	1			1
Strong City	L	Union	1			1
Sugarite	L	Colfax	1			1
Sugarite State Park	H	Colfax	1	1		
Sun Valley	H	Ruidoso	1	1		
Sunlit Hills	L	Santa Fe	1			1
Sunset Acres	M	Torrance	1		1	
Sunshine Valley	L	Enchanted Circle	1			1
Sunspot	H	Otero County	1	1		
Sweetwater Hills Subdivision	M	Torrance	1		1	
Taiban	H	DeBaca	1	1		
Tajique Land Grant	H	Torrance	1	1		
Talpa	M	Taos County	1		1	
Tano Road	H	Santa Fe	1	1		
Taos	L	Enchanted Circle & Taos County	1			1
Taos Pines	H	Colfax	1	1		
Taos Pueblo	H (NR)	Enchanted Circle & (Taos County)	1	1		
Taos Ski Valley	H (M)	Enchanted Circle & (Taos County)	1	1		
Tatum	H	Lea	1	1		
Taylor	H	Sandoval	1	1		
Taylor Springs	M	Colfax	1		1	
Tecolotito	H	San Miguel	1	1		
Terrero	H	San Miguel	1	1		
Tesuque	M	Santa Fe	1		1	
Thomas	L	Union	1			1
Thompson Ridge	H	Cuba & Sandoval	1	1		
Thoreau	M	McKinley	1		1	
Thunder Mountain	M	Santa Fe	1		1	
Tierra Amarilla	L(M)	Rio Arriba & Upper Chama	1		1	
Tijeras	H	East Mountain	1	1		
Timberlake, Box S Ranch	H	McKinley	1	1		
Timberon	H	Otero County	1	1		
Tinaja	L	Colfax	1			1
Tolar	H	Roosevelt	1	1		
Tome	H	MRG	1	1		
Torreón Land Grant	H	Torrance	1	1		
Trampas	L	Enchanted Circle & Taos County	1			1
Trementina / Variadero	M	San Miguel	1		1	
Tres Lagunas	H	San Miguel	1	1		
Tres Orejas	M	Taos County	1		1	
Tres Piedras	M	Taos County	1		1	
Tres Ritos	H	Taos County	1	1		
Trujillo	H	San Miguel	1	1		
Tse-Yah-Tow	H	McKinley	1	1		
Tucumcari	H	Quay	1	1		
Turquoise Estates	M	Curry	1		1	
Turquoise Trail	M	Santa Fe	1		1	
Two Peaks	M	Taos County	1		1	
Upper Desmontes	L	Taos County	1			1
Upper Gallinas	H	San Miguel	1	1		

**Table 3
Community at Risk by County**

2008 Communities at Risk List			
by County			
* listed in another CWPP, RED lettering indicates 2008 cwpp			
County	CWPPs	Community at Risk	Rating
Bernalillo	MRG	Albuquerque	M
	East Mountain	Alley Place	M
		Barton	M
		Canoncito (East Mtn)	H
		Carnuel	M
		Casa Loma	H
		Cedar Crest	H
		Cedro	H
		Dennis Chavez Estates	H
		El Refugio	H
		El Talbazon	H
		Escabosa	M
		Forest Park	H
		Frost Road	M
		Juan Thomas	H
		Los Pinos	M
	MRG	Los Ranchos de Albuquerque	M
		Mierra	M
		Ponderosa	H
		Ponderosa Pines	H
		Primera Agua	H
		Rincon	H
		San Antonio	H
		San Antonito	M
		Sandia Knolls	H
		Sandia Park	H
		Sedillo	M
		Tijeras	H
		Yrisarri	H
		Zamora	M
Catron	Catron County	Aragon	H
		Coyote Creek	M
		Cruzville	M
		Elk Springs	H
		Glenwood	M
		Quemado Lake Estates	H
		Rancho Grande Estates	H
	Apache Creek	Apache Creek*	H(M)
	Datil	Datil*	M(H)
	Davenport	Davenport*	H

	Horse Mountain	Horse Mountain*	M
	Jewett Gap	Jewett Gap*	H
	Luna	Luna*	H
	Mogollon	Mogollon*	H
	Pie Town	Pie Town*	M
	Reserve	Reserve*	H
	Wildhorse	Wildhorse*	M
	Willow Creek	Willow Creek*	H
Chaves			
Cibola	Cibola Couty	Bluewater	M
	Candy Kitchen*	Candy Kitchen*	M(H)
		El Morro	L
		Lobo Canyon (Grants)	M
		Milan	L
Colfax	Colfax County	Abbott	L
		Agua Fria	M
	Enchanted Circle*	Angel Fire*	H
		Bartlett	M
		Black Lake/Black Lake Resort*	H
		Carisbrooke	M
	CWA**	Cimarron**	H
		Colfax	M
	CWA, En. Circle***	Eagle Nest***	L
		Elizabethtown	L
		Elk Ridge	H
		Farley	L
		Gardiner	M
		Hidden Lake	H
		Idlewild*	L(H)
		Lakeview Pines*	L(H)
		Linwood	M
		Maxwell	M
		Miami**	M
		NM Boys School	L
		Philmont Headquarters	M
		Pine Forest	M
		Raton	H
		Rayado	M
		Springer	M
		Sugarite	L
		Sugarite State Park	H
		Taos Pines	H
		Taylor Springs	M
		Tinaja	L
		Ute Park**	H
		Vermejo Park Ranch Headquarters	H
		Whittington Center	M

		Yankee	M
Curry	Curry County	Bellview	M
		Broadview	M
		Clovis (WoodsonWay & Lockwood Dr)	M
		Grady	M
		Melrose	H
		Turquoise Estates	M
DeBaca	DeBaca County	Fort Sumner Village	M
		Lake Sumner	H
		Old Town (Sunyside)	H
		Taiban	H
		Valley	M
		Yeso	H
Dona Ana			
Eddy	Eddy County	Artesia	M
		Atoka	L
		Carlsbad	M
		Carlsbad Caverns	L
		Cottonwood	L
		Happy Valley	L
		Hope	L
		Joel	M
		La Huerta	L
		Loco Hills	M
		Loving	L
		Malaga	M
		Otis	L
		Queen	H
		Riverside	M
		Waste Isolation Pilot Plant	L
		White's City	H
Grant	Grant County	Bayard	M
		Burro Mountain	M
		Hanover	H
		LS Mesa	H
		Lake Roberts	H
		Mimbres Valley	H
		Oak Grove	H
		Pinos Altos	H
		San Lorenzo	M
		Santa Clara	M
		Silver City	M
		White Signal	H
Guadalupe	Guadalupe County	Anton Chico	M

		Colonias	M
		Milagro	H
		Newkirk/Cuervo	L
		Pastura	M
		Pintada	M
		Puerta de Luna	M
		Santa Rosa	L
		Vaughn	L
Harding	Harding County	Mosquero	M
		Roy	M
		Solano	L
Hidalgo			
Lea	Lea County	Eunice	H
		Hobbs	H
		Jal	H
		Knowles	H
		Lovington	H
		Maljamar	H
		Monument	H
		Tatum	H
Lincoln County	Lincoln County	Alto	H
		Angus*	H
	Ruidoso*	Ancho	H
		Arabela	H
		Bonito	H
		Capitan	L
		Carrizo Canyon*	H
		Carrizozo	L
		Cedar Creek*	H
	C-P, Torrance**	Corona**	M
		Eagle Creek*	H
		Fort Stanton	L
		Gavilan Canyon*	H
		Glencoe	H
		Hondo / Tinnie	M
		Loma Grande*	H
		Lincoln	H
		Nogal	H
		Ranches of Sonterra*	H
		Ruidoso*	H
		Ruidoso Downs*	H
		Sierra Vista (Ruidoso)*	H
		Sun Valley*	H
		Villa Madonna*	H
		White Oaks	H

Los Alamos			
Luna			
McKinley	McKinley County	Black Rock	H
		Bluewater Lake	H
		Chi-Chi-Tah	H
		Church Rock	M
		Cousins	H
		Crestview, Twin Buttes, Crested Butte	M
		Crownpoint	M
		Fort Wingate	M
		Gallup, Juniper Hills	M
		Gamercio	M
		Iyanbito	M
		Mariano Lake	M
		McGaffey	H
		Pinehaven	H
		Prewitt	H
		Ramah	M
		Sagar Estates	M
		Thoreau	M
		Timberlake, Box S Ranch	H
		Tse-Yah-Tow	H
		Whispering Cedars	H
		Yah-Tah-Hey	M
		Zuni	M
Mora	Mora County	Chacon	H
		Cleveland	H
		Gascon	H
		Guadalupita	H
		Holman	H
		La Cueva (Mora)	M
		Ledoux	H
		Mora	H
		Ocate	H
		Ojo Feliz	M
		Rainsville	M
Otero	Otero County	Bent	M
		Cloudcroft	H
		Cox Canyon	H
		Dry Canyon	H
		High Rolls	H
		James Canyon	H
		Mayhill	H
		Mescalero Apache Reservation	H
		Sacramento	H
		Sixteen Springs	H

		Sunspot	H
		Timberon	H
		Weed	H
Quay	Quay County	Bard	L
		Endee	L
		Endee Truckstop	M
		Forrest	L
		Glenrio	L
		House	H
		Ima	L
		Jordan	L
		Lesbia	M
		Logan	H
		McAlister	L
		Montoya	M
		Nara Visa	M
		Pajarito	H
		Plaza Largo	H
		Porter	M
		Quay	L
		San Jon	H
		Tucumcari	H
		Ute Lake Ranch	M
		Ute Lake State Park	L
Rio Arriba County	Rio Arriba County	Alcalde	M
	Upper Chama*	Biggs*	H
		Brazos	M
		Brazos Canyon*	H
		Buckman Road*	H
		Canones	M
		Canjilon*	H
		Cebolla*	M
		Chama*	L
		Chama West*	M
		Chamita	M
		Chili	M
		Cumbres & Toltec Scenic Railroad*	H
		Diamante*	H
		Embudo	L
		Ensenada*	L(M)
	Santa Clara Pueblo**	Espanola**	M
		Fairview	M
		Fort Heron*	H
		Hernandez	H
		Laguna Vista Estates*	H
		La Mesilla**	M
		La Puente*	L(H)
		Los Luceros	M

		Los Ojos*	L
		Lumberton*	M
		Lyden	M
		Pinon Ridge*	H
		Plaza Blanca*	L(M)
		Ponderosa Estates*	H
		Rutherford*	L(M)
		San Juan Pueblo	H
		Santa Clara Pueblo**	H
		Tierra Amarilla*	L(M)
		Verlarde	L
Roosevelt	Roosevelt County	Arch	L
		Causey	L
		Dora	H
		Elida	H
		Floyd	H
		Kenna	H
		Milnesand	H
		Pep	H
		Portales	L
		Rogers	L
		Tolar	H
San Juan	San Juan Basin	Aztec	H
		Blanco	H
		Bloomfield	H
		Farmington	H
		La Plata	H
San Miguel	San Miguel County	Bernal / Tecolote / Lagunita	H
		Bull Creek	H
		Colonias, Upper / Lower	H
		Conchas Lake	M
		Cowles	H
		Dalton Canyon	H
		El Porvenir	H
		Gallinas	H
		Gonzales Ranch	H
		Grass Mountain	H
		Hidden Valley	H
		Highway 84	H
		Las Vegas, North and West	H
		Las Vegas, Southeast	M
		Lower Pecos Canyon	H
		Mineral Hill	H
		Montezuma	H
		Pecos / East Pecos	H
		Pendaries	H
		Rociada Valleys	H

		Romeroville / Ojitos Frios	H
		Sabinoso	L
		San Ignacio / Las Tusas	H
		Sapello / Tierra Monte	H
		Tecolotito	H
		Terrero	H
		Trementina / Variadero	M
		Tres Lagunas	H
		Trujillo	H
		Upper Gallinas	H
		Villaneauva/Pecos River Valley	H
		Windsor Creek / Holy Ghost	H
Sandoval	Sandoval County	126 Corridor (7 Springs to Deer Lake)	M
		485 Corridor (Gilman, Canones)	H
	MRG*	Algodones*	M(H)
		Angostura	M
		Areas 1,2,3 (Jemez Springs)	H
		Bernalillo*	M
		Budaghers	M
		Canada	H
		Canon	H
	Cuba**	Chaparral Girl Scout Ranch**	H
		Cochiti Lake	M
		Cochiti Pueblo	M
		Corrales*	M(H)
		Cuba**	M
		Deer Lake**	H
		Evegreen Hills	H
		Jemez Pueblo	M
		Jemez Springs	H
		La Cueva	H
		La Jara**	M
	East Mountains***	La Madera***	H
		Pena Blanca*	M
		Placitas	H
		Ponderosa, North	H
		Ponderosa, South	H
		Puertocito	M
		Regina**	M(H)
		Rio Las Vacas	H
		Rio Rancho*	M
		San Felipe Pueblo	M
		San Ysidro	L
		Santo Domingo Pueblo	M
		Seven Springs**	H
		Sierra Los Pinos**	H
		Sile*	M
		Taylor	H
		Thompons Ridge**	H

		Valle Grande	M
		Zia Pueblo	M
Santa Fe	Santa Fe County	Apache Ridge	H
		Arroyo Hondo	L
		Bella Vista	M
		Bishop's Lodge	M
		Camel Tracks	L
		Canada de los Alamos	M
		Canoncito	M
		Cedar Grove	H
		Cerrillos	M
		Chimayo	L
		Chupadero	M
		Cordova	L
		Cundiyo	M
		Gan Eden	L
		Glorieta Conference Center	M
		Glorieta Estates	M
		Glorieta Mesa	H
		Hyde Park	H
		La Barberia	H
		La Cienega	L
		La Cueva Canyon	M
		La Jolla	M
		La Tierra	L
		Lamy	M
		Las Campanas	L
		Los Pinos	L
		Los Vaqueros, Cimarron	M
		Lower Pacheco Canyon	M
		Madrid	L
		Mailbox Road	H
		Ojo de la Vaca	H
		Old Ranch Road	L
		Old Santa Fe Trail	M
		Pacheco Canyon	M
		San Marcos	L
		San Pedro	H
		Santa Fe South	L
		Sombrillo, Cuarteles	M
		Sunlit Hills	L
		Tano Road	H
		Tesuque	M
		Thunder Mountain	M
		Turquoise Trail	M
Sierra	Sierra County	Chloride	H
		Hillsboro	M
		Kingston	M

		Poverty Creek	M
		Winston	H
Socorro	Socorro County	Abeytas*	H
	MRG*	Bernardo*	M(H)
		Bosquecito	H
		Hop Canyon	H
		Jarales (Socorro)*	H
		Lemitar	M
		La Joya*	H
		Magdalena	M
		Mills Canyon	H
		Pueblito	H
		Sabinal*	H
		San Acacia*	H
		San Antonio	M
		San Pedro	H
		Socorro	M
		Veguita*	H
		Water Canyon	M
Taos	Taos County	Amalia*	M
	Enchanted Circle*	Arroyo Hondo*	M
		Arroyo Seco*	M
		Angostura	H
		Canon	L
		Carson	M
		Cerro*	L
		Chamisal*	M
		Costilla*	M
		El Padro*	L
		El Salto	H
		El Valle	M
		Gallina Canyon	H
		Kiowa Village	H
		Lama ~(La Lama)*	H (L)
		Llano Largo	H
		Llano Quemado	H
		Las Trampas ~(Trampas)*	M (L)
		Latir*	M (H)
		Los Cordovas	L
		Lower Desmontes	L
		Ojo Caliente	L
		Penasco*	M (L)
		Picuris Pueblo*	H
		Pilar	M
		Placita	L
		Pot Creek*	M (H)
	En. Circle, Questa**	Questa**	M (H)**
		Ranchos de Taos	L

		Red River*	M
		Rio Lucio	L
		Rodarte*	M (L)
		San Cristobal	M
		Shady Brook*	H
		Stagecoach	L
		Sunshine Valley*	L
		Talpa	M
		Taos*	L
		Taos Pueblo*	H
		Taos Ski Valley*	M (H)
		Tres Orejas	M
		Tres Piedras	M
		Tres Ritos	H
		Two Peaks	M
		Upper Desmontes	L
		Upper Red River Valley	H
		Vadito*	M
		Valdez	H
		Valle Econdido*	M (H)
		Vallecitos	M
		Ventero	L
		Wiemer Heights	M
Torrance	Torrance County	A102	H
	East Mountain***	Chilili Land Grant***	H
		Clines Corners	M
	C-P, Lincoln**	Corona**	H
	Claunch-Pinto*	Deer Canyon Preserve*	H
		Duran	H
		Echo Hills	H
		Encino	M
		Estancia	M
		Forest Road 422 *	H
		Forest Valley	H
		Fourth of July Campground	H
		Game Road	H
		Homestead Estates	L
		Loma Prada*	H
		Manzano Land Grant*	H
		Manzano Morning	H
		McIntosh	H
		Mission Hills	M
		Moriarty	M
		Mountainair*	M
		Punta de Agua*	H
		Red Bluff	H
		Sherwood Forest	H
		Sunset Acres	M
		Sweetwater Hills Subdivision	M

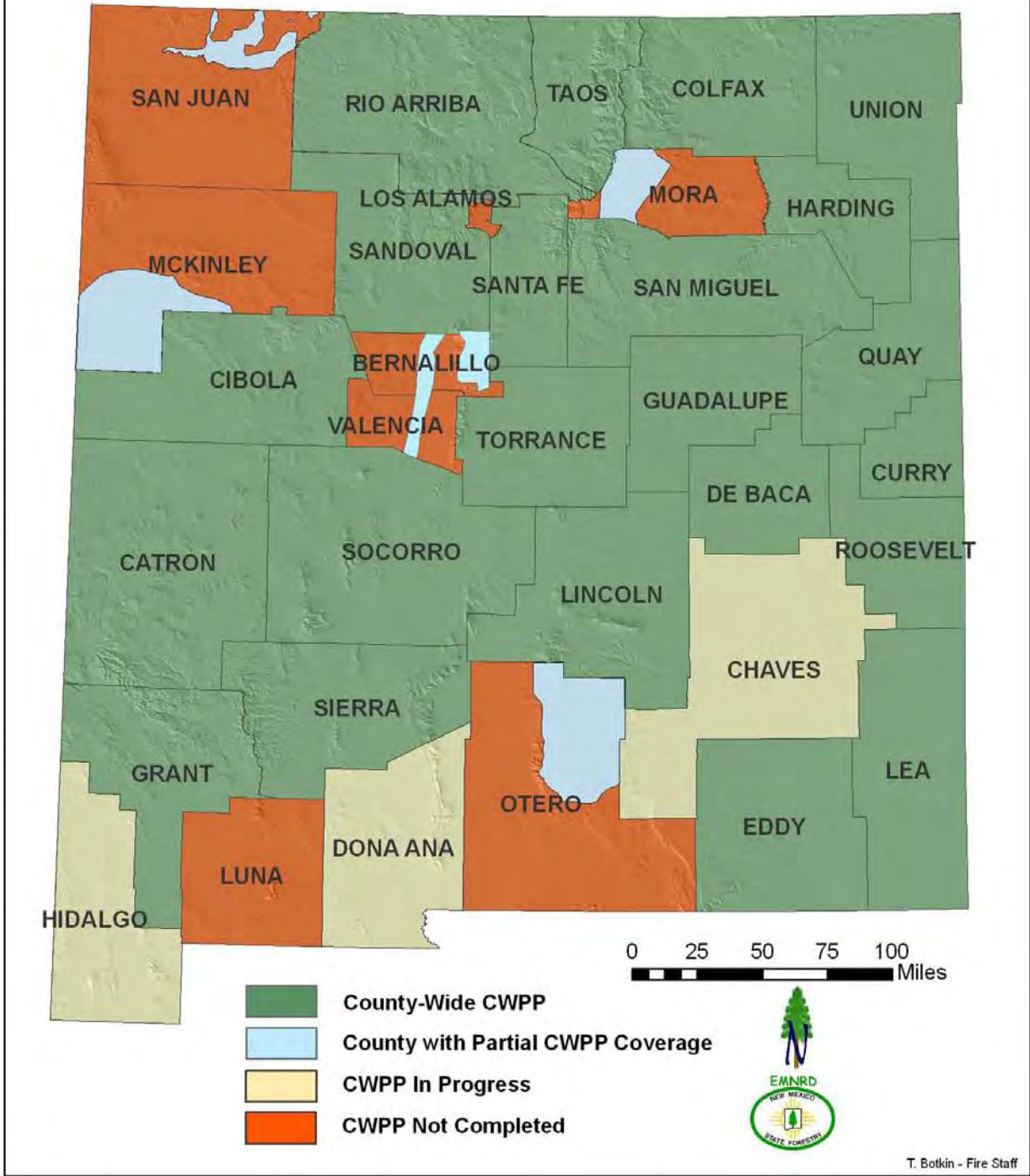
		Tajique Land Grant	H
		Torreon Land Grant	H
		Willard	H
Union	Union County	Amistad	L
		Capulin	M
		Clayton	L
		Des Moines	L
		Folsom	M
		Gladstone	L
		Grenville	L
		Hayden	L
		Mount Dora	L
		Sedan	L
		Strong City	L
		Thomas	L
Valencia	MRG Bosque plan	Belen	H
		Bosque Farms	H
		Jarales	H
		Los Chavez	H
		Los Lunas	H
		Peralta	H
		Tome	H
		Valencia	M

Table 4
Communities not listed in a CWPP

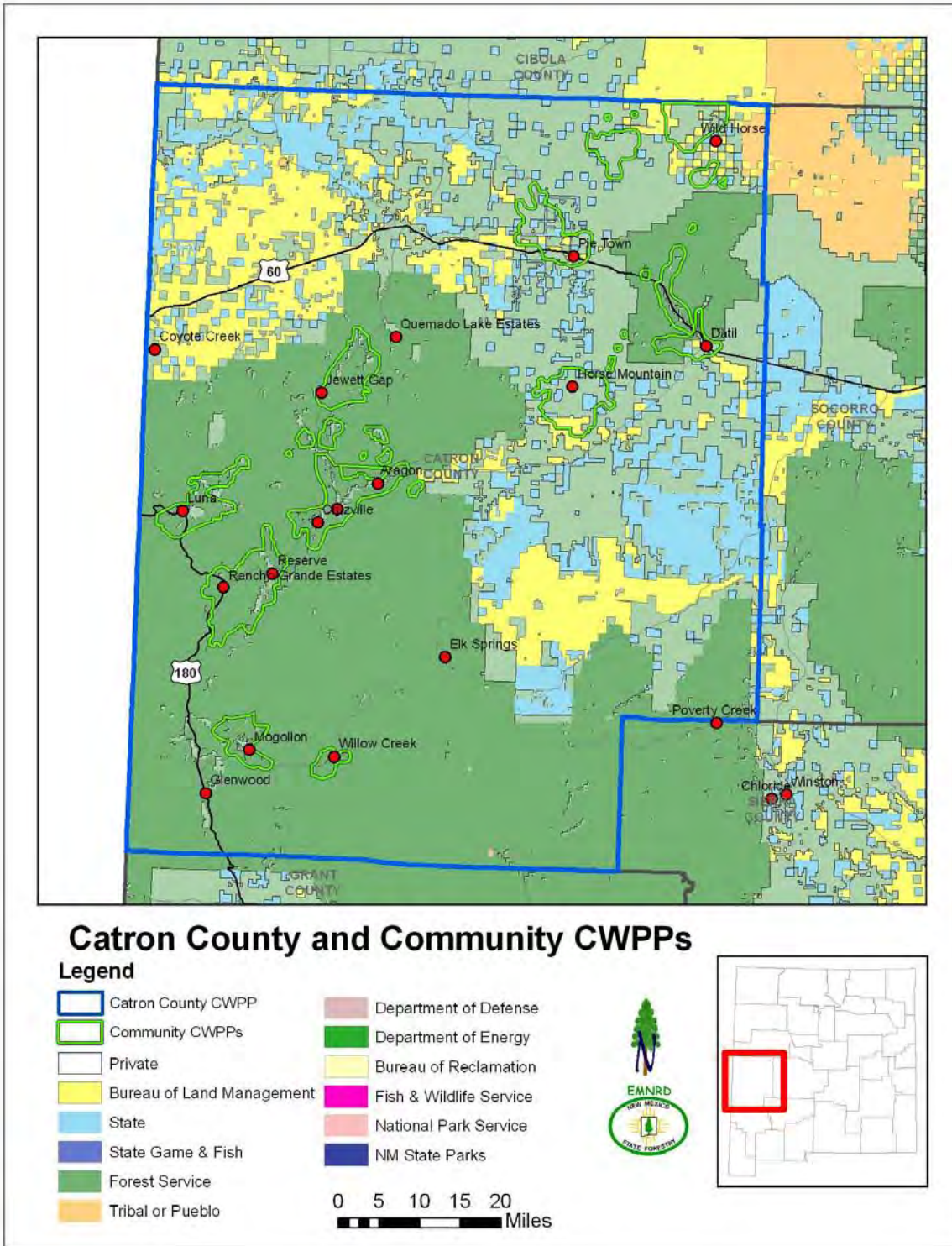
2008 Communities at Risk		
not listed in a CWPP		
County	Community	Risk Rating
Bernalillo	Isleta Pueblo	H
Los Alamos	Los Alamos	M
	White Rock	M
Sandoval	Fenton Lake State Park	H
	Sandia Pueblo	H
	Santa Ana Pueblo	H
Santa Fe	La Puebla	M
	Nambe	M
	Nambe Pueblo	M
	Pojoaque	L
	Tesuque Pueblo	H

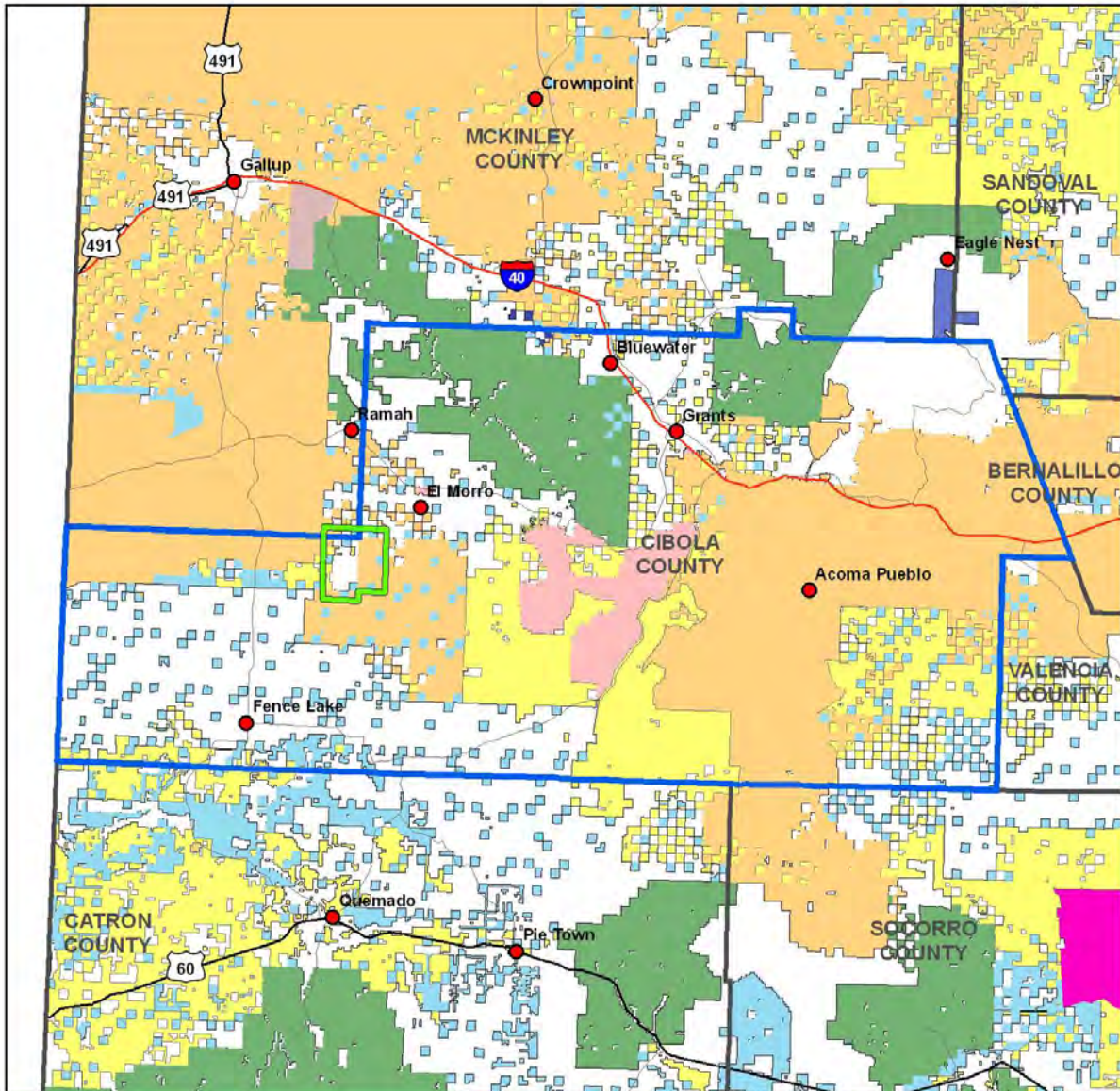
APPENDIX 1

New Mexico CWPP Coverage



APPENDIX 2

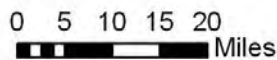


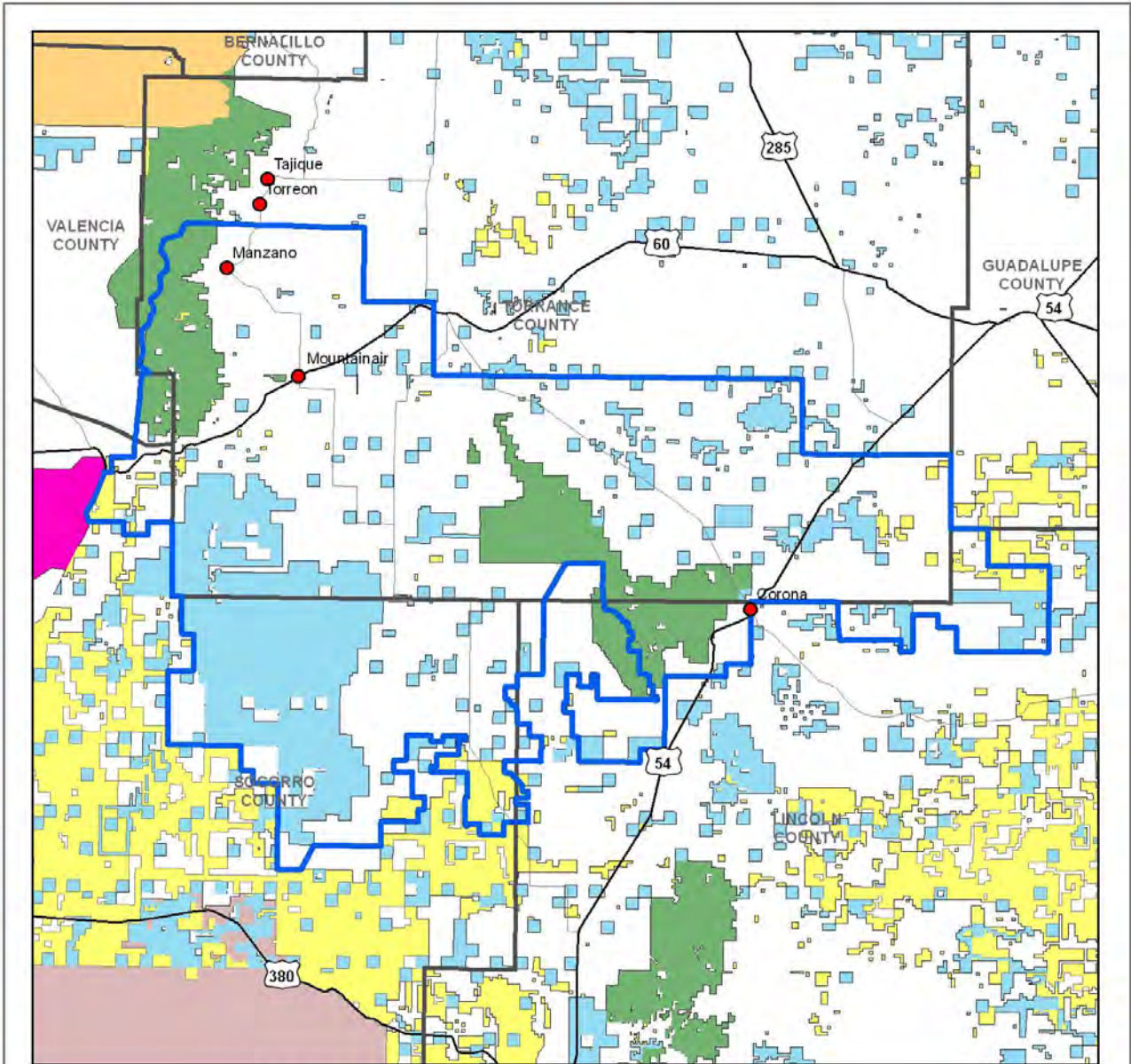


Cibola County CWPP

Legend

- | | |
|---|---|
|  Candy Kitchen CWPP |  Tribal or Pueblo |
|  Cibola County CWPP |  Department of Defense |
|  Private |  Department of Energy |
|  Bureau of Land Management |  Bureau of Reclamation |
|  State |  Fish & Wildlife Service |
|  State Game & Fish |  National Park Service |
|  Forest Service |  NM State Parks |

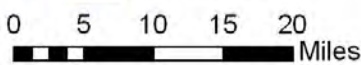


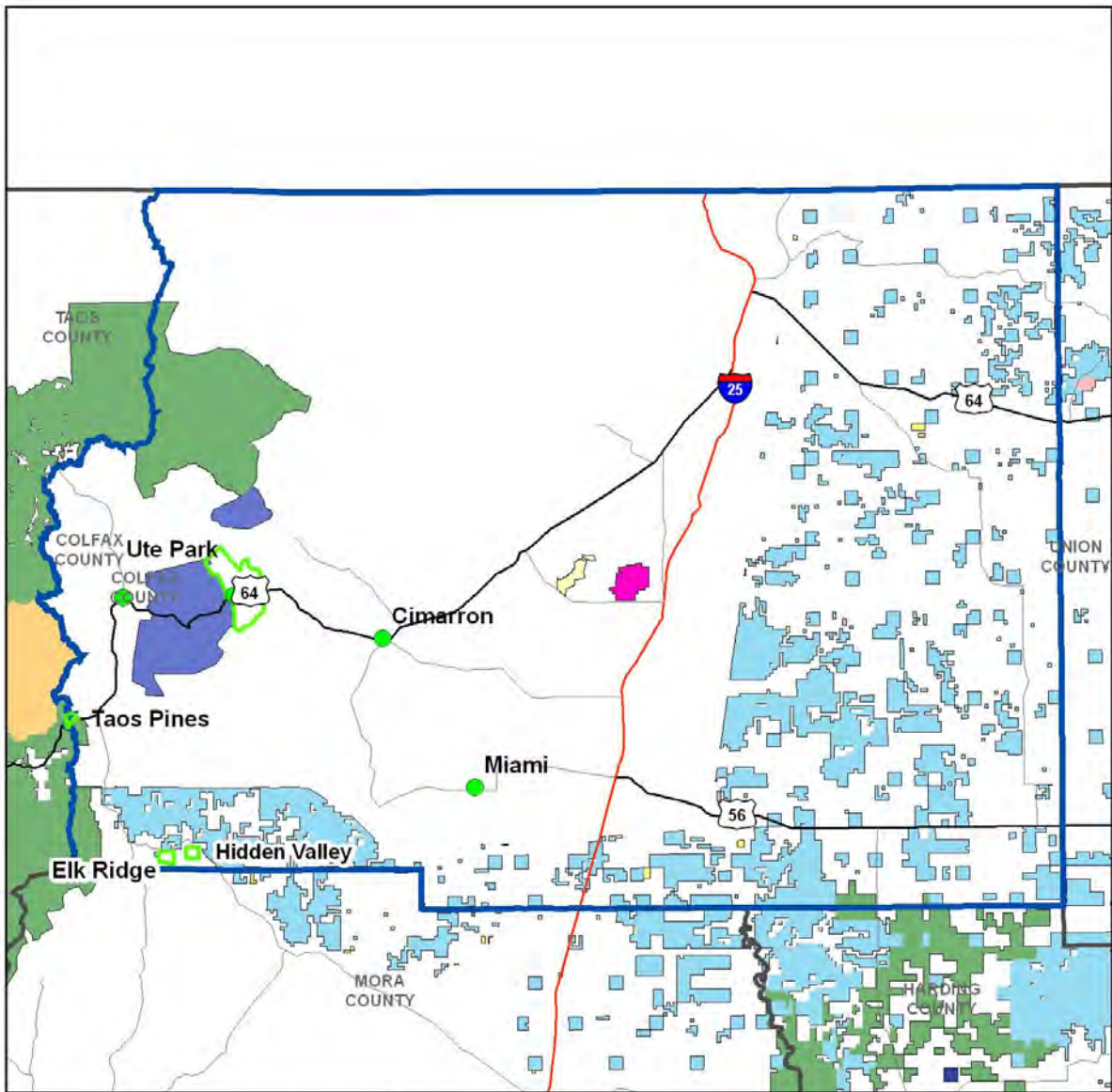


Claunch Pinto CWPP

Legend

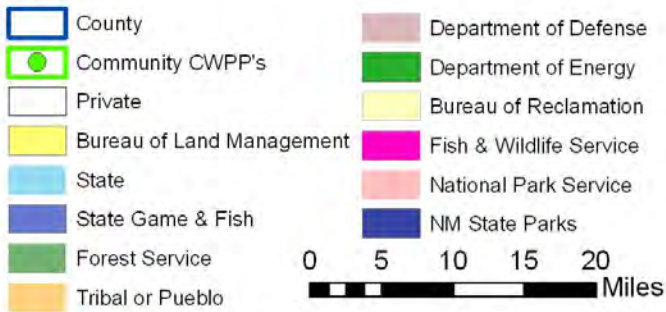
- | | |
|---------------------------|-------------------------|
| Claunch-Pinto CWPP | Department of Defense |
| Private | Department of Energy |
| Bureau of Land Management | Bureau of Reclamation |
| State | Fish & Wildlife Service |
| State Game & Fish | National Park Service |
| Forest Service | NM State Parks |
| Tribal or Pueblo | |

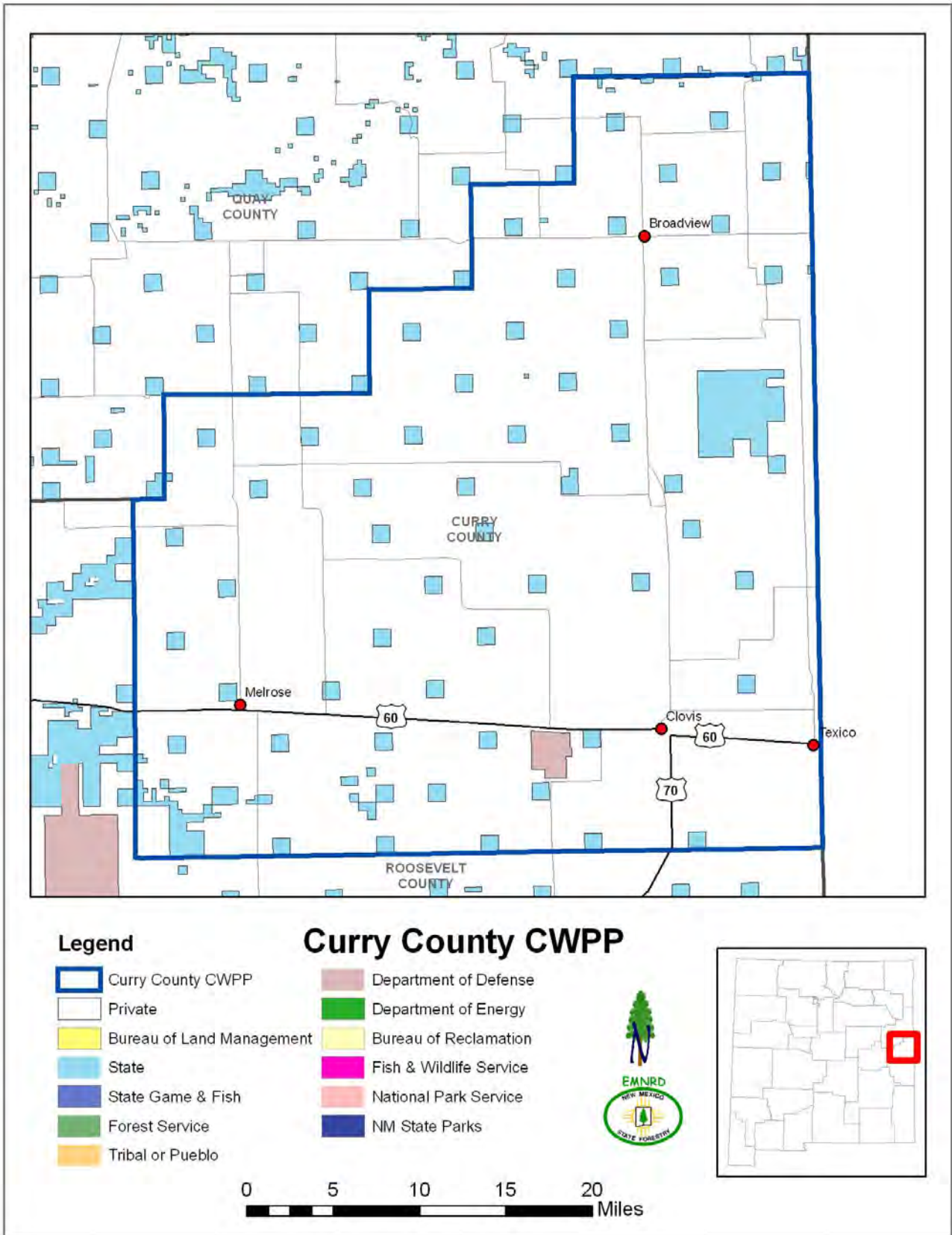


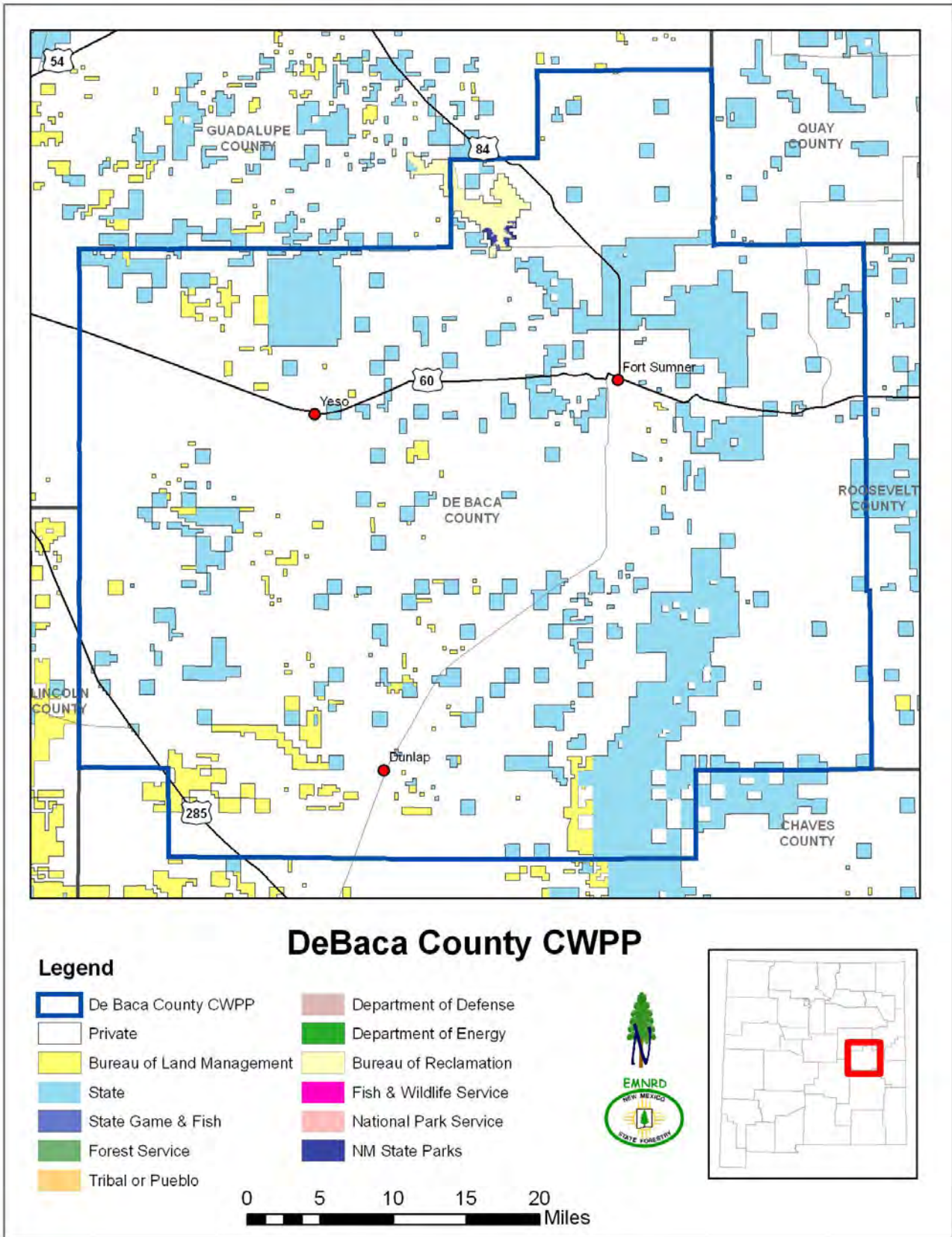


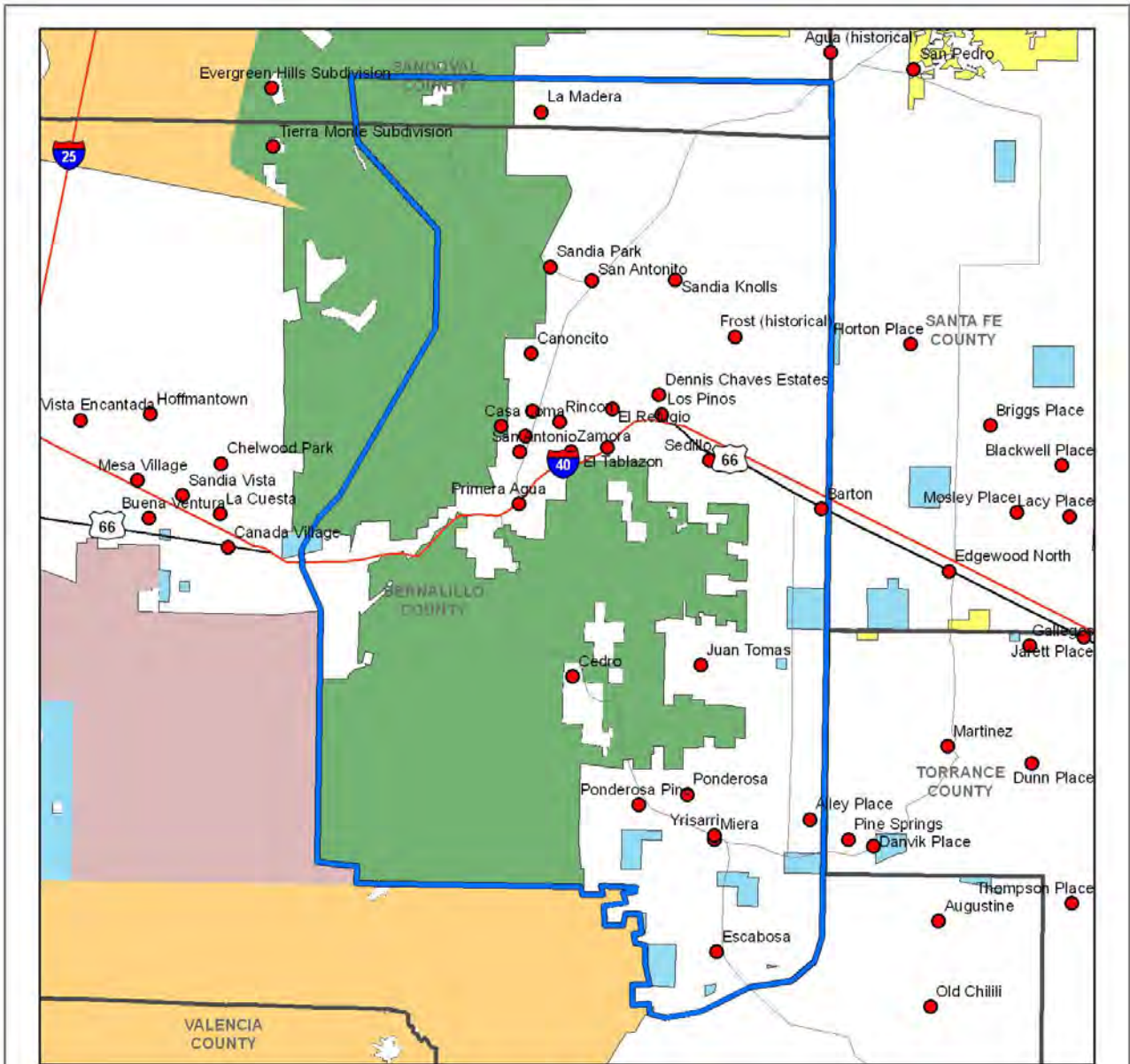
Colfax County and Community CWPP's

Legend





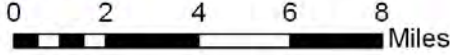


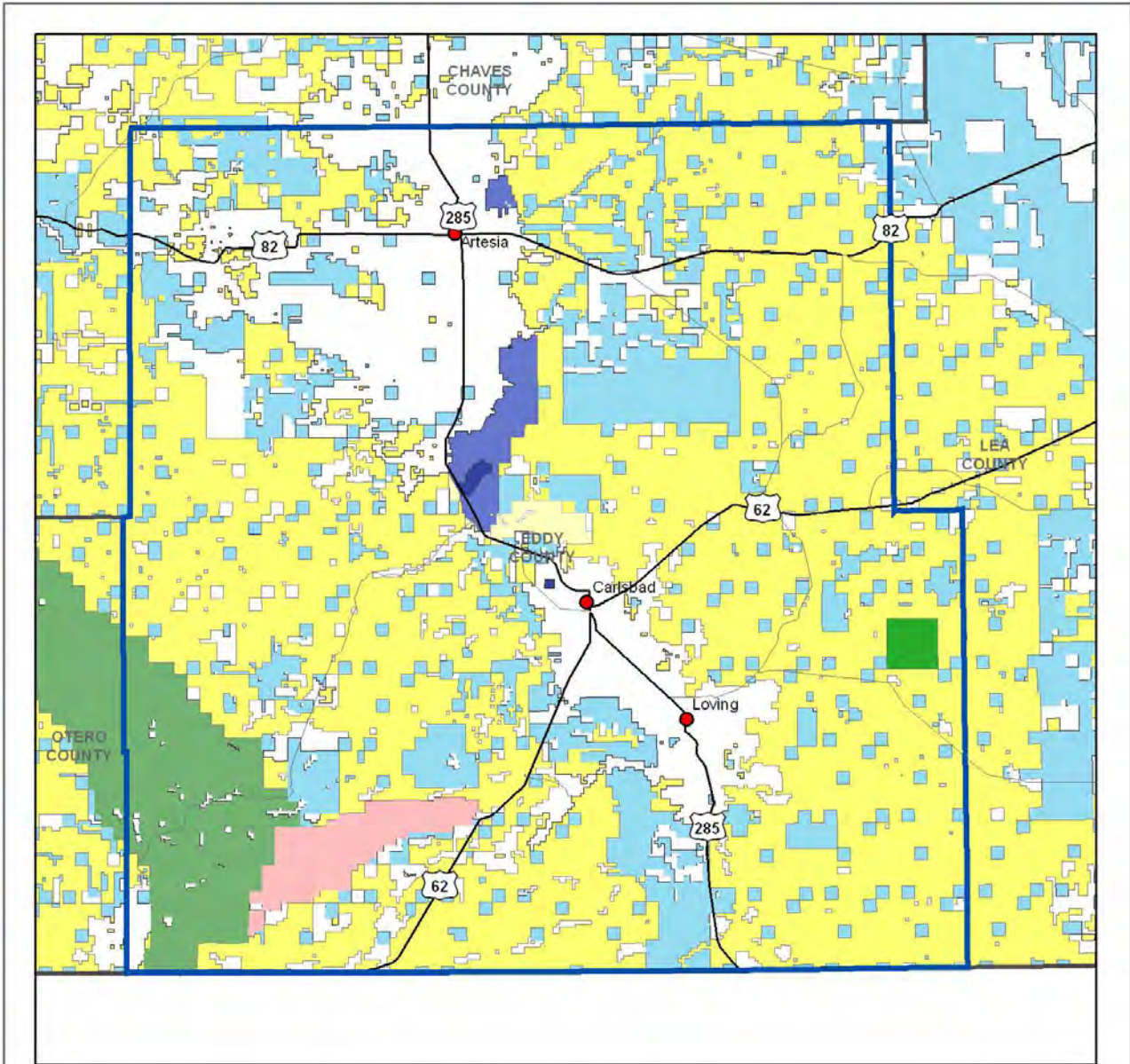


East Mountain CWPP

Legend

- East Mountain CWPP
- Private
- Bureau of Land Management
- State
- State Game & Fish
- Forest Service
- Tribal or Pueblo
- Department of Defense
- Department of Energy
- Bureau of Reclamation
- Fish & Wildlife Service
- National Park Service
- NM State Parks

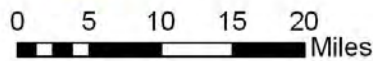


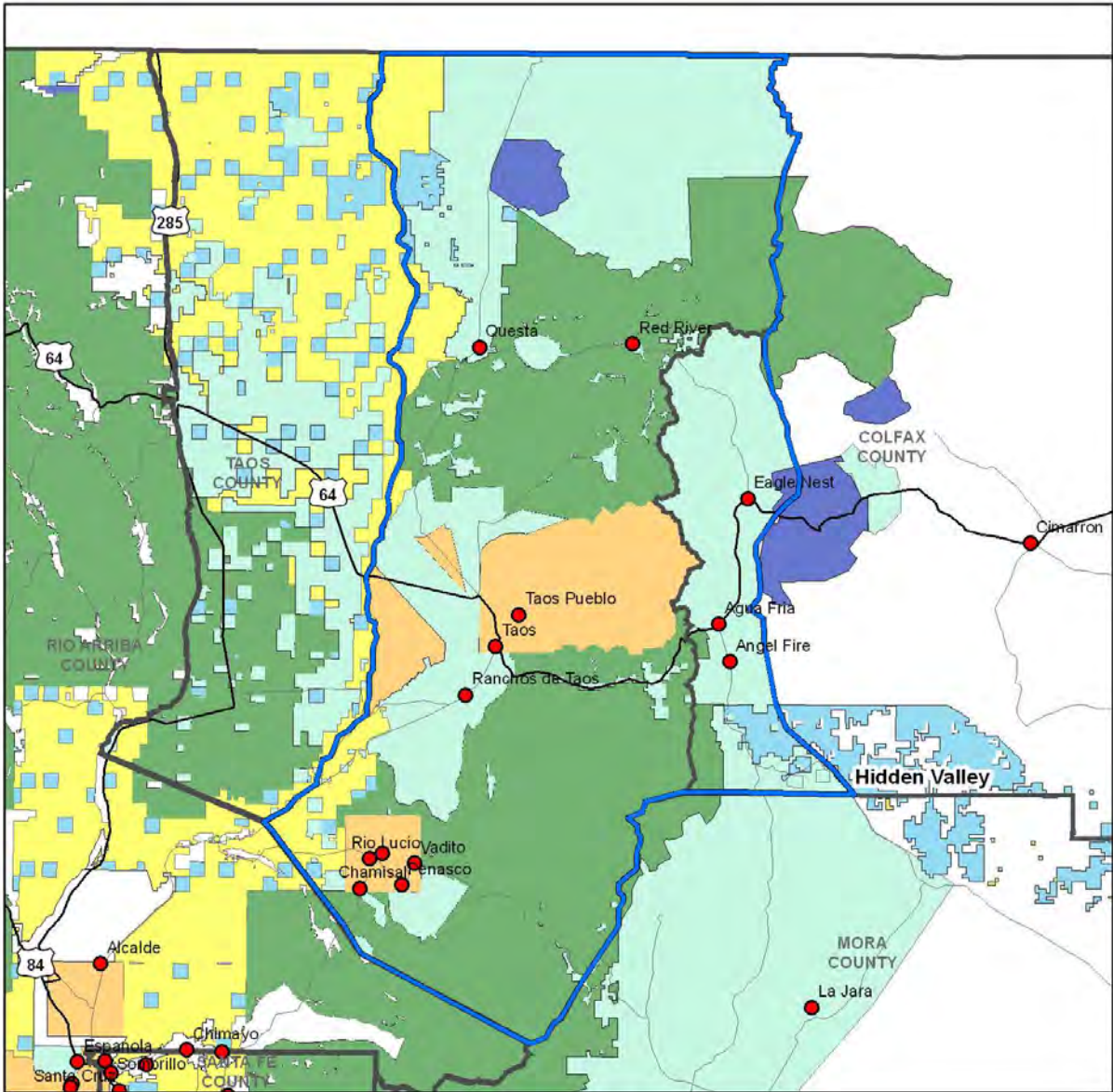


Eddy County CWPP

Legend

- | | |
|---------------------------|-------------------------|
| Eddy County CWPP | Department of Defense |
| Private | Department of Energy |
| Bureau of Land Management | Bureau of Reclamation |
| State | Fish & Wildlife Service |
| State Game & Fish | National Park Service |
| Forest Service | NM State Parks |
| Tribal or Pueblo | |

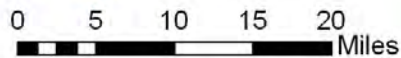


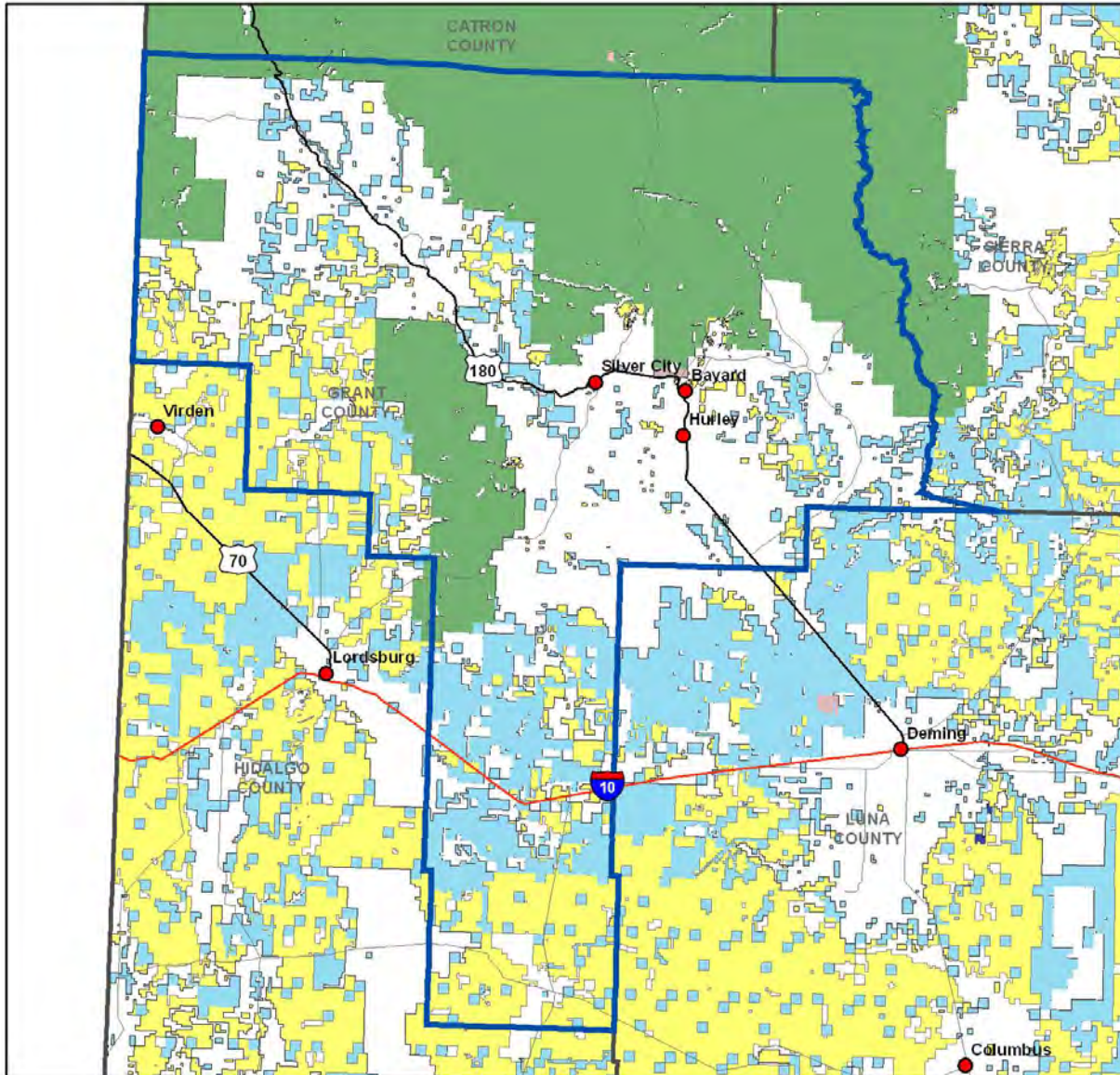


Enchanted Circle CWPP

Legend

- | | |
|---------------------------|-------------------------|
| Enchanted Circle CWPP | Department of Defense |
| Private | Department of Energy |
| Bureau of Land Management | Bureau of Reclamation |
| State | Fish & Wildlife Service |
| State Game & Fish | National Park Service |
| Forest Service | NM State Parks |
| Tribal or Pueblo | |

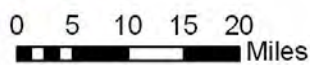


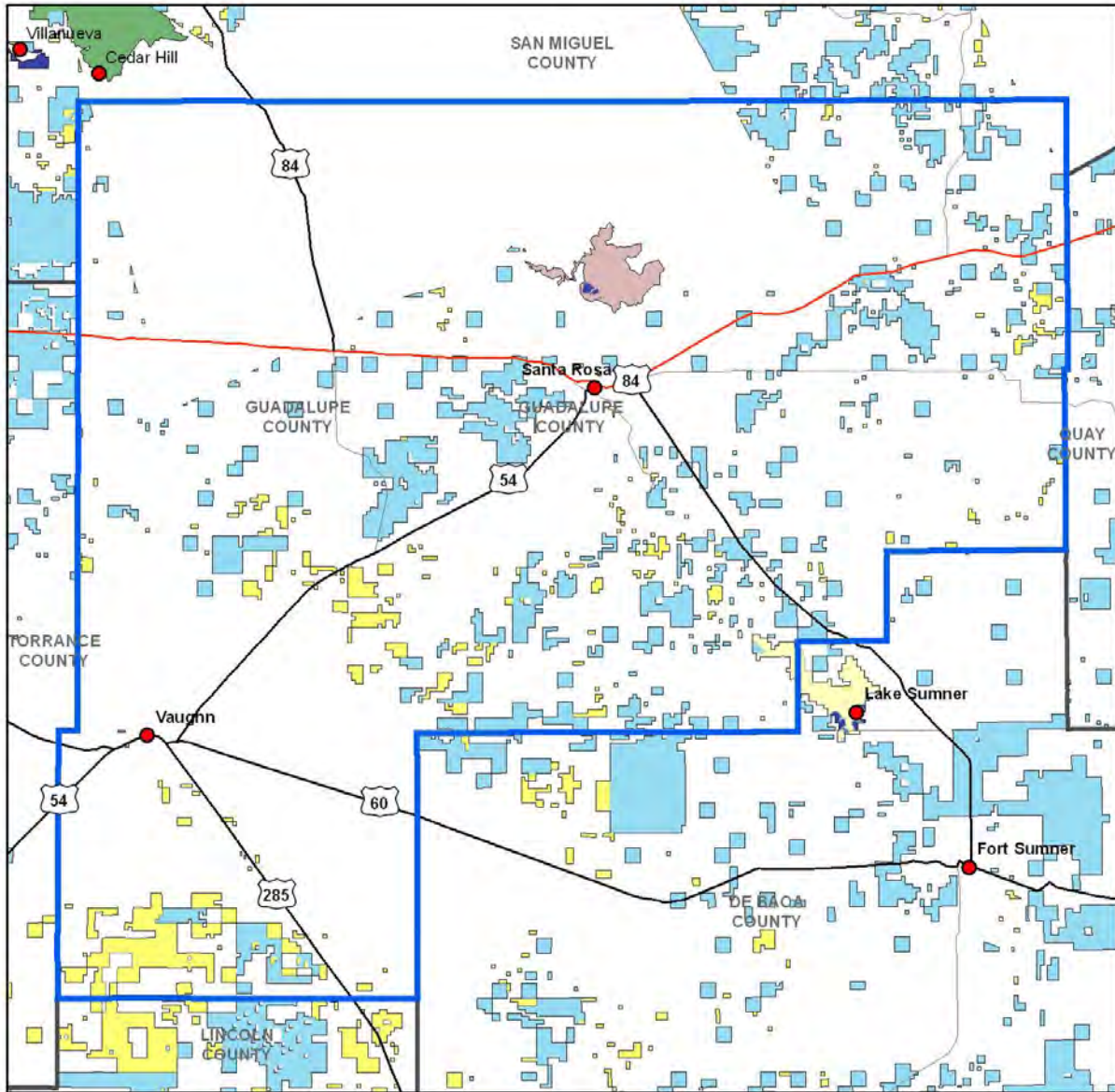


Grant County CWPP

Legend

- | | |
|---------------------------|-------------------------|
| Grant County CWPP | Department of Defense |
| Private | Department of Energy |
| Bureau of Land Management | Bureau of Reclamation |
| State | Fish & Wildlife Service |
| State Game & Fish | National Park Service |
| Forest Service | NM State Parks |
| Tribal or Pueblo | |

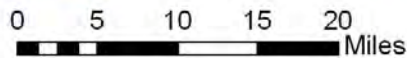


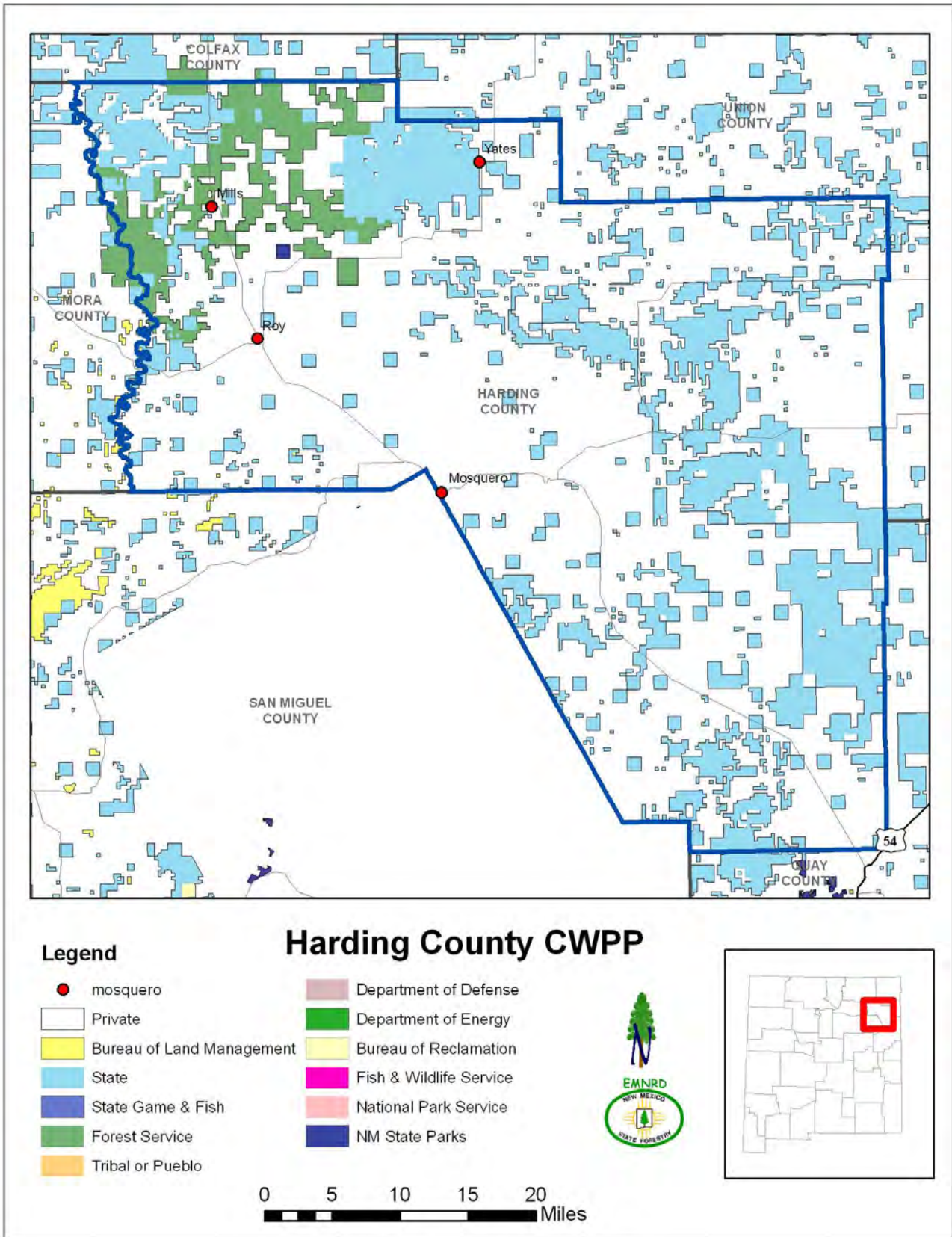


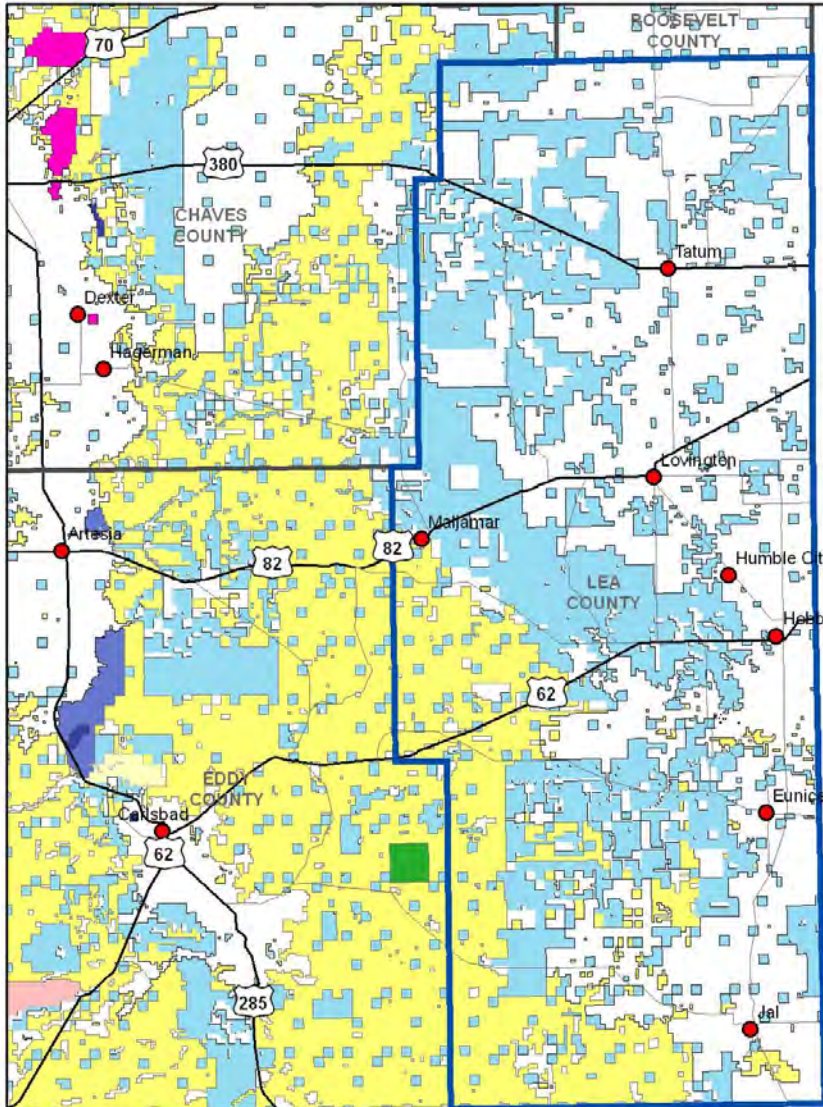
Guadalupe County CWPP

Legend

- | | |
|---------------------------|-------------------------|
| Guadalupe County CWPP | Department of Defense |
| Private | Department of Energy |
| Bureau of Land Management | Bureau of Reclamation |
| State | Fish & Wildlife Service |
| State Game & Fish | National Park Service |
| Forest Service | NM State Parks |
| Tribal or Pueblo | |








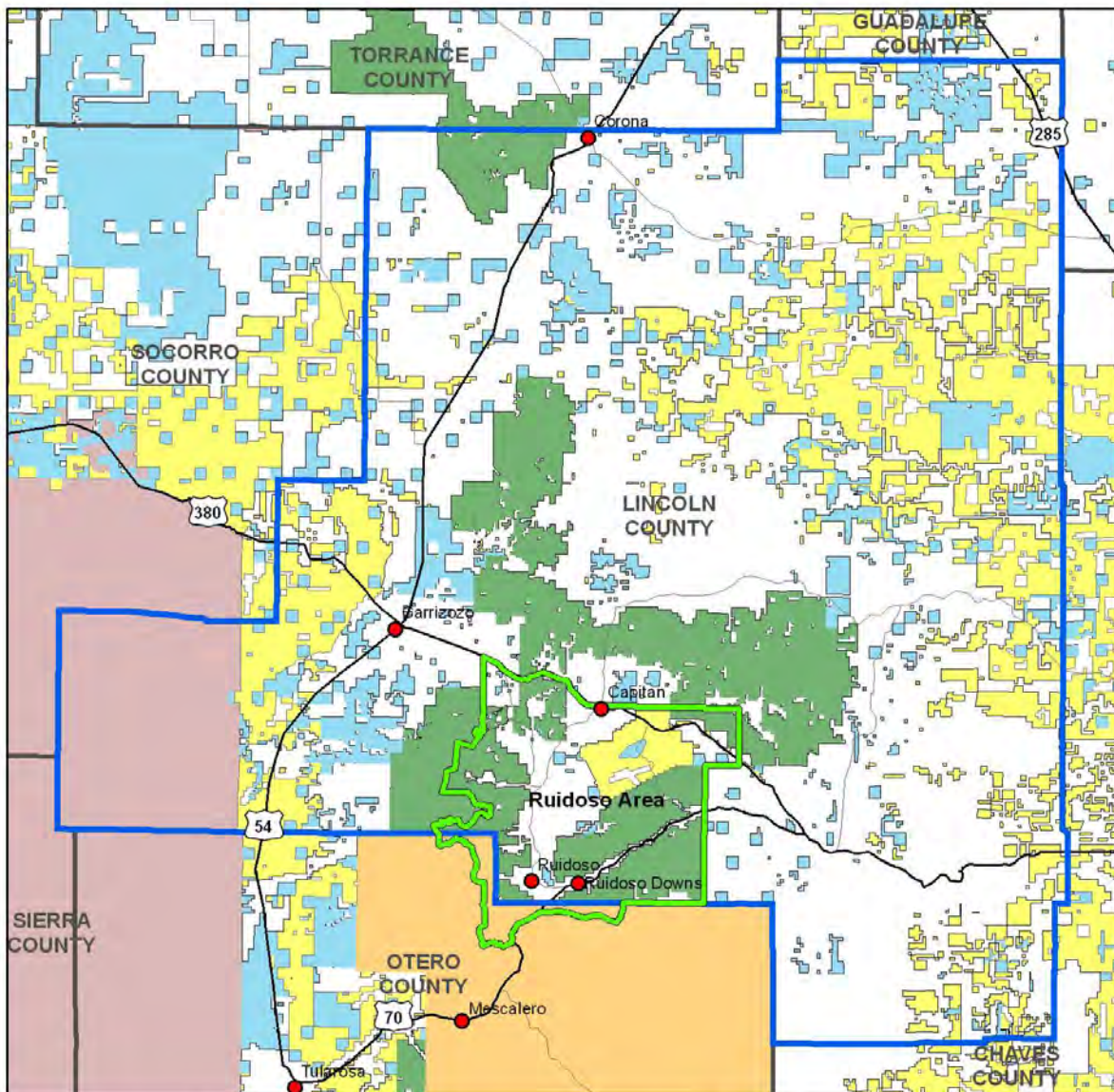
Lea County CWPP

Legend

- | | |
|---|---|
|  Lea County CWPP |  Department of Defense |
|  Private |  Department of Energy |
|  Bureau of Land Management |  Bureau of Reclamation |
|  State |  Fish & Wildlife Service |
|  State Game & Fish |  National Park Service |
|  Forest Service |  NM State Parks |
|  Tribal or Pueblo | |

0 5 10 15 20
 Miles



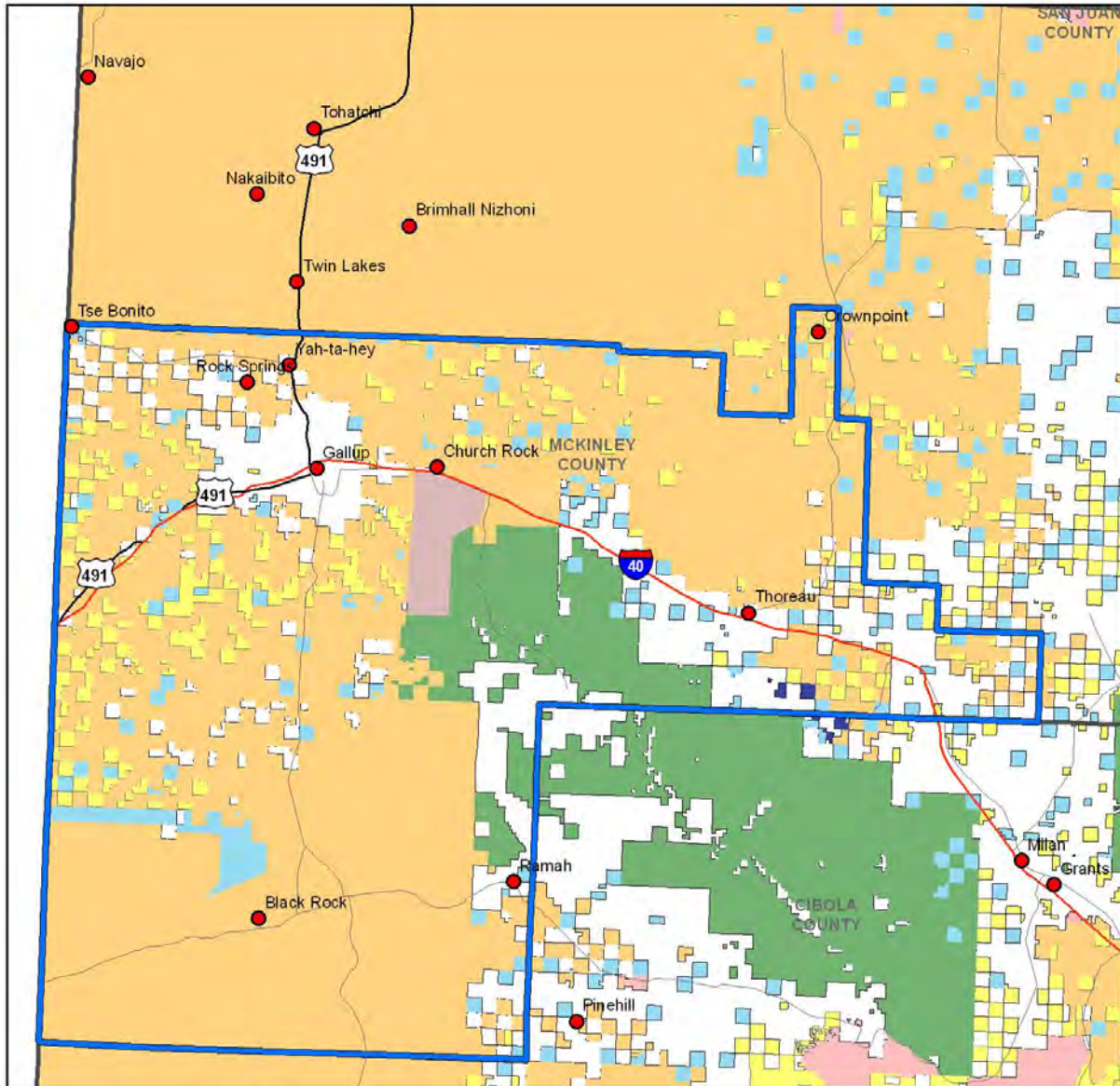


Lincoln County and Community CWPP's Legend

- | | |
|---------------------------|-------------------------|
| Ruidoso Area CWPP | Tribal or Pueblo |
| Lincoln County CWPP | Department of Defense |
| Private | Department of Energy |
| Bureau of Land Management | Bureau of Reclamation |
| State | Fish & Wildlife Service |
| State Game & Fish | National Park Service |
| Forest Service | NM State Parks |

0 5 10 15 20
Miles

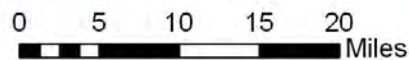


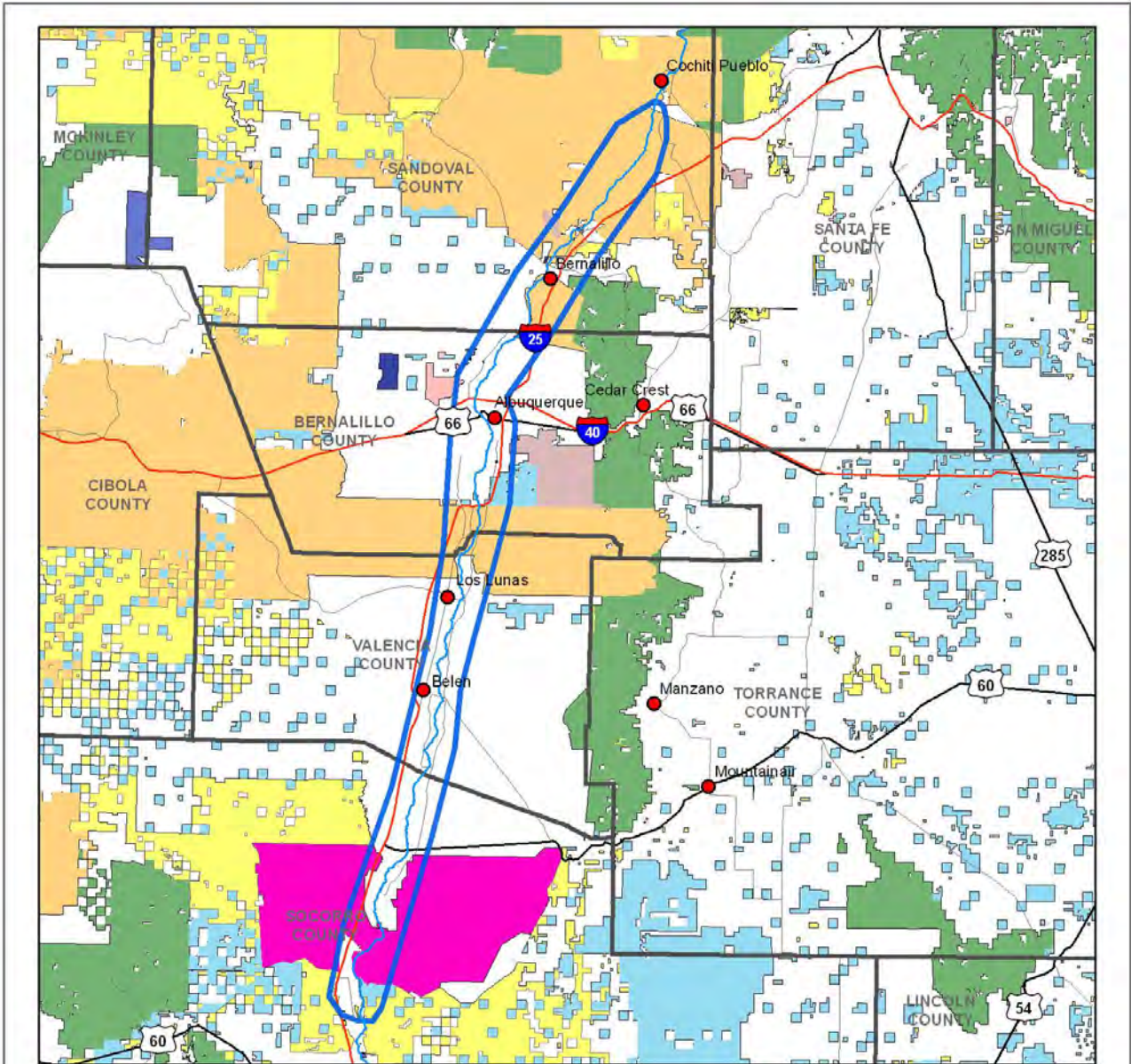


McKinley County CWPP (partial county)

Legend

- | | |
|---------------------------|-------------------------|
| McKinley County CWPP | Department of Defense |
| Private | Department of Energy |
| Bureau of Land Management | Bureau of Reclamation |
| State | Fish & Wildlife Service |
| State Game & Fish | National Park Service |
| Forest Service | NM State Parks |
| Tribal or Pueblo | |

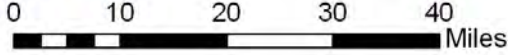


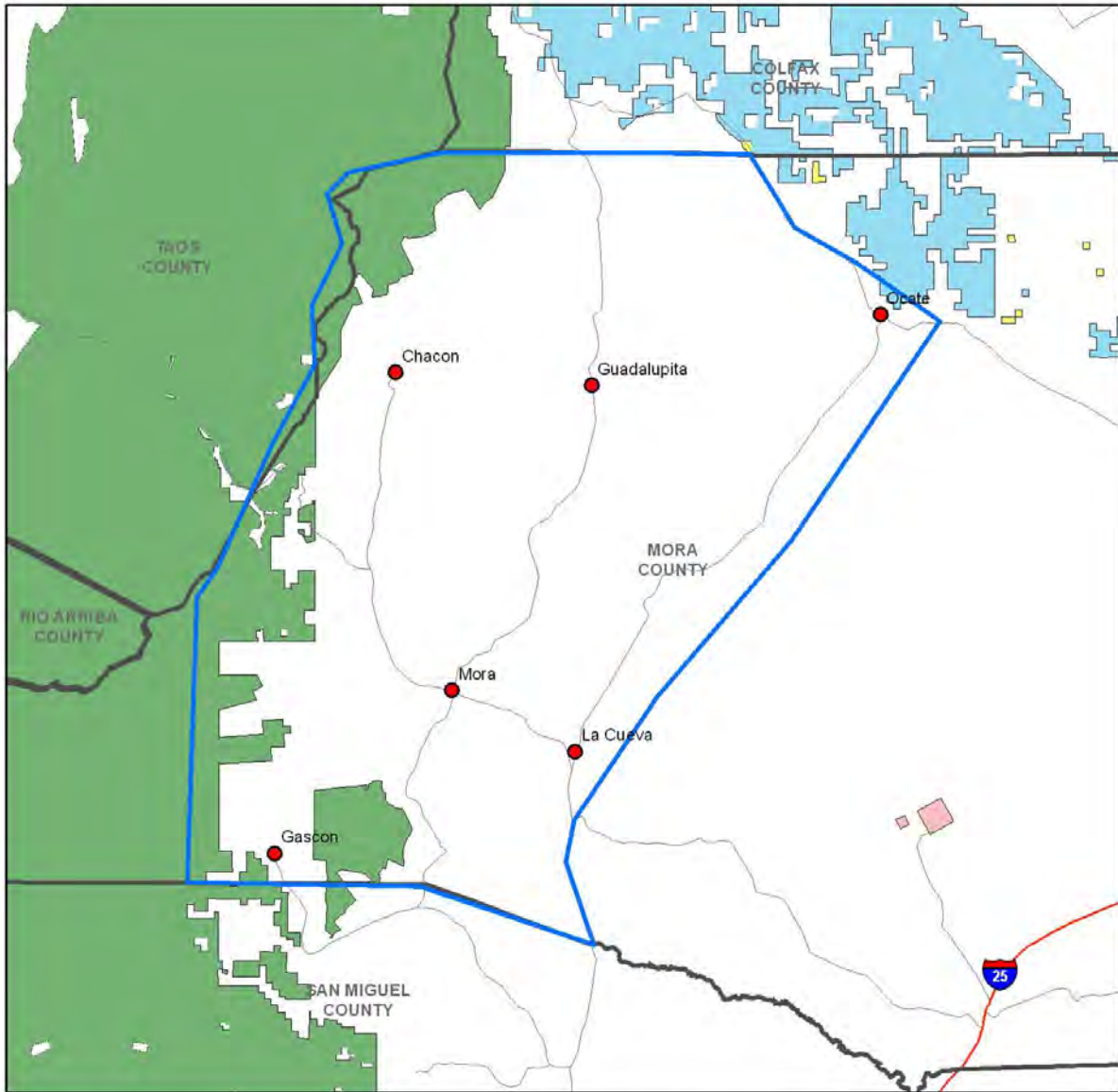


Middle Rio Grande Bosque CWPP

Legend

- | | |
|-------------------------------|-------------------------|
| Middle Rio Grande Bosque CWPP | Department of Defense |
| Private | Department of Energy |
| Bureau of Land Management | Bureau of Reclamation |
| State | Fish & Wildlife Service |
| State Game & Fish | National Park Service |
| Forest Service | NM State Parks |
| Tribal or Pueblo | |

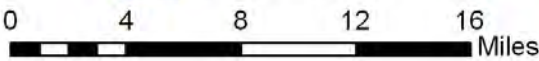


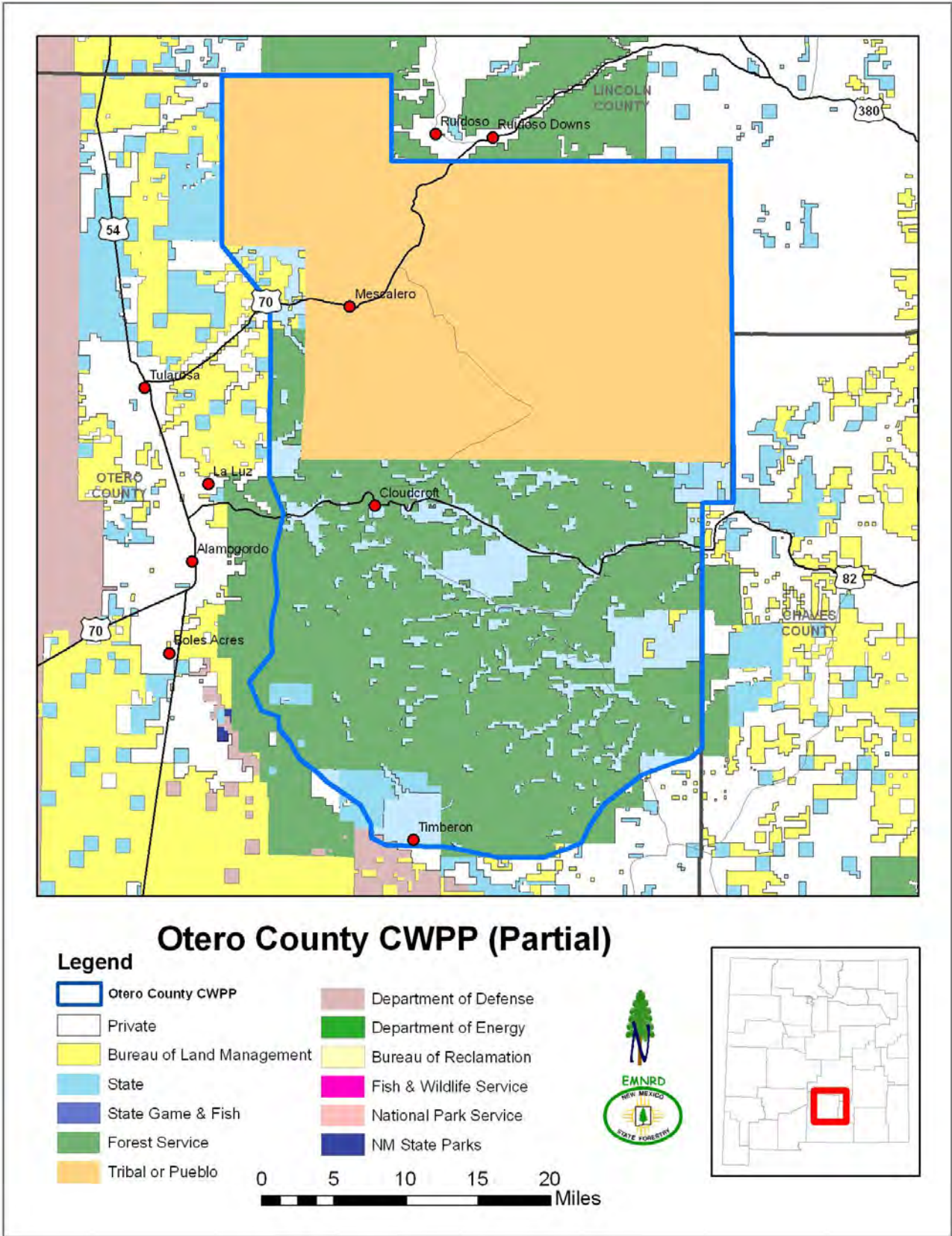


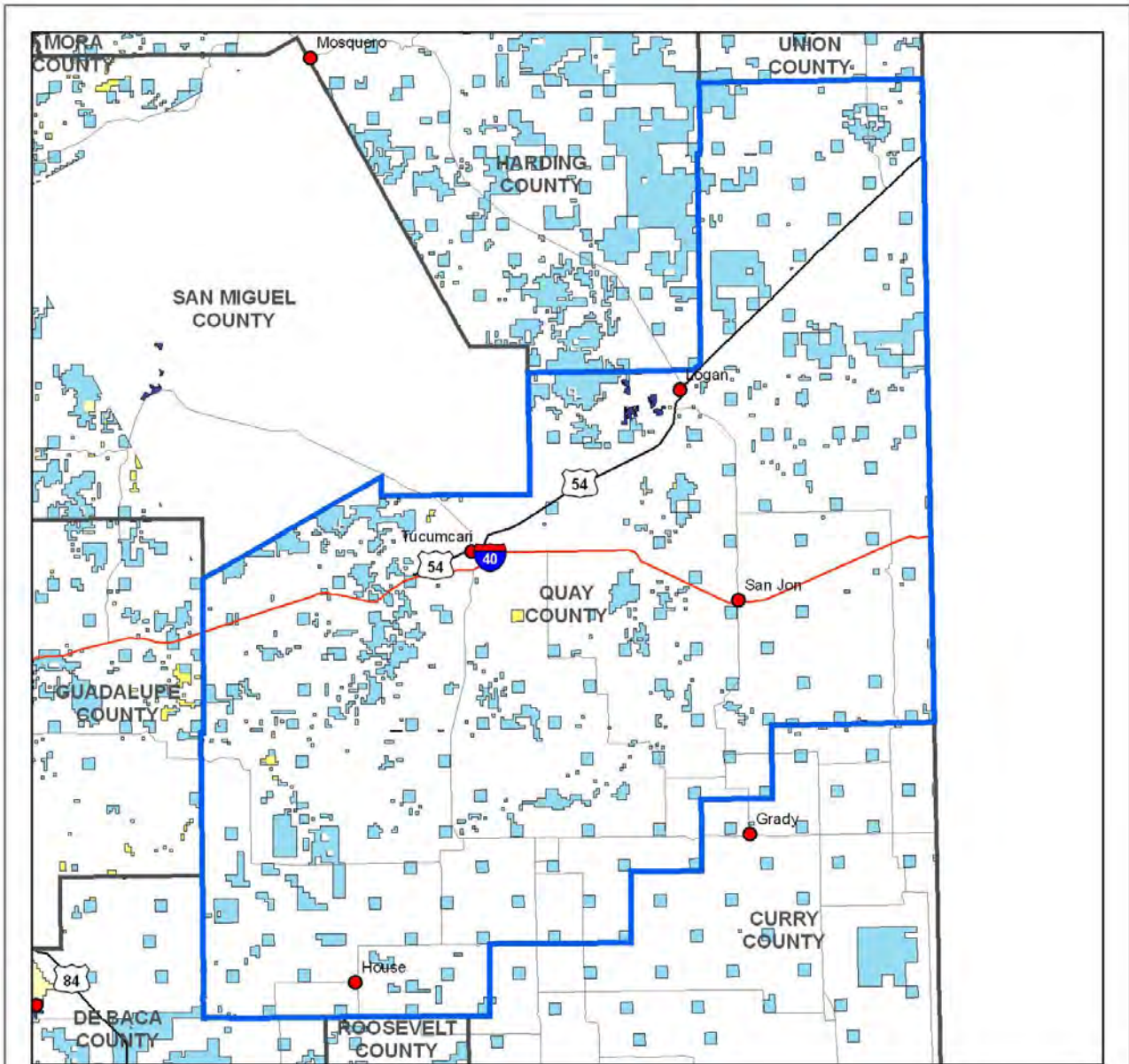
Mora County CWPP (Partial)

Legend

- | | |
|---------------------------|-------------------------|
| Mora County CWPP | Department of Defense |
| Private | Department of Energy |
| Bureau of Land Management | Bureau of Reclamation |
| State | Fish & Wildlife Service |
| State Game & Fish | National Park Service |
| Forest Service | NM State Parks |
| Tribal or Pueblo | |



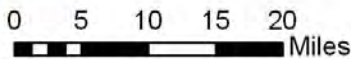


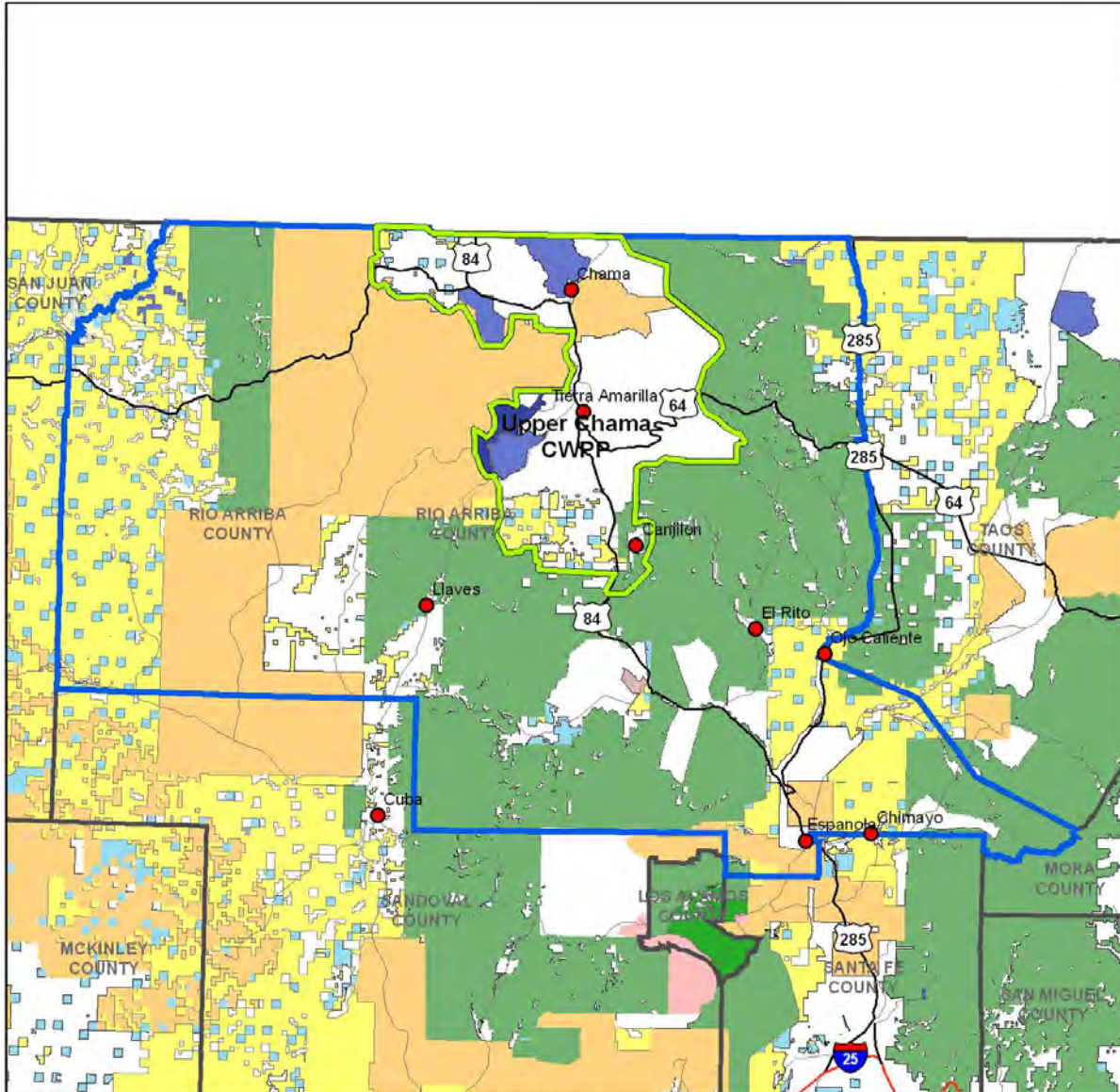


Quay County CWPP

Legend

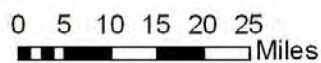
- | | |
|---------------------------|-------------------------|
| Quay County CWPP | Department of Defense |
| Private | Department of Energy |
| Bureau of Land Management | Bureau of Reclamation |
| State | Fish & Wildlife Service |
| State Game & Fish | National Park Service |
| Forest Service | NM State Parks |
| Tribal or Pueblo | |

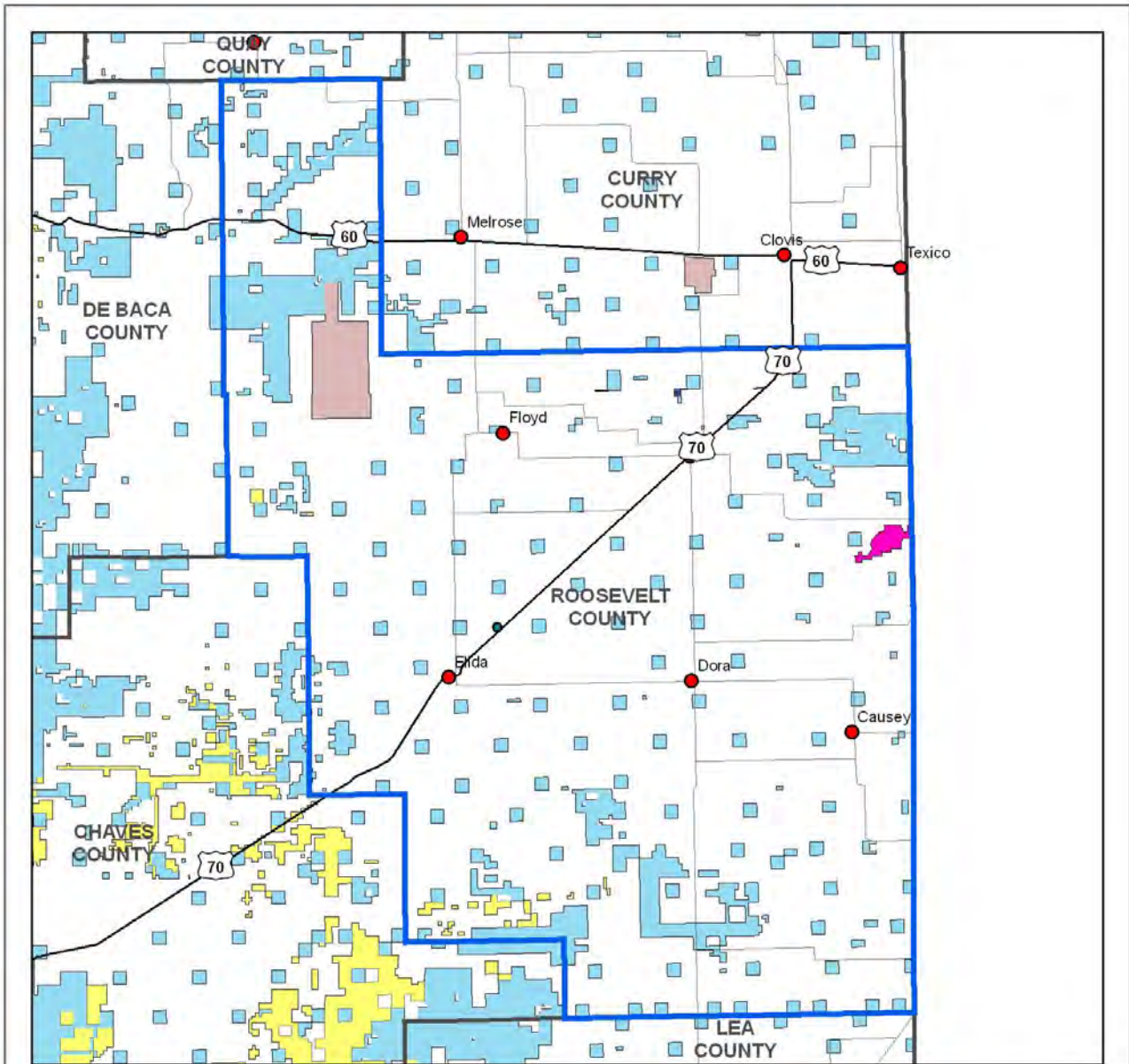




Rio Arriba County and Community CWPP

Legend

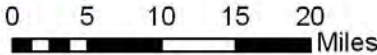


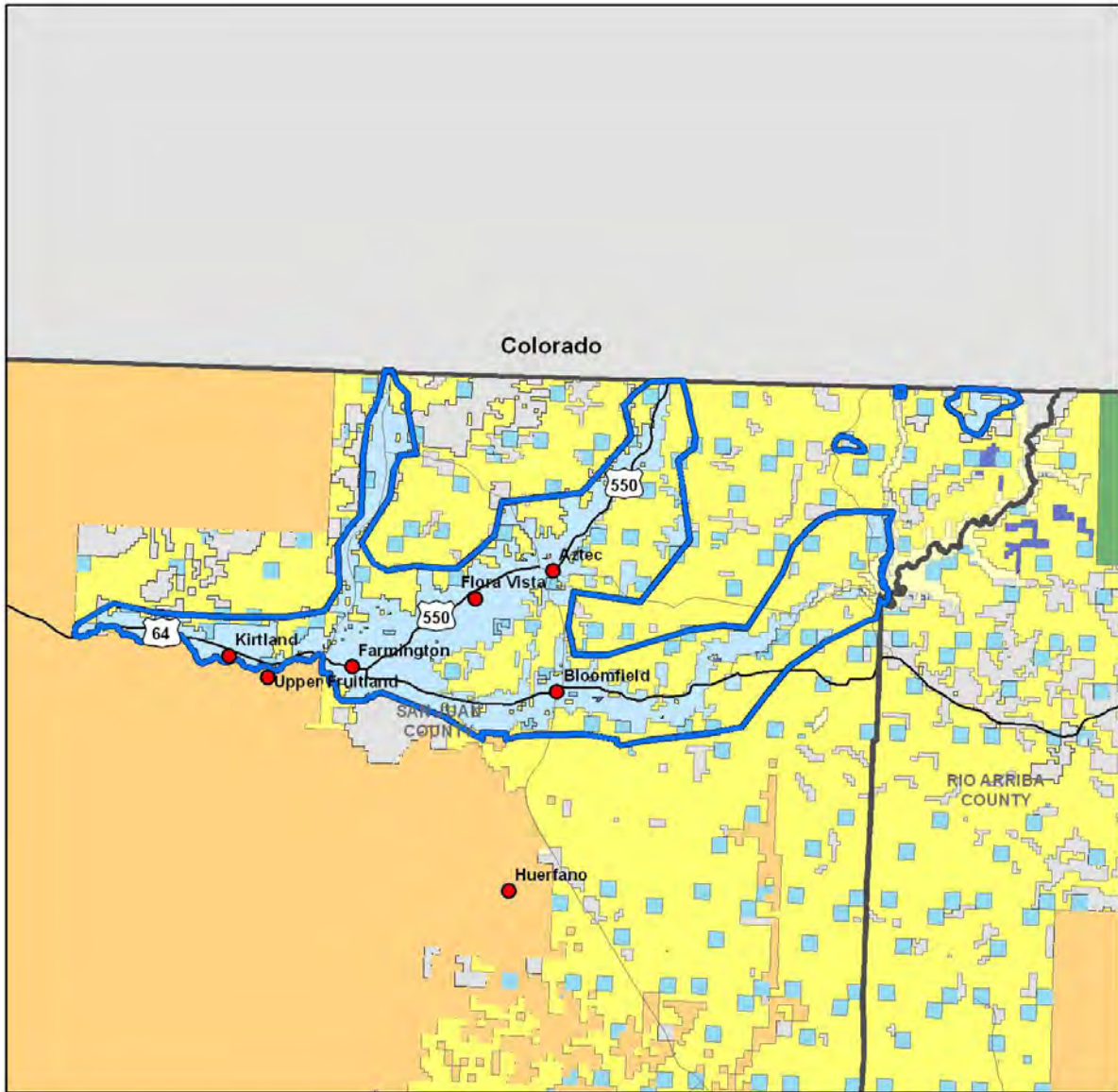


Roosevelt County CWPP

Legend

- Roosevelt County CWPP
- Private
- Bureau of Land Management
- State
- State Game & Fish
- Forest Service
- Tribal or Pueblo
- Department of Defense
- Department of Energy
- Bureau of Reclamation
- Fish & Wildlife Service
- National Park Service
- NM State Parks

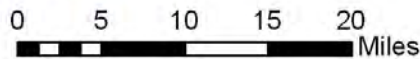


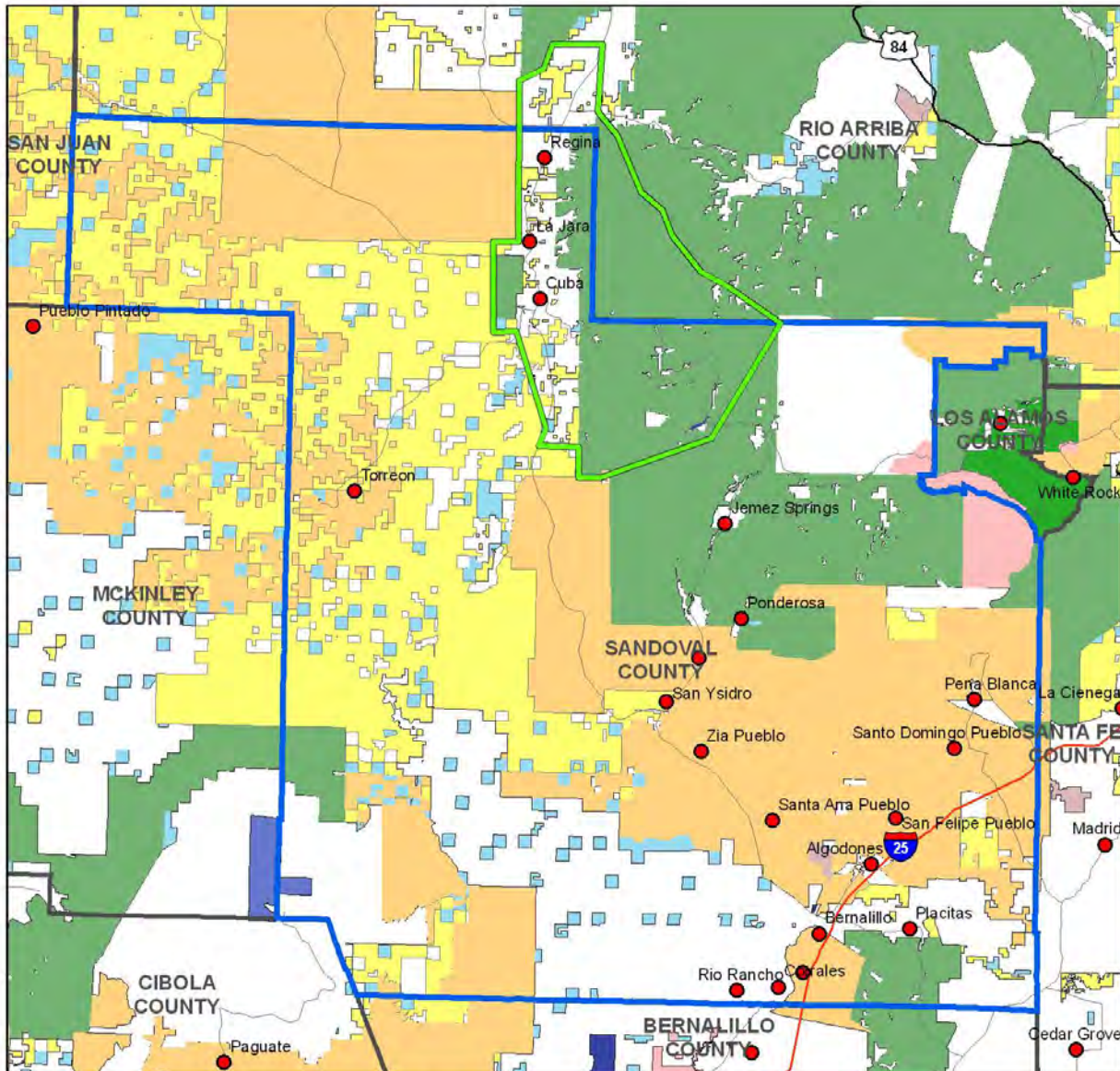


San Juan County CWPP (Partial)

Legend

- San Juan County CWPP
- Private
- Bureau of Land Management
- State
- State Game & Fish
- Forest Service
- Tribal or Pueblo
- Department of Energy
- Bureau of Reclamation
- Fish & Wildlife Service
- National Park Service
- NM State Parks





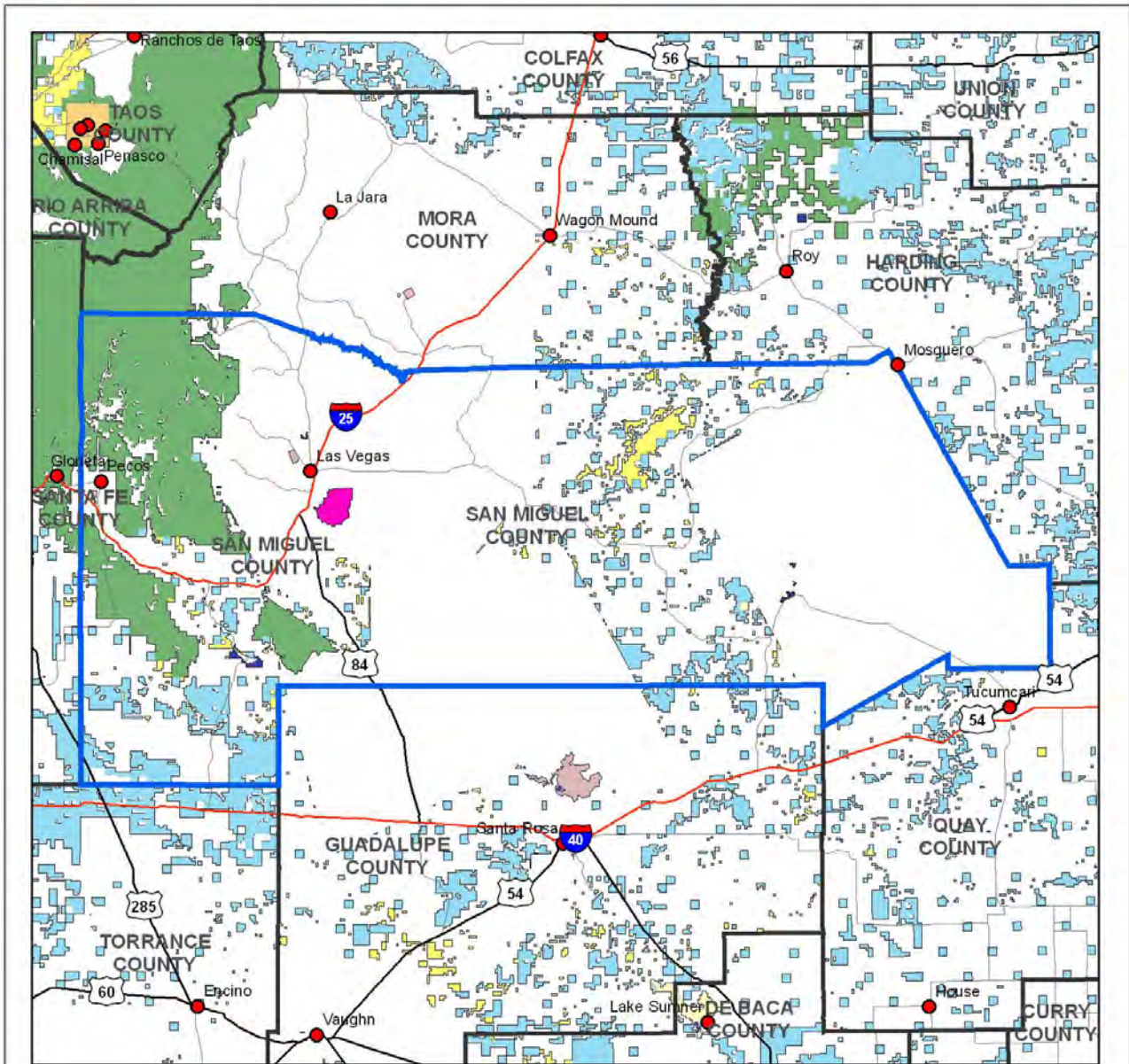
Sandoval County and Community CWPP

Legend

- | | |
|---------------------------|-------------------------|
| Sandoval County CWPP | Department of Defense |
| Cuba CWPP | Department of Energy |
| Private | Bureau of Reclamation |
| Bureau of Land Management | Fish & Wildlife Service |
| State | National Park Service |
| State Game & Fish | NM State Parks |
| Forest Service | |
| Tribal or Pueblo | |

0 5 10 15 20 Miles

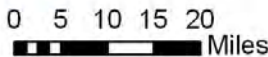


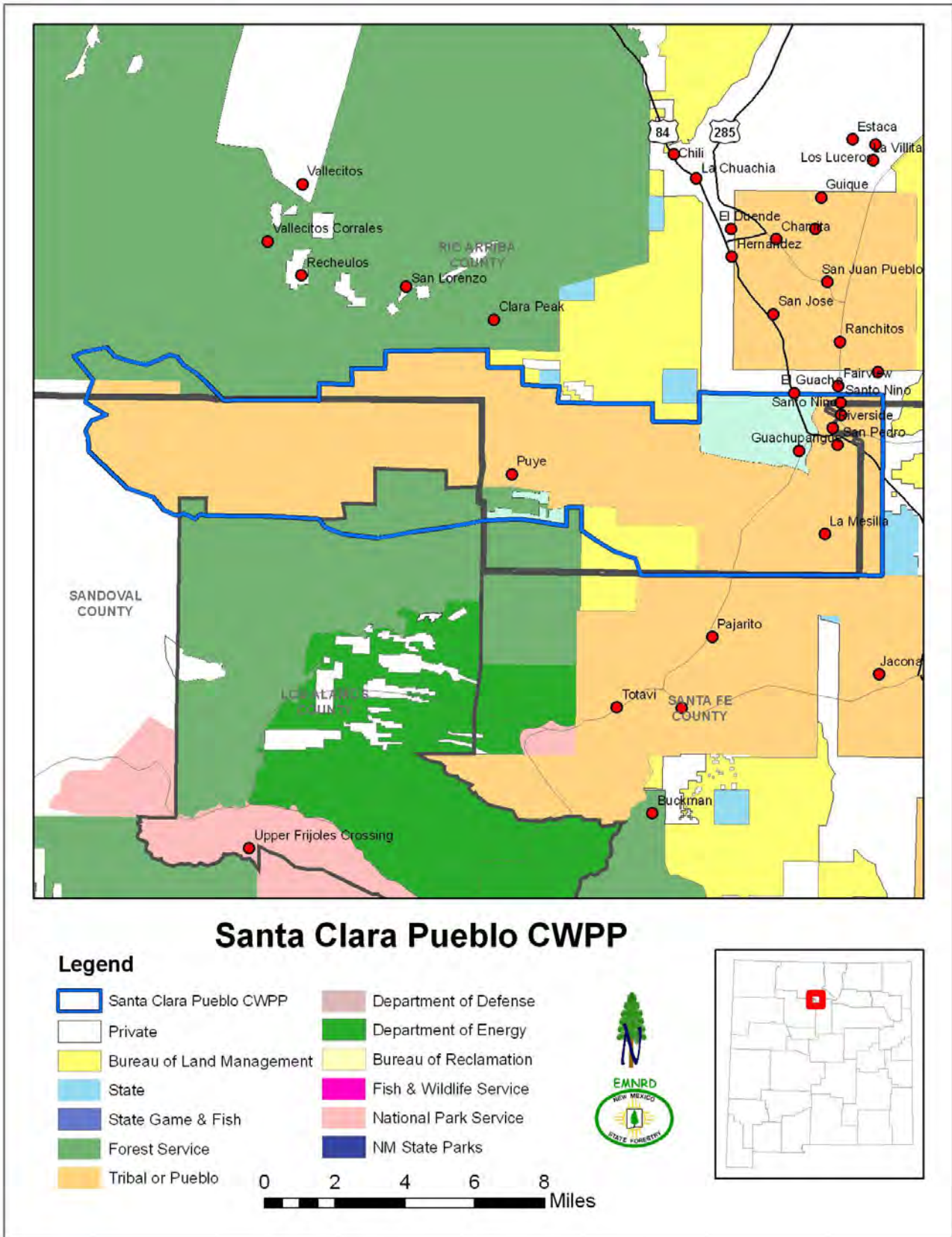


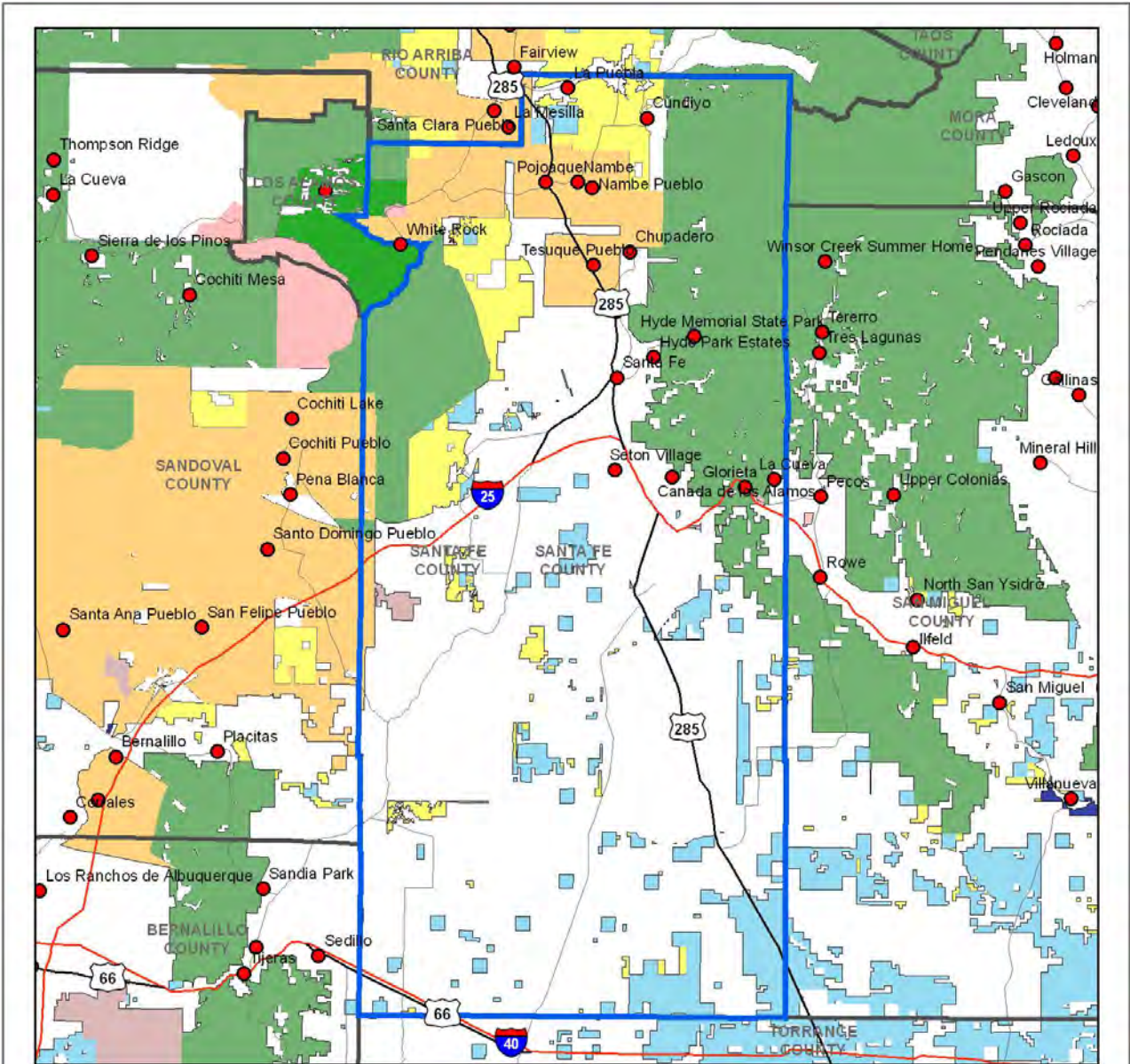
San Miguel County CWPP

Legend

- San Miguel County CWPP
- Private
- Bureau of Land Management
- State
- State Game & Fish
- Forest Service
- Tribal or Pueblo
- Department of Defense
- Department of Energy
- Bureau of Reclamation
- Fish & Wildlife Service
- National Park Service
- NM State Parks



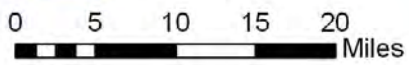


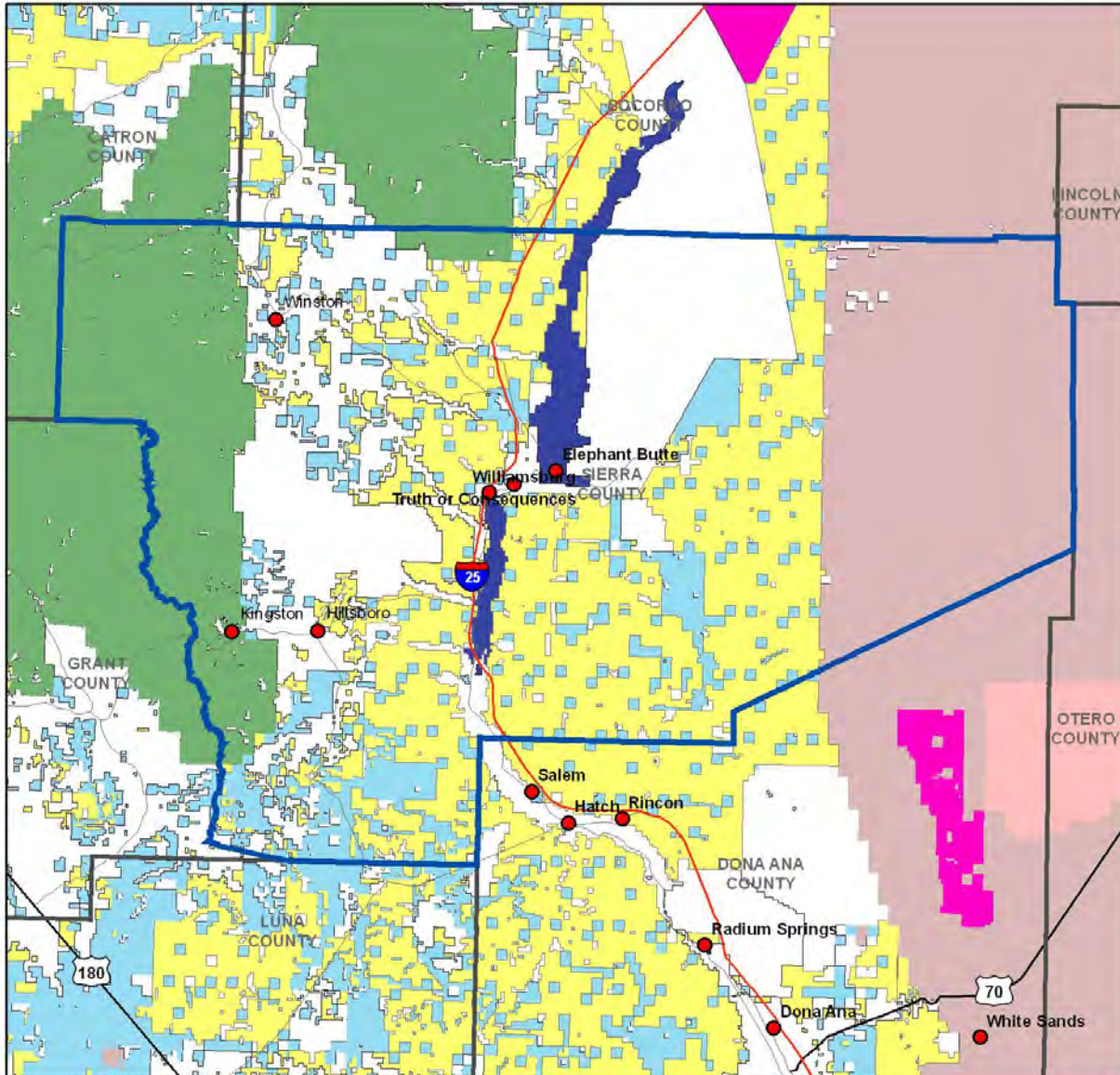


Santa Fe County CWPP

Legend

- Santa Fe County CWPP
- Private
- Bureau of Land Management
- State
- State Game & Fish
- Forest Service
- Tribal or Pueblo
- Department of Defense
- Department of Energy
- Bureau of Reclamation
- Fish & Wildlife Service
- National Park Service
- NM State Parks

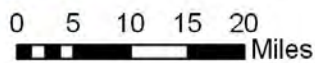


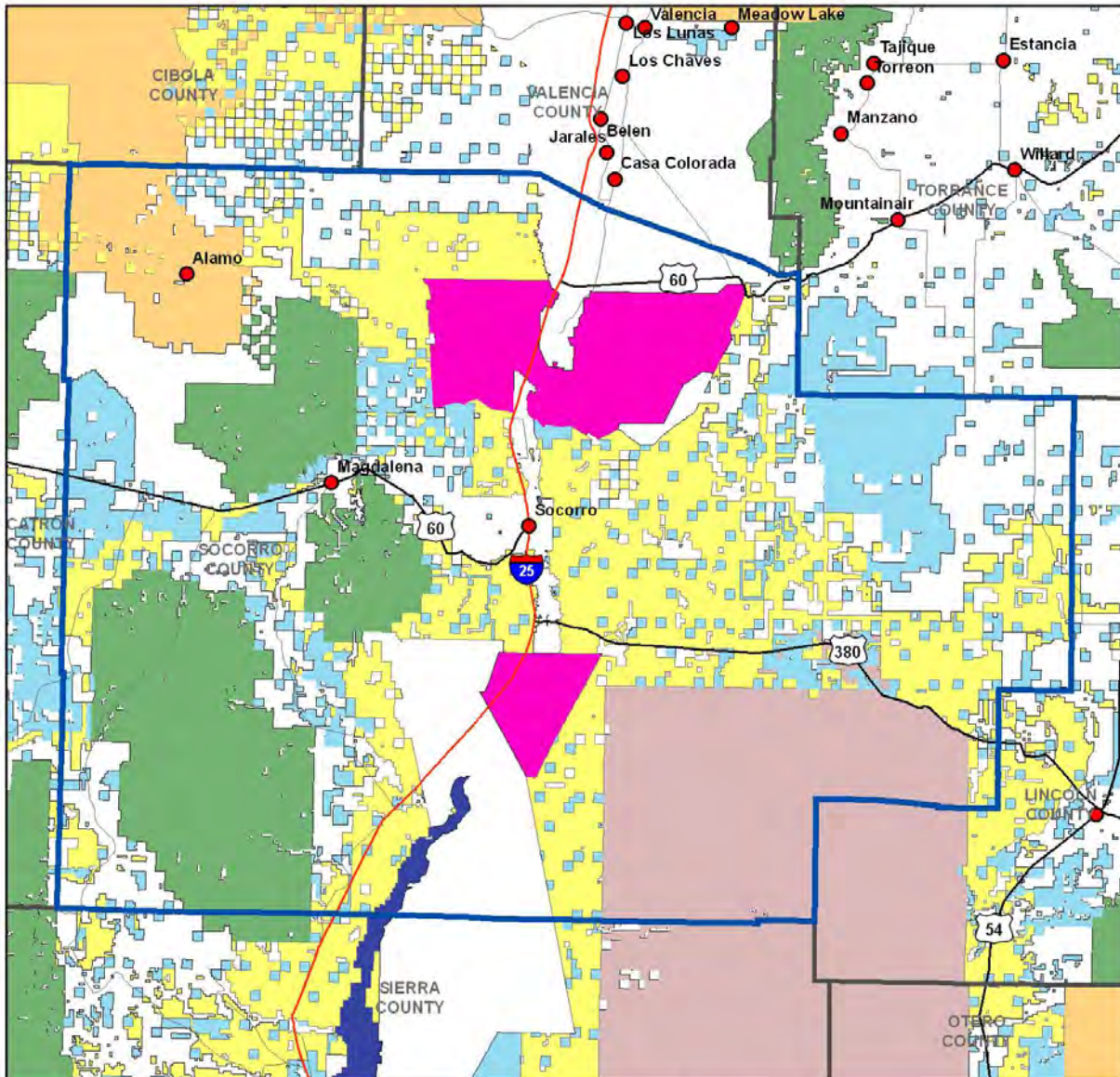


Sierra County CWPP

Legend

- | | |
|---------------------------|-------------------------|
| Sierra County CWPP | Department of Defense |
| Private | Department of Energy |
| Bureau of Land Management | Bureau of Reclamation |
| State | Fish & Wildlife Service |
| State Game & Fish | National Park Service |
| Forest Service | NM State Parks |
| Tribal or Pueblo | |





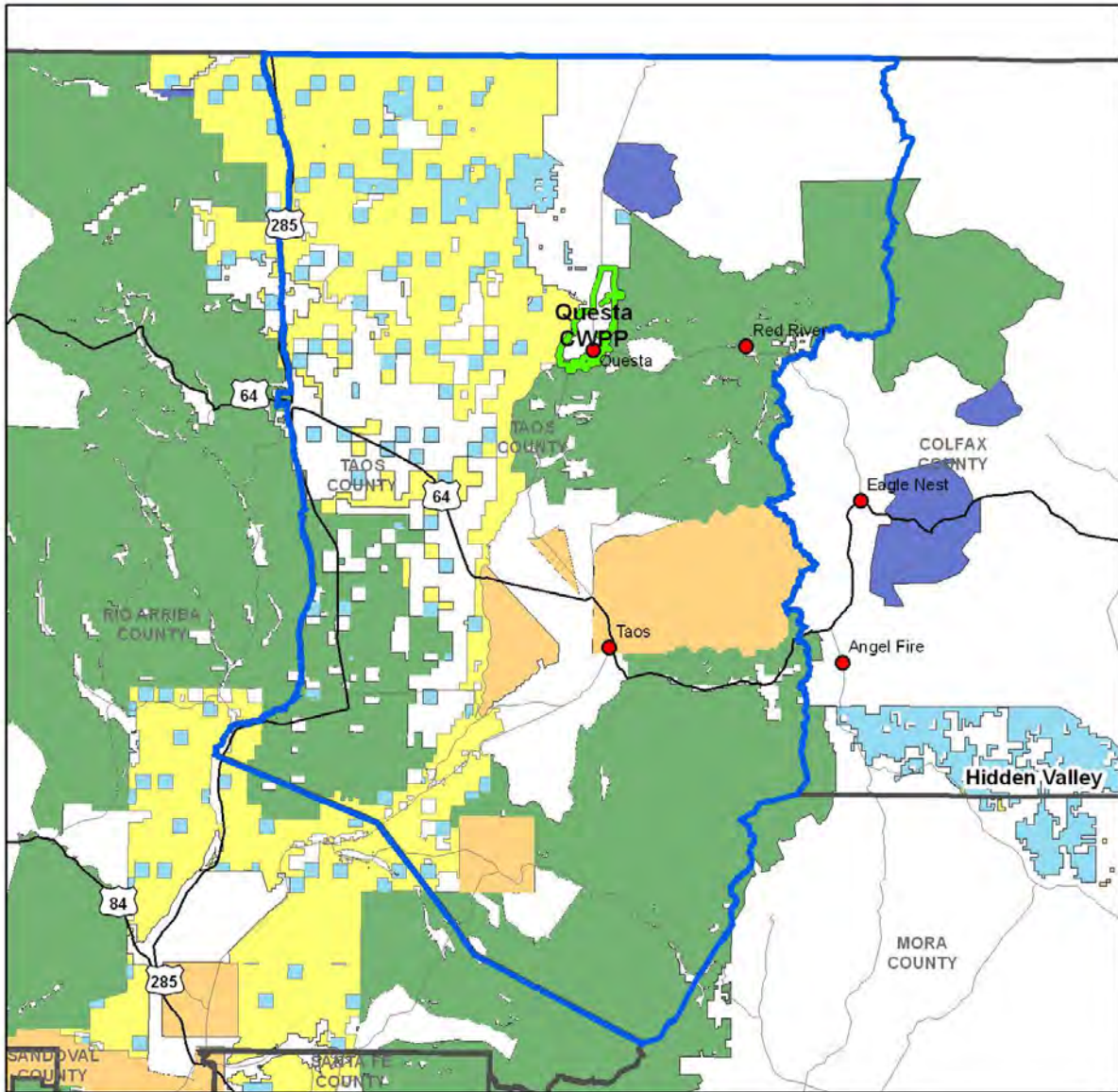
Socorro County CWPP

Legend

- | | |
|---------------------------|-------------------------|
| Socorro County CWPP | Department of Defense |
| Private | Department of Energy |
| Bureau of Land Management | Bureau of Reclamation |
| State | Fish & Wildlife Service |
| State Game & Fish | National Park Service |
| Forest Service | NM State Parks |
| Tribal or Pueblo | |

0 5 10 15 20
 Miles

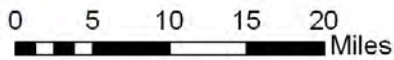


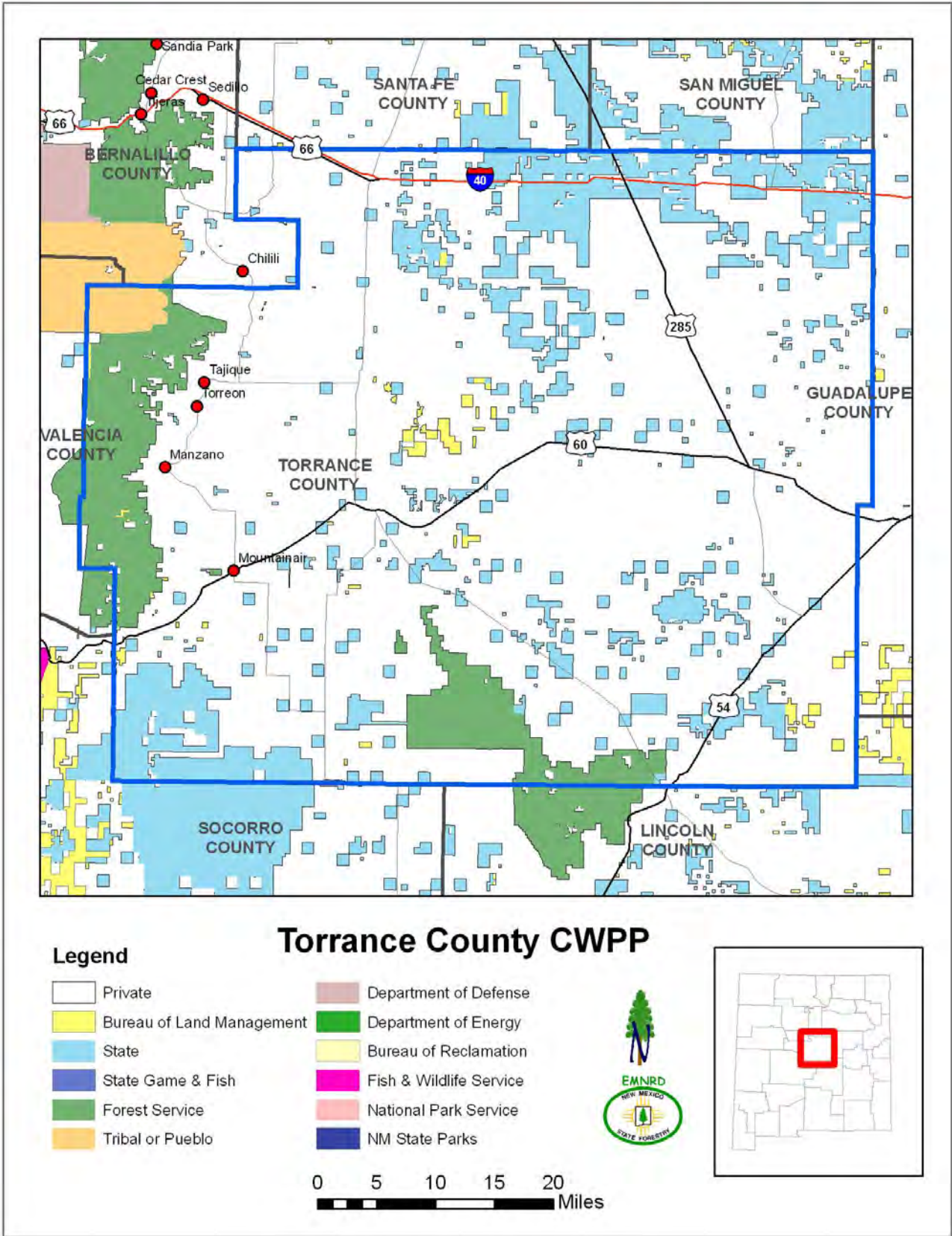


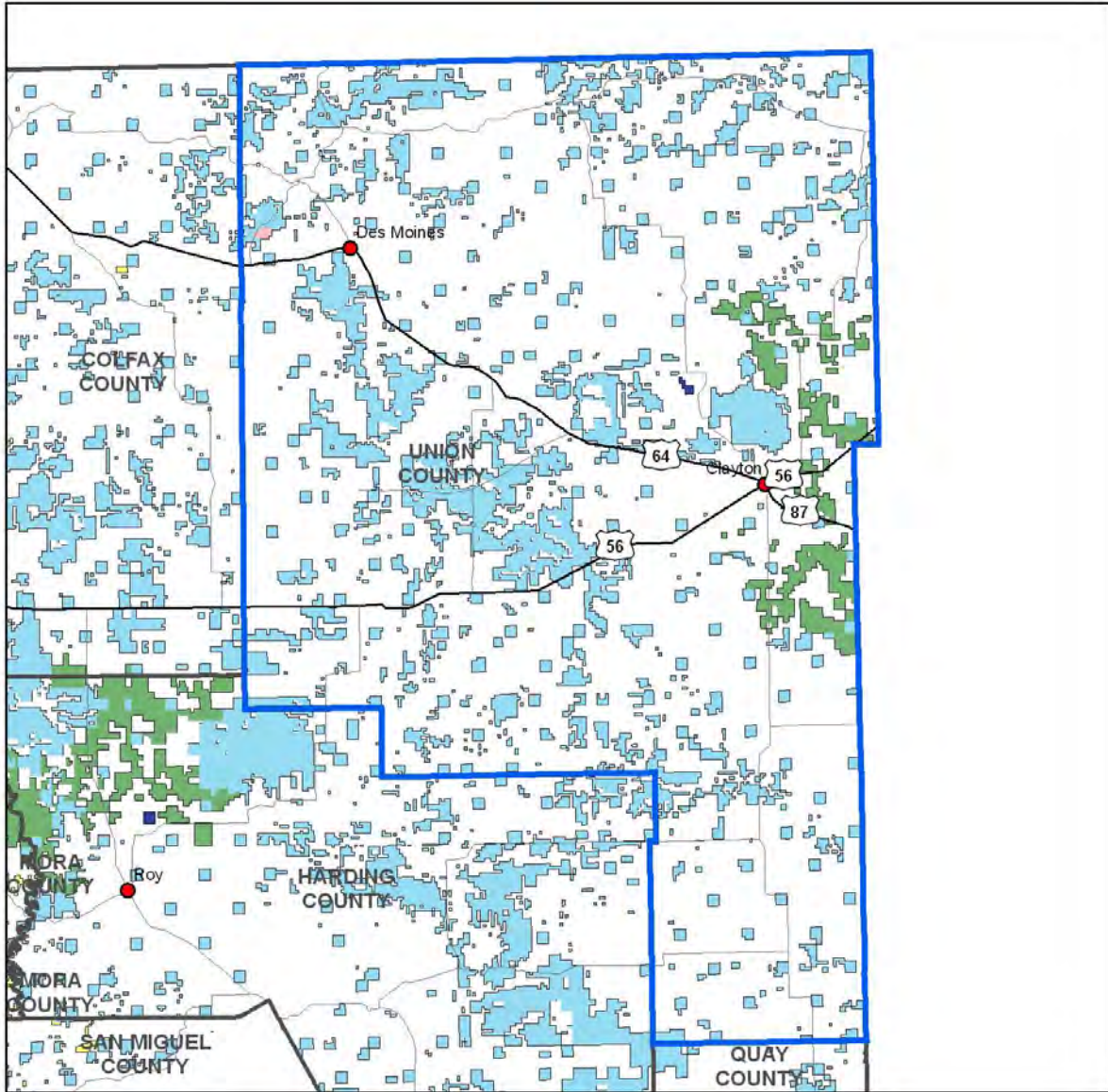
Taos County and Community CWPP

Legend

- | | |
|---------------------------|-------------------------|
| Taos County | Department of Defense |
| Questa Community CWPP | Department of Energy |
| Private | Bureau of Reclamation |
| Bureau of Land Management | Fish & Wildlife Service |
| State | National Park Service |
| State Game & Fish | NM State Parks |
| Forest Service | |
| Tribal or Pueblo | |







Union County CWPP

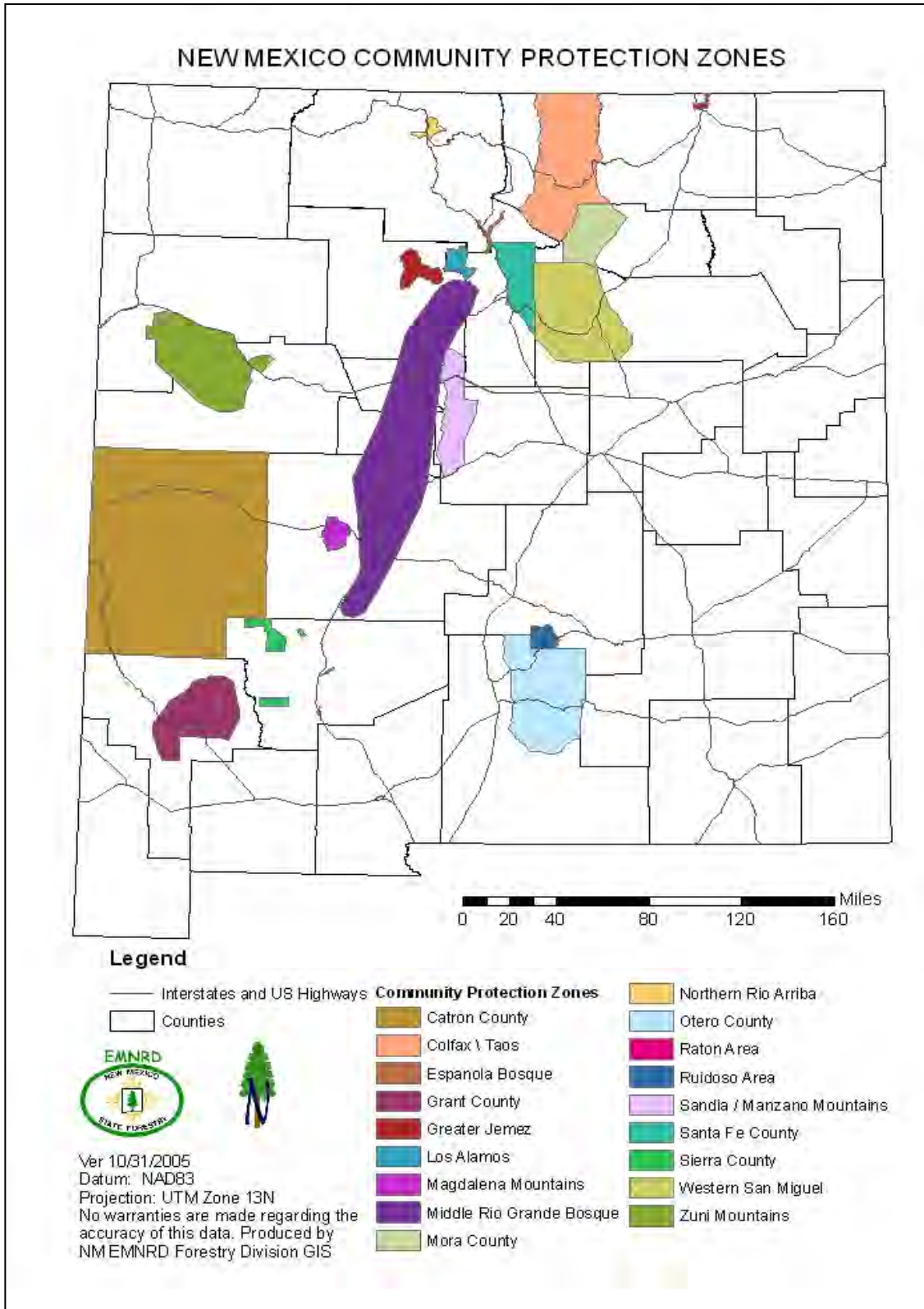
Legend

- | | |
|---------------------------|-------------------------|
| Union County CWPP | Department of Defense |
| Private | Department of Energy |
| Bureau of Land Management | Bureau of Reclamation |
| State | Fish & Wildlife Service |
| State Game & Fish | National Park Service |
| Forest Service | NM State Parks |
| Tribal or Pueblo | |

0 5 10 15 20 Miles



APPENDIX 3



APPENDIX 4

Community Wildfire Protection Plan¹ Summary and Checklist

Step One: Convene Decision Makers

- Form a core team made up of representatives from the appropriate local governments, local fire authority, and state agency responsible for forest management.

Step Two: Engage Interested Parties

- Contact and encourage active involvement in plan development from a broad range of interested organizations and stakeholders.
- Identify and engage local representatives of the USFS and BLM.
- Contact and involve other land management agencies as appropriate.

Step Three: Establish a Community Base Map

- Work with partners to establish a baseline map of the community that defines the community's WUI and displays inhabited areas at risk, forested areas that contain critical human infrastructure, and forest areas at risk for large-scale fire disturbance.

Step Four: Identify Problems to Be Addressed

- Work with partners to identify problems to be addressed, including fuel hazards; risk of wildfire occurrence; structural ignitability; local preparedness capability; and location of homes, businesses, essential infrastructure and other community values at risk.
- This "community risk assessment" can be simple or complex depending on the resources available to the community and partners.

Step Five: Establish Community Priorities and Recommendations

- Use the base map and community risk assessment to facilitate a collaborative community discussion that leads to the identification of local priorities for fuel treatment, reducing structural ignitability, and improving fire response capability.
- Clearly indicate whether priority projects are directly related to protection of communities and essential infrastructure or to reducing wildfire risks to other community values.

Step Six: Develop an Action Plan and Assessment Strategy

- Consider developing a detailed implementation strategy to accompany the CWPP, as well as a monitoring plan that will ensure its long-term success.

Step Seven: Complete the Community Wildfire Protection Plan

- Consider the CWPP complete for the year and date stamp the document.
- Communicate the results to the community and partners.
- Collect information to update the plan for revision the following year.

¹ This checklist was adapted from the publication "Preparing a Community Wildfire Protection Plan: A handbook for Wildland-Urban Interface Communities" that can be downloaded from www.safnet.org. The checklist was modified by the New Mexico Fire Planning Task Force for use in New Mexico.

APPENDIX 5

REFERENCE LIST:

Wildland/Urban Interface Fire Hazard Assessment Methodology. NWCG, undated (c.1997).

A Collaborative Approach for Reducing Wildland Fire Risks to Communities and the Environment. 10-Year Comprehensive Strategy Implementation Plan. May 2002.

FIELD GUIDANCE Identifying and Prioritizing Communities at Risk. National Association of State Foresters. June 2003

Preparing a Community Wildfire Protection Plan A handbook for Wildland-Urban Interface Communities. Society of American Foresters. March 2004

New Mexico Communities At Risk Assessment Plan Neskauskas et. al.
April 2004

New Mexico Communities At Risk Assessment Plan Neskauskas et. al.
April 2005