

**2005
NEW MEXICO
COMMUNITIES AT RISK ASSESSMENT PLAN**



**ENERGY, MINERALS AND NATURAL RESOURCES DEPARTMENT
FORESTRY DIVISION
APRIL 2005**

Cover photo: Defensible space efforts in the Ranches of Sonterra subdivision in the Greater Ruidoso Area. March 2004

Prepared by:
Nancy Neskauskas
EMNRD –Forestry Division

Table of Contents

Executive Summary.....	5
2004 Accomplishments.....	6
Table 1- Communities with Completed CWPPs.....	8
Figure 1- NM Community Protection Zones.....	9
Table 2- Communities at Risk List.....	10
Appendix 1- SW Area BIA Hazard Risk Rating.....	16
Appendix 2-Community Wildfire Protection Plan Checklist.....	17
Appendix 3-Community Protection Zone Maps.....	18
Appendix 4- Other Plans and Assessments Addressing Fire Hazards in New Mexico.....	55
Appendix 4-Reference List.....	56

EXECUTIVE SUMMARY

The New Mexico Fire Planning Task Force (NMFPTF) was created by the 2003 New Mexico Legislature to identify wildland urban interface areas most vulnerable to danger from forest fire in the State of New Mexico. Additionally, the Task Force works with local governments in developing minimum standards for building codes and ordinances that will reduce the threat of forest fires to those communities.

The NMFPTF annually reviews the Communities at Risk list, whether for the inclusion of new communities or the reduction of adjective ratings or the ultimate removal of communities from the list.

By September 30 of each year the Communities at Risk subgroup of the NMFPTF identifies updates and revisions to the Communities at Risk list and submits these to the full NMFPTF for approval. By December 15 of each year the NMFPTF publishes updates and revisions to the list and provides a finalized report to the Governor and New Mexico legislature.

The National Fire Plan has brought funding into the state for planning and treatment in fire prone areas. Matching complementary projects on private and adjacent federal lands continues to be the primary goal.

This assessment highlights eighteen Community Protection Zones (in GIS polygon format) around the state. Inside these polygons are 224 communities. Using standard hazard risk rating methodology there are 136 communities rated high, 66 rated moderate and 22 rated at low risk from wildland fire.

Highlights in the 2005 plan include the removal of 2 communities that have been determined to fall within the boundaries of the Village of Ruidoso. The addition of six communities to the list is being made after consultation with local community working groups in collaboration with state and federal partners. The completion of Community Wildfire Protection Plans for the Greater Ruidoso, Otero County and Black Range WUI groups.

The communities listed annually in this publication will replace the January 2001 Federal Register listing for Communities at Risk. The information will be forwarded to federal cooperators for their use.

2004 ACCOMPLISHMENTS

Community groups throughout New Mexico have had a busy year working on the ground to complete ongoing projects. At the same time many communities are completing their Community Wildfire Protection Plans in the nationally recommended format provided by the Society of American Foresters publication "Preparing a Community Wildfire Protection Plan: A Handbook for Wildland-Urban Interface Communities" available at www.safnet.org. (see Appendix 4)

Funding requests for treatments in interface areas continues to exceed expectations as well as available funding. However community groups and state and local government continue to add projects and treat acres across the state.

Two Wildland Urban Interface (WUI) groups presented requests to the Fire Planning Task Force Communities at Risk subgroup for consideration.

The first was the Greater Ruidoso Area WUI group. The group revised the base map from the 2004 Communities at Risk (CAR) Plan (see page 45). There were changes to the boundaries to better reflect work in progress and future work plans. The group determined that the communities of Hollywood and Ponderosa Hills listed in the 2004 CAR Plan actual fall within the municipal boundaries of the Village of Ruidoso. These communities will be deleted from the list. Treatments are ongoing in these subdivisions under the auspices of the Village of Ruidoso.

The Greater Ruidoso Area WUI working group has determined four additional communities for inclusion along with a hazard risk rating for the communities. They are Carrizo Canyon rated high, Ranches of Sontera rated high, Loma Grande rated high, and Angus rated high.

Finally in October 2004 the group finalized the Greater Ruidoso Area Community Wildfire Protection Plan. All collaborating partners have signed off on the plan. The plan covers 14 high risk communities. The entire plan can be viewed at www.nmforestry.com.

The Otero County WUI group worked diligently to complete the Otero County Wildfire Protection Plan in November 2004. The group revised the base map from the 2004 CAR Plan (see page 41). Areas in the eastern portion of the Mescalero Apache Reservation and southeast quadrants of the Lincoln National Forest were removed that pose little threat to homes and communities. The base map now better reflects areas where work is ongoing and projected in agency work plans. The entire plan can be viewed at www.nmforestry.com.

The Otero County WUI working group has determined that there are two additional communities for inclusion along with a hazard risk rating for the communities. They are Sunspot rated high due to the density and sensitive nature of scientific instruments located there and the community of Bent that has been rated at moderate risk.

The Sierra County WUI group completed a Community Wildfire Protection Plan in January 2005. This work was completed after the Fire Planning Task Force – Communities at Risk Subgroup met on November 16, 2004. In 2005 the Sierra County WUI group will petition the Communities at Risk Subgroup to approve the plan and include the communities of Monticello and Placitas. The entire plan can be viewed at www.nmforestry.com.

The Sierra County WUI group has remapped the Black Range Community Protection Zones to more accurately reflect the occlude nature of the communities (see page 19). There are also two areas mapped along the lower Rio Grande. While there is no risk from wildland fire entering the adjacent communities of Truth or Consequences, Elephant Butte, Williamsburg and Arrey these communities can and will be impacted by smoke should these large areas of salt cedar and other invasive plants ignite. The northern area has mitigation work in progress funded by a Collaborative Forest Restoration Grant and mitigation activities are scheduled for the southern portion north of the community of Arrey.

There has been a request from the US Fish and Wildlife Service (FWS) to include several communities that are in close proximity to FWS lands. There is concern that there could be a loss of funding to FWS if refuges are not associated with a community at risk. The two refuges of concern are the Bitter Lakes National Wildlife Refuge with the associated communities of Roswell, Acme and Melina and the Maxwell National Wildlife Refuge with the associated community of Maxwell. The FWS has made contact with local officials and completed some preliminary assessment work. The Communities at Risk Subgroup has tasked the FWS with increasing community involvement in the planning process before these communities are considered for inclusion as Communities at Risk.

The Catron County WUI group is working on completion of a Community Wildfire Protection Plan with a target date of late spring 2005.

The Grant County WUI group will be completing a Community Wildfire Protection Plan with a target date of Fall 2005.

GIS work is being completed along the Middle Rio Grande Community Protection Zone. This is a challenging area as portions of four counties are included. The Community Wildfire Protection Plan for this area is anticipated to be completed in the summer of 2005.

There are Community Wildfire Protection Plans underway in the Colfax/Taos, Espanola Bosque (including the Pilar area), City of Santa Fe, Greater Jemez,

Sandia/Manzano Mountains, Mora, Raton, Northern Rio Arriba County, and Western San Miguel areas that should be completed during calendar year 2005.

The CWPP process is starting for the Truchas area of southern Rio Arriba County. This group has the potential of requesting Community at Risk status in the coming year.

Again it should be noted that the communities listed within the polygons are by no means a final tally of areas at risk from wildland fire. Communities not listed have the opportunity to be included through the development of a Community Wildfire Protection Plan (CWPP).

The 2005 Communities at Risk Plan highlights eighteen Community Protection Zones (in GIS polygon format) around the state. Inside these polygons are 224 identified communities. Using standard hazard risk rating methodology there are 136 communities rated high, 66 rated moderate and 22 rated at low risk from wildland fire.

Communities are encouraged to contact their local Forestry Division district office for assistance. Agencies concerned with communities or occluded subdivisions near ecologically or culturally sensitive areas may have these areas considered for inclusion through the development of Hazard Risk Assessments that include a local community collaboration component.

Through the use of CWPPs the Healthy Forest Restoration Act provides communities with the opportunity to influence where and how federal agencies implement fuel reduction projects on federal lands and how federal funds are distributed for projects on non-federal lands. Local CWPPs can take a variety of forms based on the publication "Preparing a Community Wildfire Protection Plan: A Handbook for Wildland-Urban Interface Communities" available at www.safnet.org.

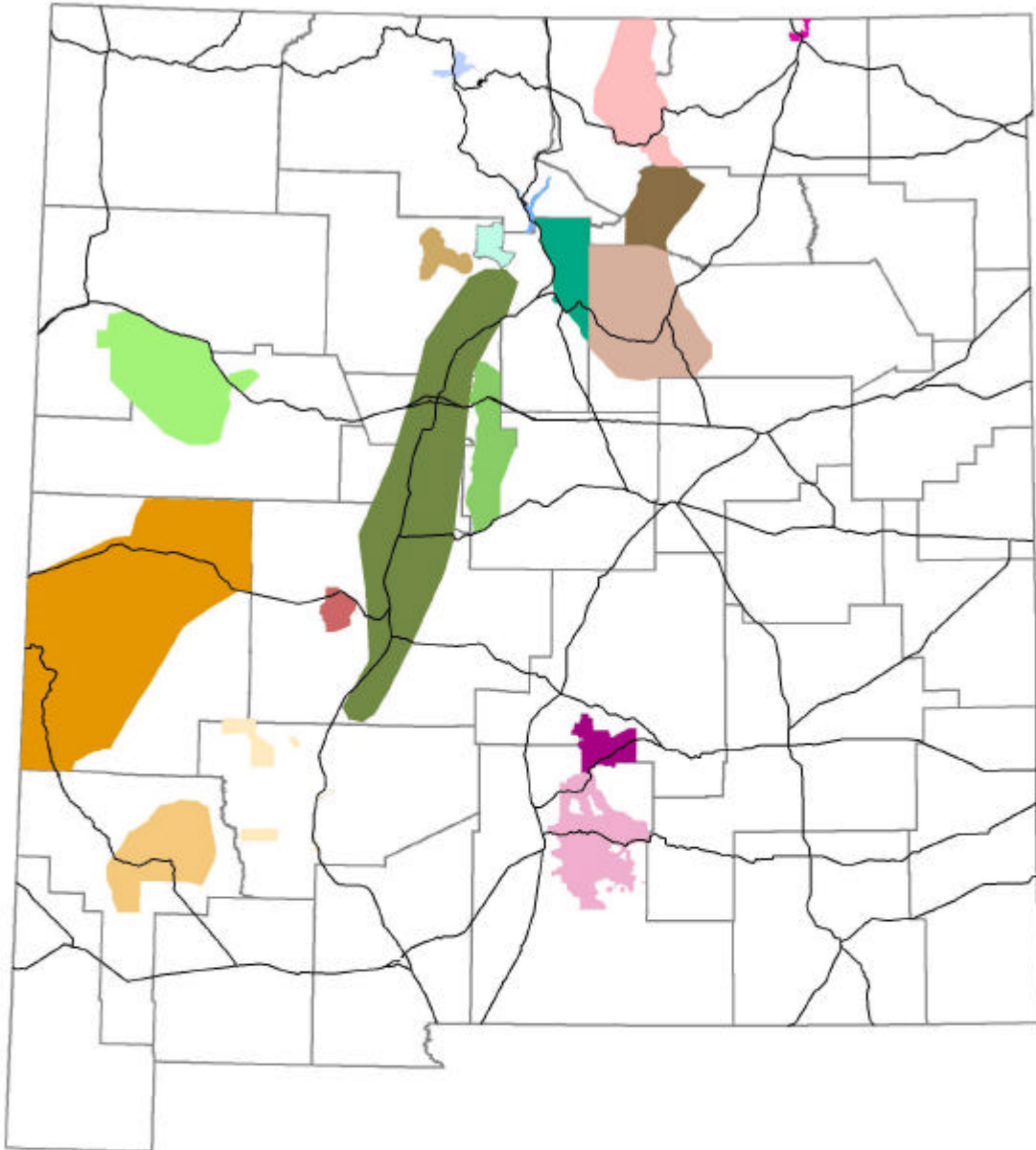
The communities listed annually in this publication will replace the January 2001 Federal Register listing for communities at risk. The information will be forwarded to federal cooperators for their use and reside in a database managed by the USGS that includes the name and latitude and longitude of each community.

Table 1
Communities with Completed CWPPs

Community	Completion Date	Available at
Black Range/Sierra County	January 2005	nmforestry.com
Greater Ruidoso Area	October 2004	nmforestry.com
Otero County	November 2004	nmforestry.com

FIGURE 1

NEW MEXICO COMMUNITY PROTECTION ZONES



Legend

- Interstates and US Highways
- Counties

Community Protection Zones

- Northern Rio Arriba
- Colfax \ Taos
- Raton Area
- Espanola Bosque
- Mora County
- Greater Jemez
- Los Alamos
- Santa Fe County
- Western San Miguel
- Zuni Mountains
- Middle Rio Grande Bosque
- Sandia / Manzano Mountains
- Catron County
- Magdalena Mountains
- Grant County
- Black Range
- Otero County
- Greater Ruidoso Area



Ver 2/24/2005

Datum: NAD83 Projection: UTM, Zone 13N
 Base data from NM RGIS Clearinghouse or derived by NM Forestry.
 No warranties are made regarding the accuracy of this data.
 Produced by NM EMNRD Forestry Division GIS



**TABLE 2
2005 COMMUNITIES AT RISK LIST**

COMMUNITY PROTECTION ZONE	COMMUNITY	RANKING
Black Range/Sierra County	Chloride	H
Black Range/Sierra County	Hillsboro	M
Black Range/Sierra County	Kingston	M
Black Range/Sierra County	Poverty Creek	M
Black Range/Sierra County	Winston	H
Catron	Apache Creek	M
Catron	Aragon	M
Catron	Coyote Creek	M
Catron	Cruzville	M
Catron	Datil Area	H
Catron	Elk Springs	H
Catron	Glenwood	M
Catron	Horse Mountain	M
Catron	Jewett Gap	H
Catron	Luna	H
Catron	Mogollon	H
Catron	Pie Town Area	M
Catron	Quemado Lake Estates	H
Catron	Rancho Grande Estates	H
Catron	Reserve	H
Catron	Wildhorse	M
Catron	Willow Creek	H
Colfax/Taos	Amalia	M
Colfax/Taos	Angel Fire	H
Colfax/Taos	Arroyo Hondo	M
Colfax/Taos	Arroyo Seco	M
Colfax/Taos	Black Lake	H
Colfax/Taos	Costilla	M
Colfax/Taos	Eagle Nest	L
Colfax/Taos	El Padro	L
Colfax/Taos	Idlewild	H
Colfax/Taos	Lakeview Pines	H
Colfax/Taos	La Lama	L
Colfax/Taos	Latir	H
Colfax/Taos	Questa	M
Colfax/Taos	Red River	M
Colfax/Taos	Shady Brook	H
Colfax/Taos	Taos	L
Colfax/Taos	Taos Pueblo	H*
Colfax/Taos	Valle Econdido	H
*Hazard Risk rated by BIA		

COMMUNITY PROTECTION ZONE	COMMUNITY	RANKING
Espanola Bosque	Alcalde	M
Espanola Bosque	Chamita	M
Espanola Bosque	Chili	M
Espanola Bosque	Embudo	L
Espanola Bosque	Espanola	M
Espanola Bosque	Fairview	M
Espanola Bosque	Hernandez	H
Espanola Bosque	La Mesilla	M
Espanola Bosque	Los Luceros	M
Espanola Bosque	Lyden	M
Espanola Bosque	San Juan Pueblo	H*
Espanola Bosque	Santa Clara Pueblo	H*
Espanola Bosque	Velarde	L
Grant	Bayard	M
Grant	Burro Mountain Area	M
Grant	Hanover	H
Grant	Lake Roberts	H
Grant	LS Mesa	H
Grant	Mimbres Valley	H
Grant	Oak Grove	H
Grant	Pinos Altos	H
Grant	San Lorenzo	M
Grant	Santa Clara	M
Grant	Silver City	M
Grant	White Signal	H
Greater Jemez	Cochiti Mesa	H
Greater Jemez	Fenton Lake State Park	H
Greater Jemez	Jemez Springs	M
Greater Jemez	La Cueva	H
Greater Jemez	Seven Springs	H
Greater Jemez	Sierra de Los Pinos	H
Greater Jemez	Thompson Ridge	H
Los Alamos	Los Alamos	M
Los Alamos	White Rock	M
Magdalena Area	Hop Canyon	H
Magdalena Area	Magdalena	M
Magdalena Area	Mills Canyon	H
Magdalena Area	Water Canyon	M

COMMUNITY PROTECTION ZONES	COMMUNITY	RANKING
Middle Rio Grande Bosque	Abeytas	H
Middle Rio Grande Bosque	Albuquerque	H
Middle Rio Grande Bosque	Belen	H
Middle Rio Grande Bosque	Bernalillo	H
Middle Rio Grande Bosque	Bernardo	M
Middle Rio Grande Bosque	Bosquecito	H
Middle Rio Grande Bosque	Cochiti Lake	H
Middle Rio Grande Bosque	Cochiti Pueblo	H*
Middle Rio Grande Bosque	Corrales	H
Middle Rio Grande Bosque	Isleta Pueblo	H*
Middle Rio Grande Bosque	La Joya	H
Middle Rio Grande Bosque	Lemitar	M
Middle Rio Grande Bosque	Los Lunas	H
Middle Rio Grande Bosque	Los Ranchos	H
Middle Rio Grande Bosque	Pena Blanca	M
Middle Rio Grande Bosque	Peralta	H
Middle Rio Grande Bosque	Placitas	M
Middle Rio Grande Bosque	Pueblito	H
Middle Rio Grande Bosque	San Acacia	H
Middle Rio Grande Bosque	San Antonio	M
Middle Rio Grande Bosque	San Felipe Pueblo	H*
Middle Rio Grande Bosque	San Pedro	H
Middle Rio Grande Bosque	Sandia Pueblo	H*
Middle Rio Grande Bosque	Santa Ana Pueblo	H*
Middle Rio Grande Bosque	Santo Domingo Pueblo	H*
Middle Rio Grande Bosque	Socorro	M
Middle Rio Grande Bosque	Valencia	H
Middle Rio Grande Bosque	Veguita	H
Mora	Chacon	H
Mora	Cleveland	H
Mora	Gascon	H
Mora	Guadalupita	H
Mora	Holman	H
Mora	La Cueva	M
Mora	Ledoux	H
Mora	Mora	H
Mora	Rainsville	M
Mora	Ocate	H
Mora	Ojo Feliz	M

COMMUNITY PROTECTION ZONES	COMMUNITY	RANKING
Otero	Bent	M
Otero	Cloudcroft	H
Otero	Cox Canyon	H
Otero	Dry Canyon	H
Otero	High Rolls	H
Otero	James Canyon	H
Otero	Mayhill	H
Otero	Mescalero Apache Res.	H*
Otero	Sacramento	H
Otero	Sixteen Springs	H
Otero	Sunspot	H
Otero	Timberon	H
Otero	Weed	H
Raton	Bartlett	H
Raton	Carisbrooke	L
Raton	Gardiner	M
Raton	Linwood	H
Raton	Pine Forest	H
Raton	Raton	M
Raton	Sugarite	H
Raton	Sugarite State Park	H
Northern Rio Arriba	Brazos	M
Northern Rio Arriba	Canones	M
Northern Rio Arriba	Ensenada	L
Northern Rio Arriba	La Puente	L
Northern Rio Arriba	Los Ojos	L
Northern Rio Arriba	Plaza Blanca	L
Northern Rio Arriba	Ponderosa Estates	H
Northern Rio Arriba	Rutherford	L
Northern Rio Arriba	Tierra Amarilla	L
Greater Ruidoso Area	Alto	H
Greater Ruidoso Area	Angus	H
Greater Ruidoso Area	Bonito	H
Greater Ruidoso Area	Carrizo Canyon	H*
Greater Ruidoso Area	Cedar Creek	H
Greater Ruidoso Area	Eagle Creek	H
Greater Ruidoso Area	Gavilan Canyon	H
Greater Ruidoso Area	Loma Grande	H
Greater Ruidoso Area	Ranches of Sonterra	H
Greater Ruidoso Area	Ruidoso	H
Greater Ruidoso Area	Ruidoso Downs	H
Greater Ruidoso Area	Sierra Vista	H
Greater Ruidoso Area	Sun Valley	H
Greater Ruidoso Area	Villa Madonna	H

COMMUNITY PROTECTION ZONES	COMMUNITY	RANKING
Western San Miguel	Bernal	M
Western San Miguel	Canoncito	H
Western San Miguel	Cedar Hill	L
Western San Miguel	East Las Vegas	L
Western San Miguel	El Porvenir	H
Western San Miguel	Gabaldon	M
Western San Miguel	Gallinas	H
Western San Miguel	Ilfeld	H
Western San Miguel	Las Vegas	L
Western San Miguel	La Manga	M
Western San Miguel	Manuelitas	H
Western San Miguel	Mineral Hill	H
Western San Miguel	Montezuma	H
Western San Miguel	North San Ysidro	H
Western San Miguel	Pecos	H
Western San Miguel	Pendaries Village	H
Western San Miguel	Rociada	H
Western San Miguel	Romeroville	H
Western San Miguel	Rowe	H
Western San Miguel	San Antonio	M
Western San Miguel	San Miguel	L
Western San Miguel	Sapello	H
Western San Miguel	Sheridan	H
Western San Miguel	Tecolote	M
Western San Miguel	Tererro	H
Western San Miguel	Tres Lagunas	H
Western San Miguel	Upper Colonias	H
Western San Miguel	Upper Rociada	H
Western San Miguel	Villaneuva	L
Western San Miguel	Winsor Creek	H
Sandia/Manzano Mts.	Cedar Crest	H
Sandia/Manzano Mts.	Chilili	H
Sandia/Manzano Mts.	Manzano	H
Sandia/Manzano Mts.	Mountainair	M
Sandia/Manzano Mts.	Sandia Park	H
Sandia/Manzano Mts.	Sedillo	M
Sandia/Manzano Mts.	Tajique	H
Sandia/Manzano Mts.	Tijeras	H
Sandia/Manzano Mts.	Torreon	H

COMMUNITY PROTECTION ZONES	COMMUNITY	RANKING
Santa Fe County	Canada de los Alamos	H
Santa Fe County	Chupadero	M
Santa Fe County	Cundiyo	M
Santa Fe County	Glorieta	H
Santa Fe County	Hyde Park Estates	H
Santa Fe County	Hyde State Park	H
Santa Fe County	La Cueva	H
Santa Fe County	La Puebla	M
Santa Fe County	Nambe	M
Santa Fe County	Nambe Pueblo	M*
Santa Fe County	Pojoaque	L
Santa Fe County	Santa Fe	H
Santa Fe County	Seton Village	H
Santa Fe County	Tesuque Pueblo	H*
Santa Fe County	Tesuque	H
Zuni Mountains	Bluewater	M
Zuni Mountains	El Morro	L
Zuni Mountains	Fort Wingate	M
Zuni Mountains	Lobo Canyon (Grants)	M
Zuni Mountains	McGaffey	H
Zuni Mountains	Milan	L
Zuni Mountains	Page	L
Zuni Mountains	Pinehaven	M
Zuni Mountains	Ramah	M

APPENDIX 1
Southwest Region BIA ranking of tribal Communities at Risk

Federal Register Tribal Community	Priority	Included in State Risk Assessment?
Carrizo	H	No
Cochiti Pueblo	H	Yes
Dulce	H	No
Elk	H	No
Fort Wingate	H	No
Isleta Pueblo	H	Yes
Jemez Pueblo	H	No
Mescalero	H	Yes
Mount Taylor Game Ranch	H	No
Nambe Pueblo	M	Yes
Paguate	M	No
Pescado	L	No
Picuris Pueblo	H	No
Pine Hill	H	No
Pojoaque Pueblo	M	No
Acoma Pueblo	H	No
Laguna Pueblo	H	No
San Felipe Pueblo	H	Yes
San Ildefonso Pueblo	H	No
San Juan Pueblo	H	Yes
Sandia Pueblo	H	Yes
Santa Ana Pueblo	H	Yes
Santa Clara Pueblo	H	Yes
Santo Domingo Pueblo	H	Yes
Tamaya	M	No
Taos Pueblo	H	Yes
Tesuque Pueblo	H	Yes
Three Rivers	H	No
Whitetail	H	No
Zia Pueblo	H	No
Zuni Pueblo	H	No

APPENDIX 2

Community Wildfire Protection Plan¹ Summary and Checklist

Step One: Convene Decision Makers

- Form a core team made up of representatives from the appropriate local governments, local fire authority, and state agency responsible for forest management.

Step Two: Engage Interested Parties

- Contact and encourage active involvement in plan development from a broad range of interested organizations and stakeholders.
- Identify and engage local representatives of the USFS and BLM.
- Contact and involve other land management agencies as appropriate.

Step Three: Establish a Community Base Map

- Work with partners to establish a baseline map of the community that defines the community's WUI and displays inhabited areas at risk, forested areas that contain critical human infrastructure, and forest areas at risk for large-scale fire disturbance.

Step Four: Identify Problems to Be Addressed

- Work with partners to identify problems to be addressed, including fuel hazards; risk of wildfire occurrence; structural ignitability; local preparedness capability; and location of homes, businesses, essential infrastructure and other community values at risk.
- This "community risk assessment" can be simple or complex depending on the resources available to the community and partners.

Step Five: Establish Community Priorities and Recommendations

- Use the base map and community risk assessment to facilitate a collaborative community discussion that leads to the identification of local priorities for fuel treatment, reducing structural ignitability, and improving fire response capability.
- Clearly indicate whether priority projects are directly related to protection of communities and essential infrastructure or to reducing wildfire risks to other community values.

Step Six: Develop an Action Plan and Assessment Strategy

- Consider developing a detailed implementation strategy to accompany the CWPP, as well as a monitoring plan that will ensure its long-term success.

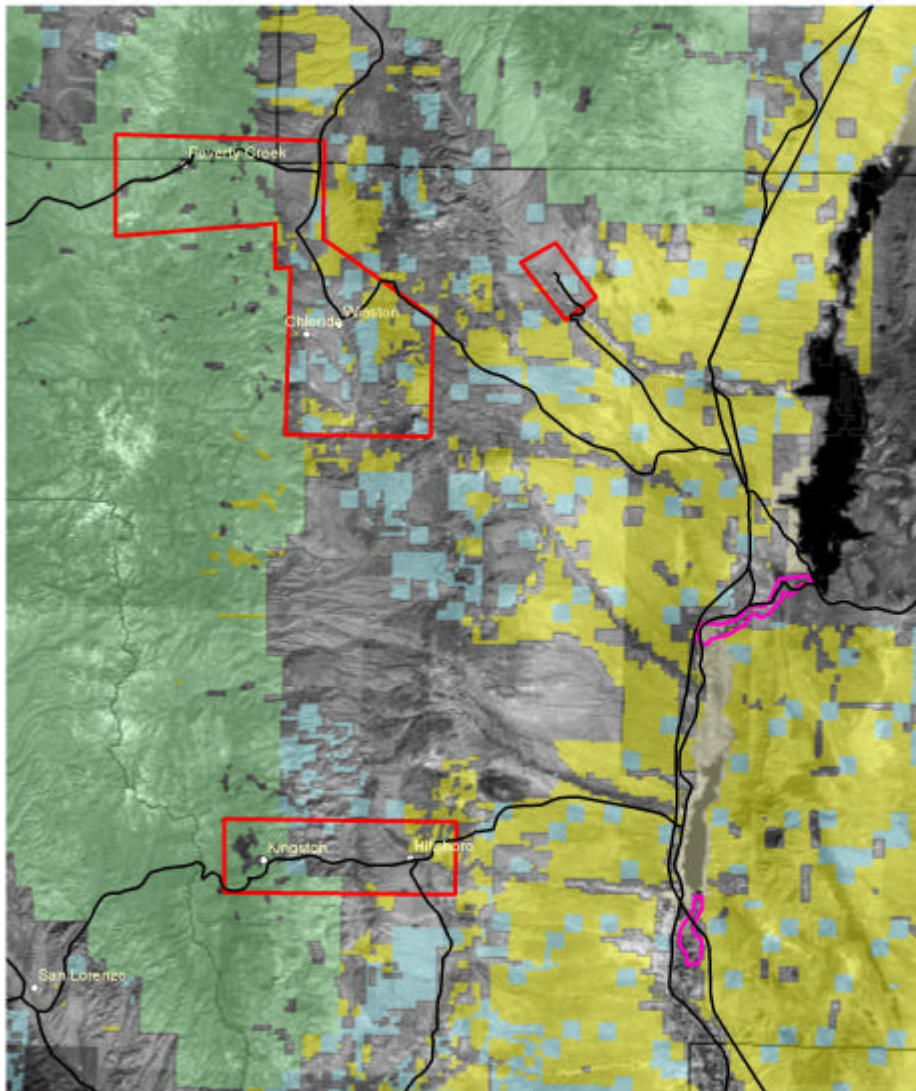
Step Seven: Complete the Community Wildfire Protection Plan

- Consider the CWPP complete for the year and date stamp the document.
- Communicate the results to the community and partners.
- Collect information to update the plan for revision the following year.

¹ This checklist was adapted from the publication "Preparing a Community Wildfire Protection Plan: A handbook for Wildland-Urban Interface Communities" that can be downloaded from www.safnet.org. The checklist was modified by the New Mexico Fire Planning Task Force for use in New Mexico.

APPENDIX 3
New Mexico
Community Protection Zone Maps

Black Range	Mora County
Catron County	Otero County
Colfax/Taos	Raton
Espanola Bosque	Northern Rio Arriba County
Grant County	Greater Ruidoso Area
Greater Jemez	Western San Miguel County
Los Alamos	Sandia/Manzano Mountains
Magdalena Area	Santa Fe County
Middle Rio Grande Bosque	Zuni Mountains



BLACK RANGE

Legend

○ CITIES AND TOWNS INCLUDED IN CWP ZONES

□ Hazard Fuel Areas

■ BUREAU OF LAND MANAGEMENT

■ BUREAU OF RECLAMATION

■ DEPARTMENT OF THE ARMY

■ DEPARTMENT OF DEFENSE

■ DEPARTMENT OF ENERGY

■ US FOREST SERVICE

■ US FISH AND WILDLIFE SERVICE

■ TRIBAL OR PUEBLO

■ NATIONAL PARK SERVICE

□ PRIVATE

□ STATE

■ STATE GAME AND FISH

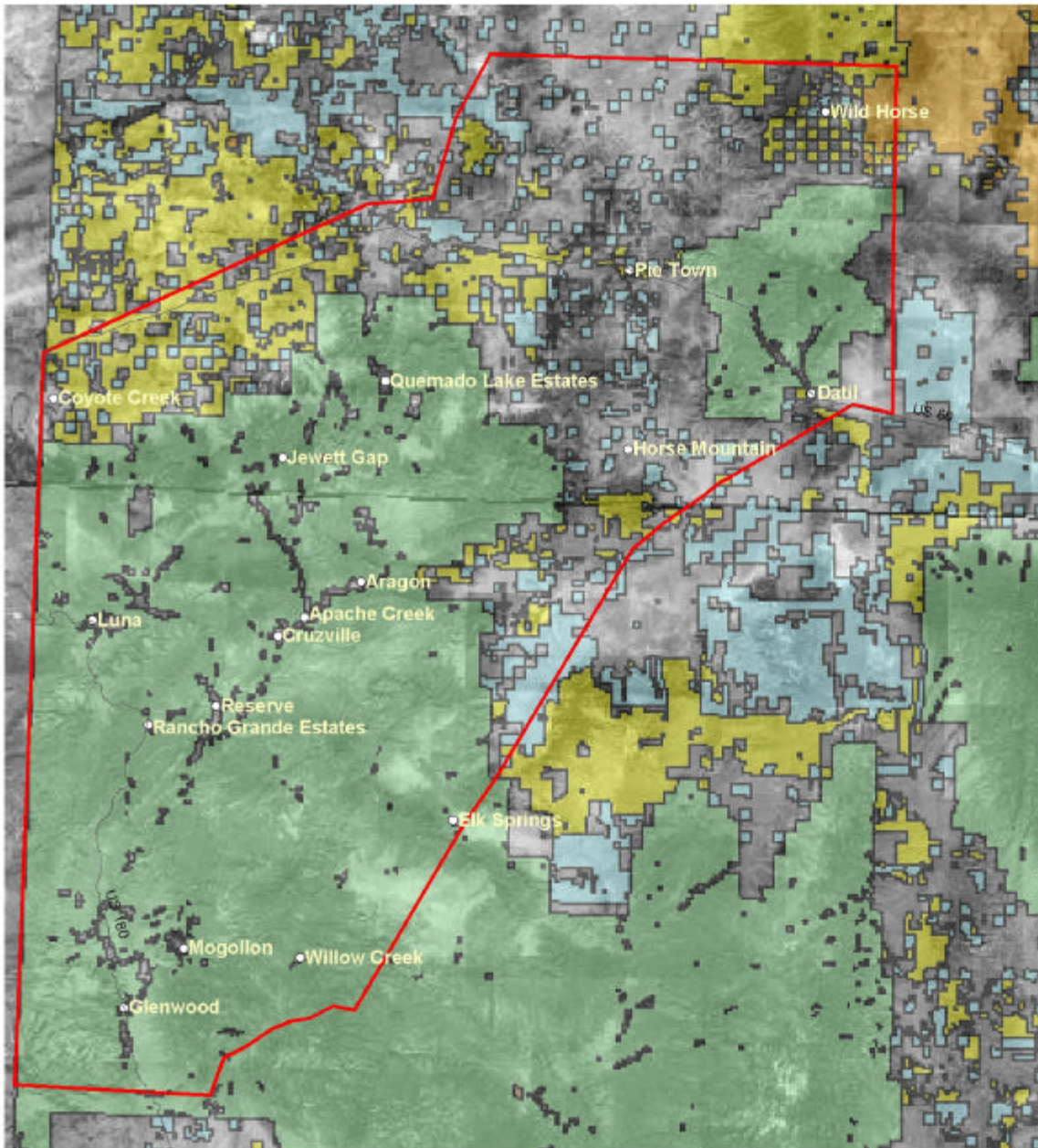
■ STATE PARKS

— Interstates and US Highways

— Interstates and US Highways

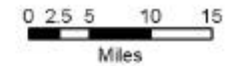


Datum: NAD83 Projection: UTM, Zone 13N
 Base data from NM RGIS Clearinghouse or derived by NM Forestry.
 No warranties are made regarding the accuracy of this data.
 Produced by NM EMNRD Forestry Division GIS
 File: Feb 24, 2006 11:39:15 AM, Copyright NMSP



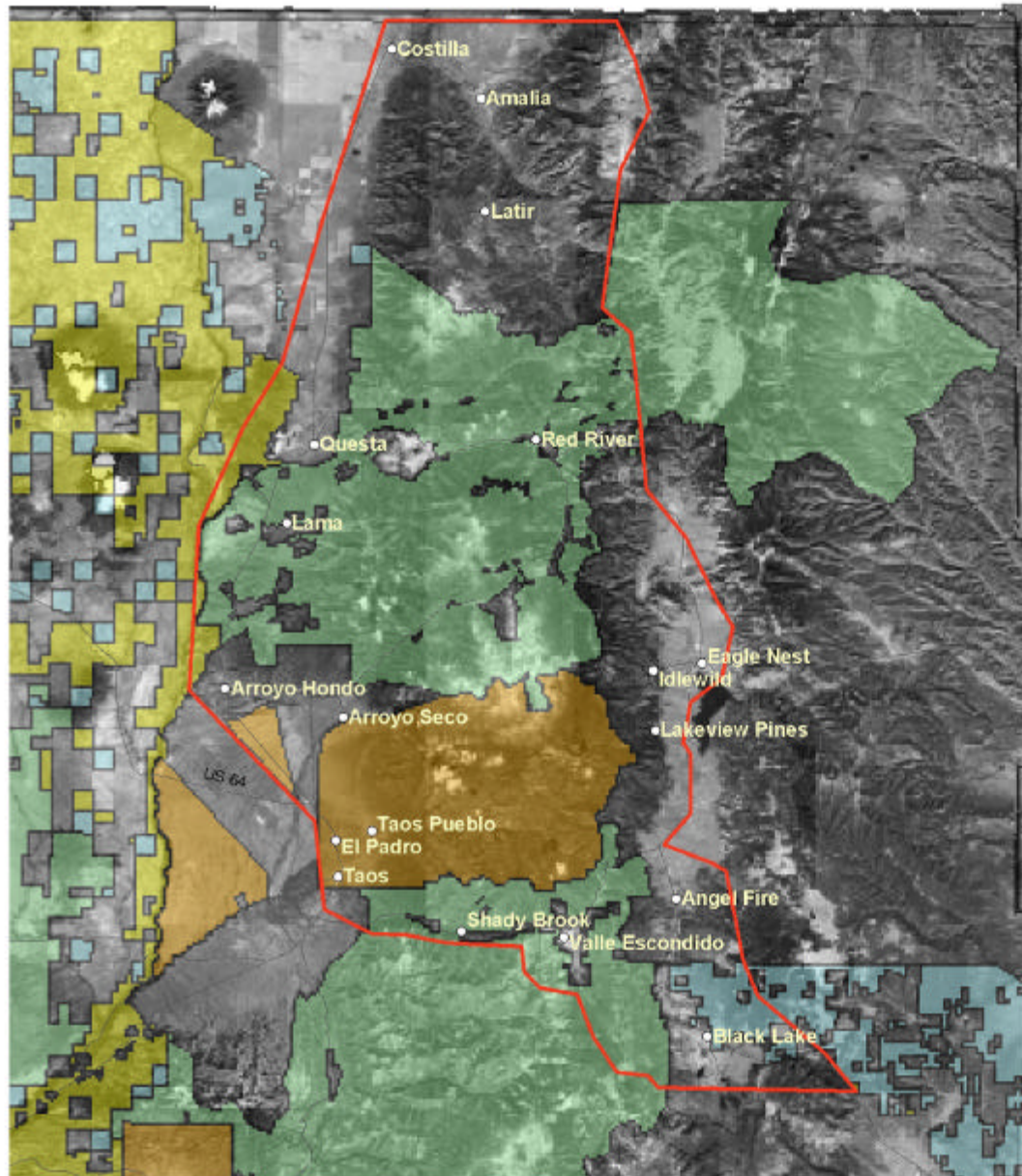
CATRON COUNTY

- CITIES AND TOWNS INCLUDED IN CWP ZONES
- BUREAU OF LAND MANAGEMENT
- BUREAU OF RECLAMATION
- DEPARTMENT OF THE ARMY
- DEPARTMENT OF DEFENSE
- DEPARTMENT OF ENERGY
- US FOREST SERVICE
- US FISH AND WILDLIFE SERVICE
- TRIBAL OR PUEBLO
- NATIONAL PARK SERVICE
- PRIVATE
- STATE
- STATE GAME AND FISH
- STATE PARKS



Datum: NAD83 Projection: UTM, Zone 13N
 Base data from NM RGIS Clearinghouse or
 derived by NM Forestry. No warranties are
 made regarding the accuracy of this data.
 Produced by NM EMNRD Forestry Division GIS

09/09/2003



COLFAX / TAOS

- CITIES AND TOWNS INCLUDED IN CWP ZONES
- BUREAU OF LAND MANAGEMENT
- BUREAU OF RECLAMATION
- DEPARTMENT OF THE ARMY
- DEPARTMENT OF DEFENSE
- DEPARTMENT OF ENERGY
- US FOREST SERVICE
- US FISH AND WILDLIFE SERVICE
- TRIBAL OR PUEBLO
- NATIONAL PARK SERVICE
- PRIVATE
- STATE
- STATE GAME AND FISH
- STATE PARKS

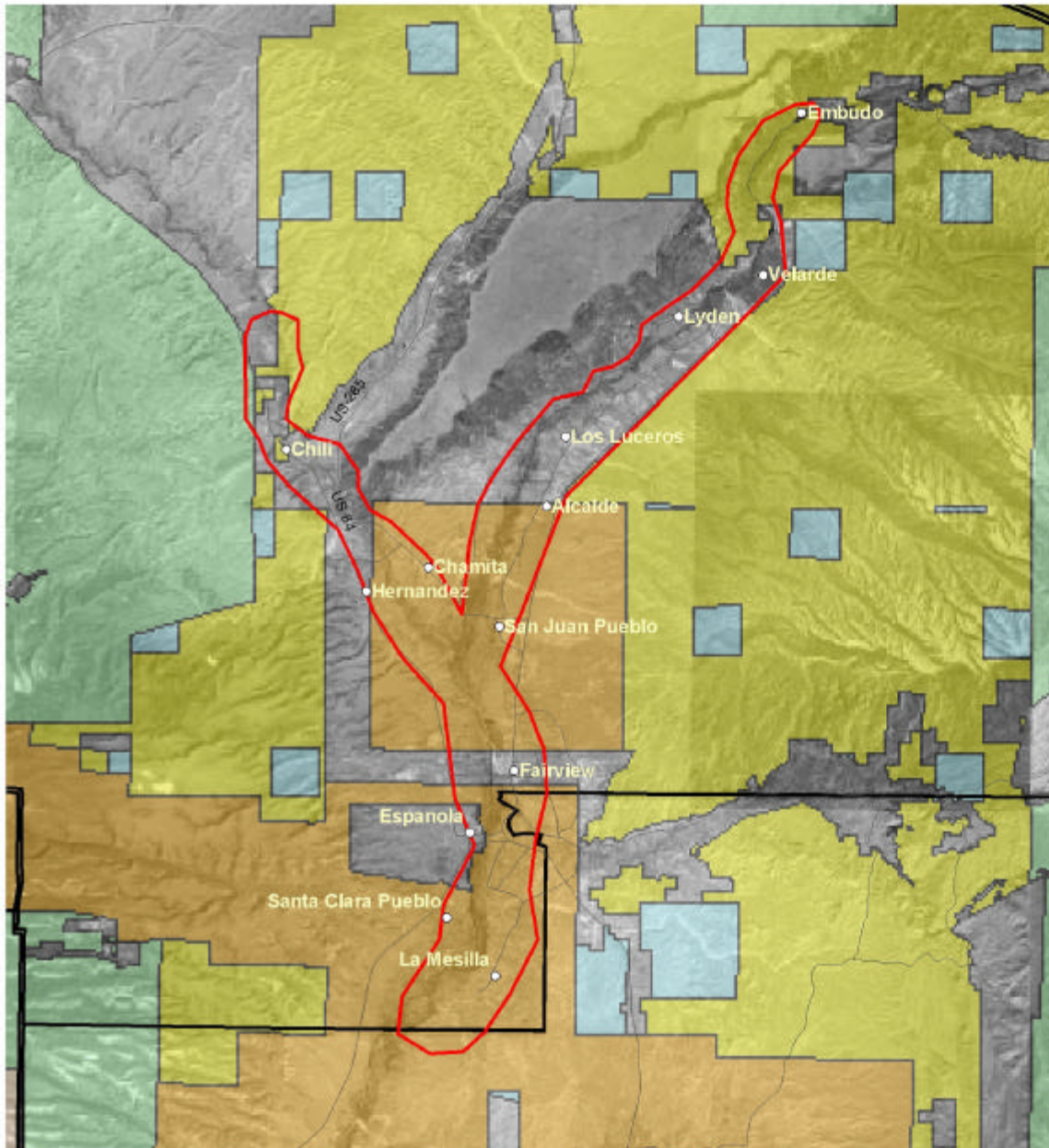


Vicinity



Datum: NAD83 Projection: UTM, Zone 13N
 Base data from NM RGIS Clearinghouse or
 derived by NM Forestry. No warranties are
 made regarding the accuracy of this data.
 Produced by NM EMNRD Forestry Division GIS

09/22/2003



ESPANOLA BOSQUE

- CITIES AND TOWNS INCLUDED IN CWP ZONES
- BUREAU OF LAND MANAGEMENT
- BUREAU OF RECLAMATION
- DEPARTMENT OF THE ARMY
- DEPARTMENT OF DEFENSE
- DEPARTMENT OF ENERGY
- US FOREST SERVICE
- US FISH AND WILDLIFE SERVICE
- TRIBAL OR PUEBLO
- NATIONAL PARK SERVICE
- PRIVATE
- STATE
- STATE GAME AND FISH
- STATE PARKS

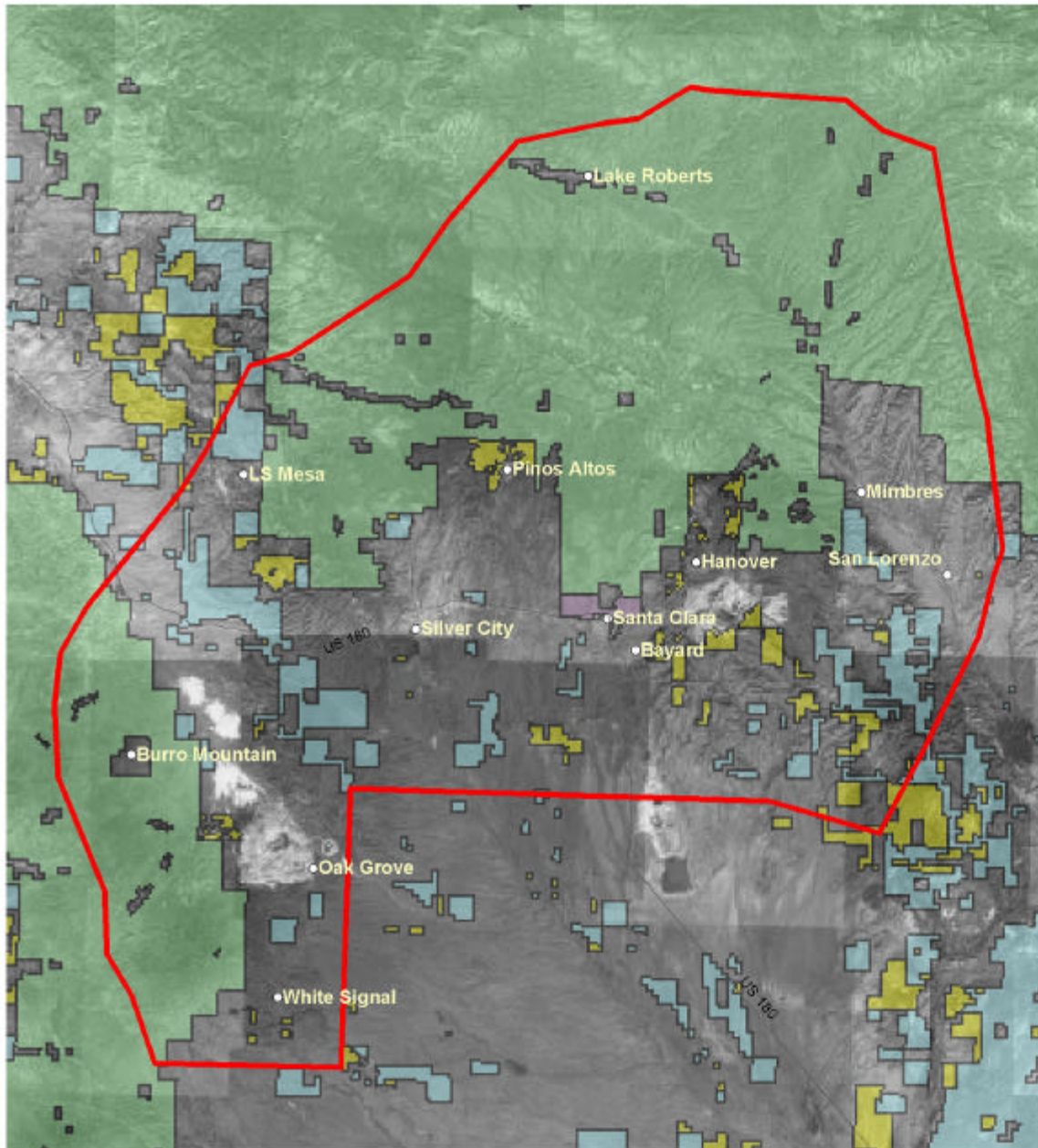


Vicinity



Datum: NAD83 Projection: UTM, Zone 13N
 Base data from NM RGIS Clearinghouse or
 derived by NM Forestry. No warranties are
 made regarding the accuracy of this data.
 Produced by NM EMNRD Forestry Division GIS

09/09/2003



GRANT COUNTY

- CITIES AND TOWNS INCLUDED IN CWP ZONES
- BUREAU OF LAND MANAGEMENT
- BUREAU OF RECLAMATION
- DEPARTMENT OF THE ARMY
- DEPARTMENT OF DEFENSE
- DEPARTMENT OF ENERGY
- US FOREST SERVICE
- US FISH AND WILDLIFE SERVICE
- TRIBAL OR PUEBLO
- NATIONAL PARK SERVICE
- PRIVATE
- STATE
- STATE GAME AND FISH
- STATE PARKS

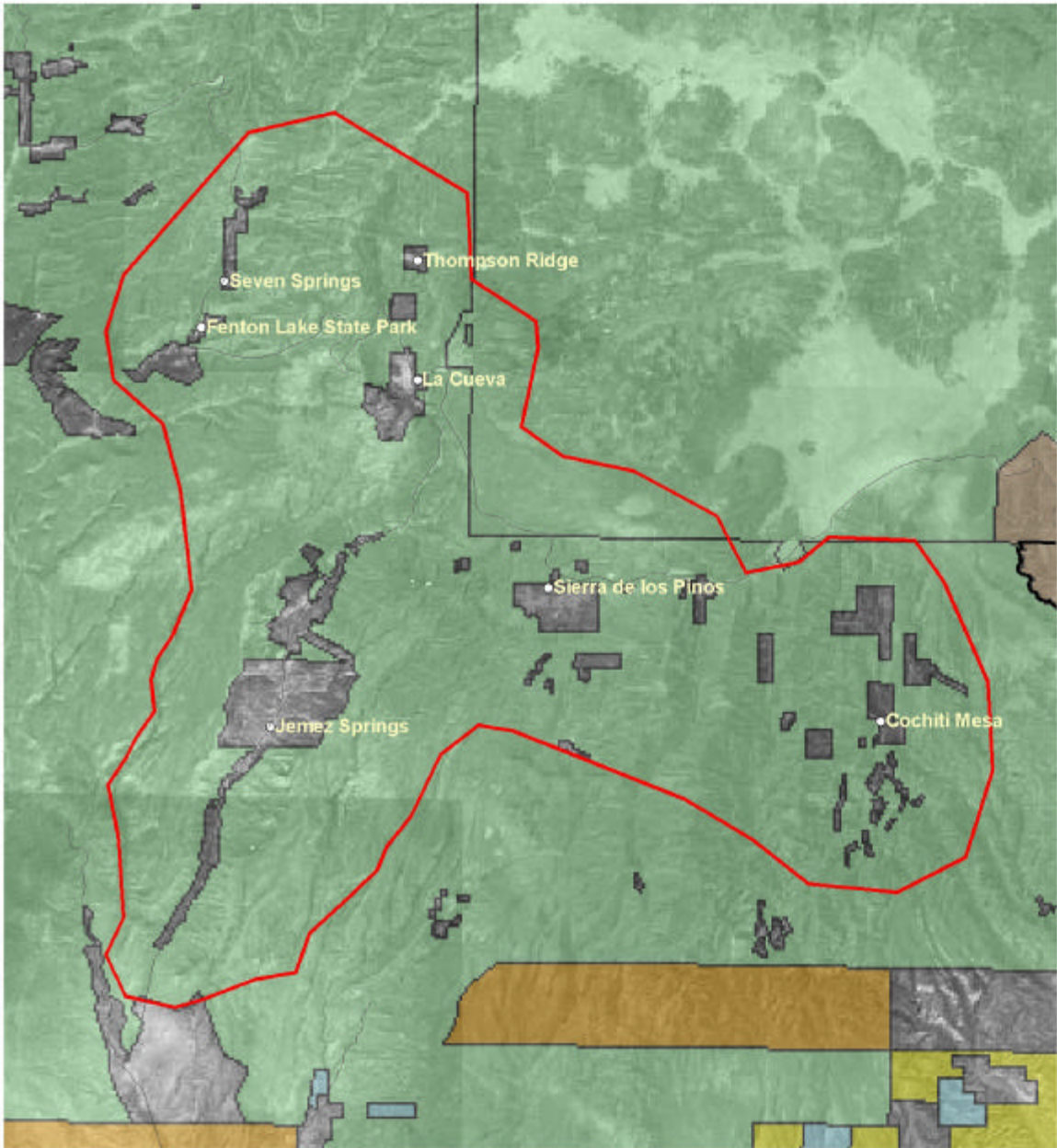


Vicinity



Datum: NAD83 Projection: UTM, Zone 13N
 Base data from NM RGIS Clearinghouse or
 derived by NM Forestry No warranties are
 made regarding the accuracy of this data.
 Produced by NM EMNRD Forestry Division GIS

09/09/2003



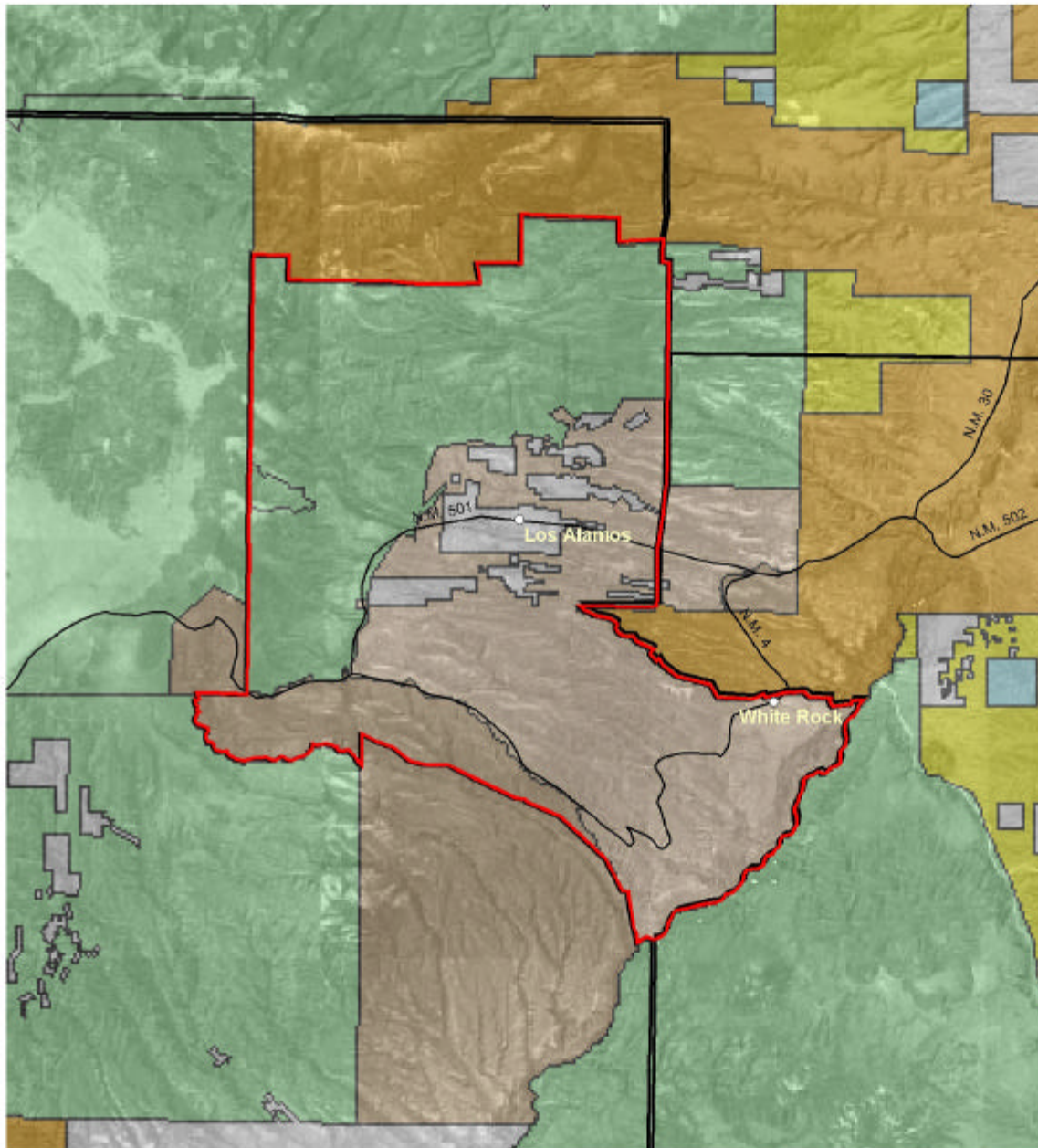
GREATER JEMEZ

- CITIES AND TOWNS INCLUDED IN CWP ZONES
- BUREAU OF LAND MANAGEMENT
- BUREAU OF RECLAMATION
- DEPARTMENT OF THE ARMY
- DEPARTMENT OF DEFENSE
- DEPARTMENT OF ENERGY
- US FOREST SERVICE
- US FISH AND WILDLIFE SERVICE
- TRIBAL OR PUEBLO
- NATIONAL PARK SERVICE
- PRIVATE
- STATE
- STATE GAME AND FISH
- STATE PARKS



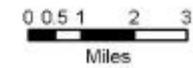
Datum: NAD83 Projection: UTM, Zone 13N
 Base data from NM RGIS Clearinghouse or
 derived by NM Forestry. No warranties are
 made regarding the accuracy of this data.
 Produced by NM EMNRD Forestry Division GIS

09/09/2003



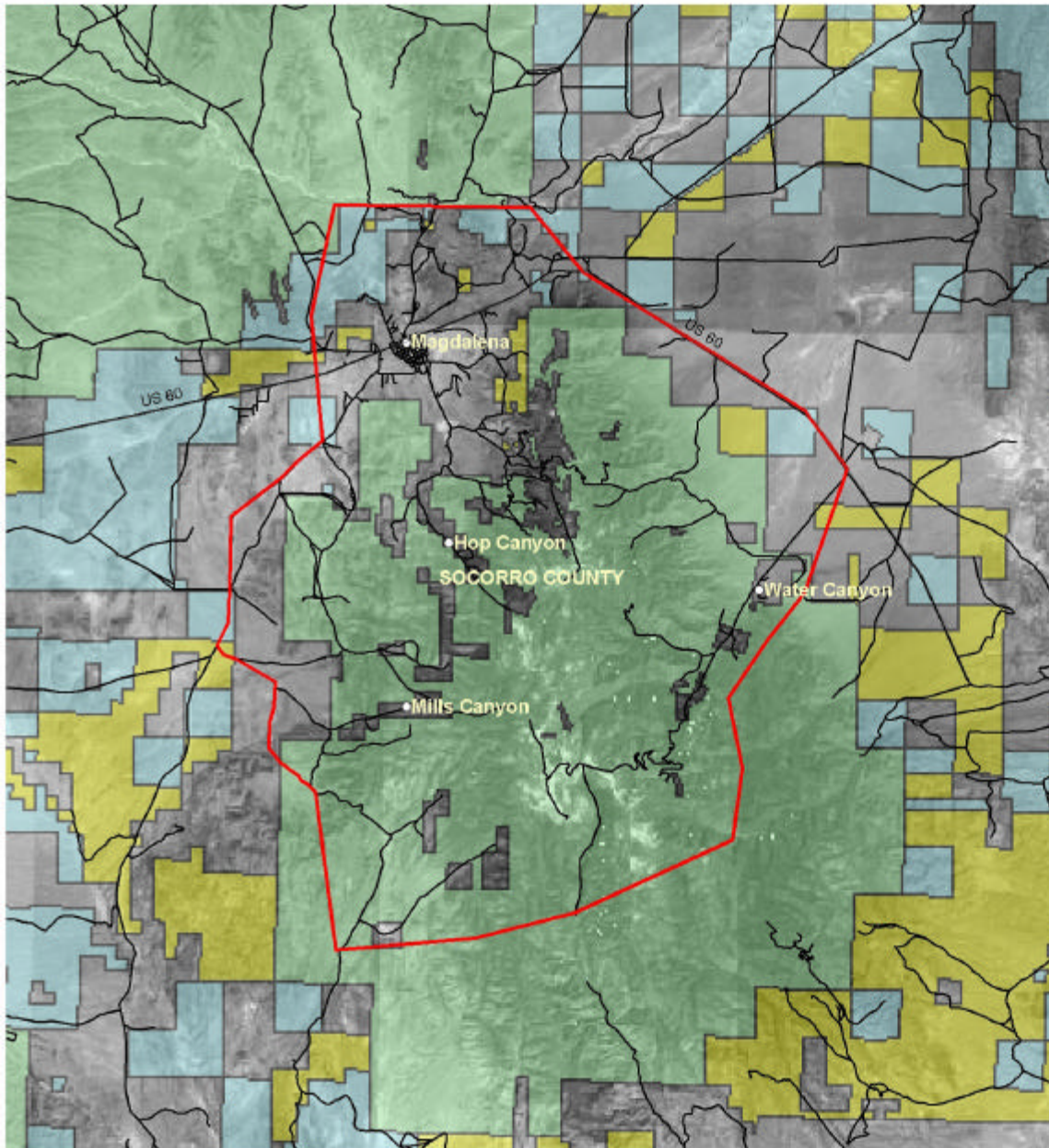
LOS ALAMOS

- CITIES AND TOWNS INCLUDED IN CWP ZONES
- BUREAU OF LAND MANAGEMENT
- BUREAU OF RECLAMATION
- DEPARTMENT OF THE ARMY
- DEPARTMENT OF DEFENSE
- DEPARTMENT OF ENERGY
- US FOREST SERVICE
- US FISH AND WILDLIFE SERVICE
- TRIBAL OR PUEBLO
- NATIONAL PARK SERVICE
- PRIVATE
- STATE
- STATE GAME AND FISH
- STATE PARKS



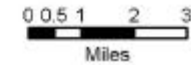
Datum: NAD83 Projection: UTM, Zone 13N
 Base data from NM RGIS Clearinghouse or
 derived by NM Forestry No warranties are
 made regarding the accuracy of this data.
 Produced by NM EMNRD Forestry Division GIS

09/05/2003



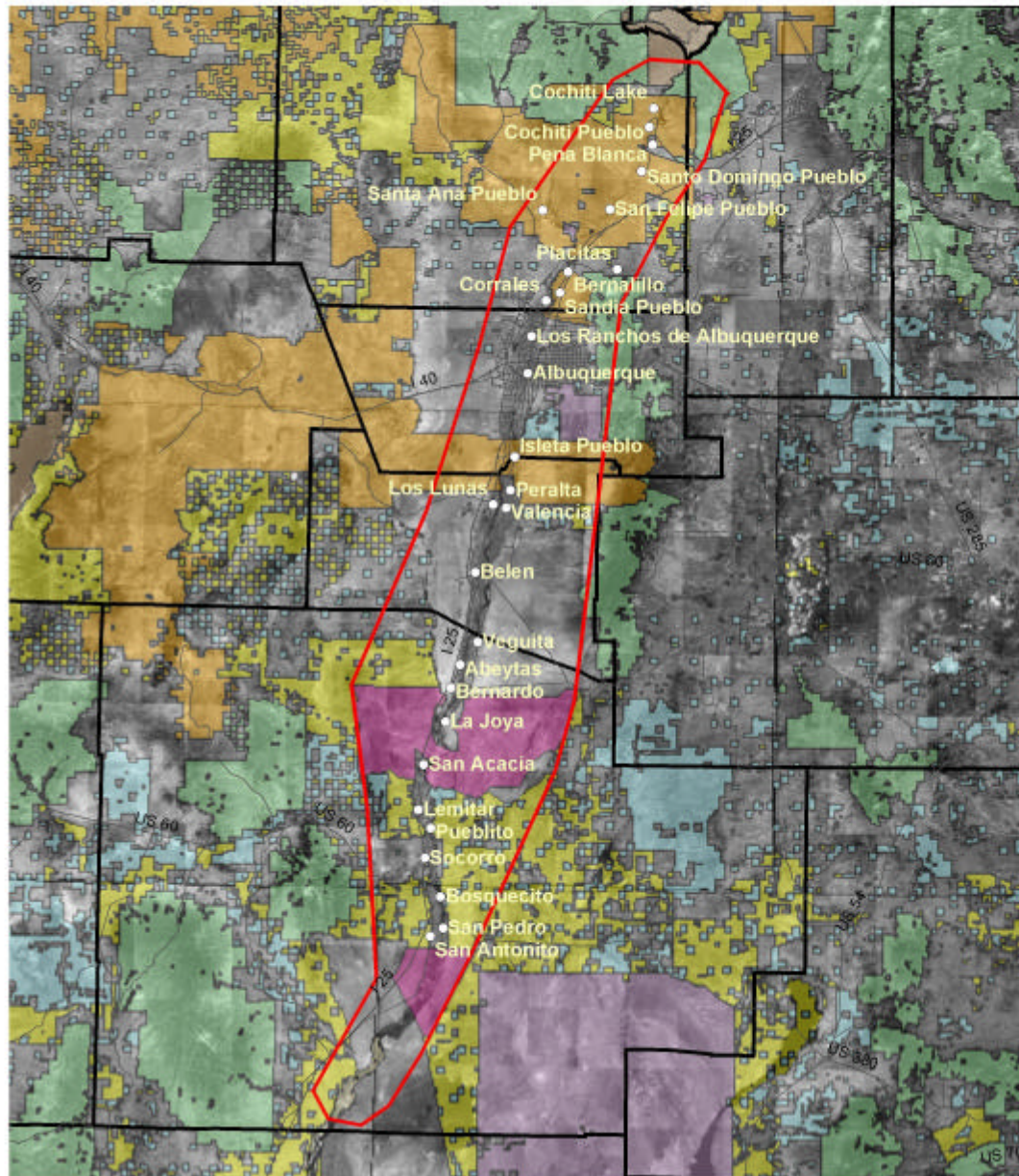
MAGDALENA AREA

- CITIES AND TOWNS INCLUDED IN CWP ZONES
- BUREAU OF LAND MANAGEMENT
- BUREAU OF RECLAMATION
- DEPARTMENT OF THE ARMY
- DEPARTMENT OF DEFENSE
- DEPARTMENT OF ENERGY
- US FOREST SERVICE
- US FISH AND WILDLIFE SERVICE
- TRIBAL OR PUEBLO
- NATIONAL PARK SERVICE
- PRIVATE
- STATE
- STATE GAME AND FISH
- STATE PARKS



Datum: NAD83 Projection: UTM, Zone 13N
 Base data from NM RGIS Clearinghouse or
 derived by NM Forestry. No warranties are
 made regarding the accuracy of this data.
 Produced by NM EMNRD Forestry Division GIS

09/09/2003



MIDDLE RIO GRANDE BOSQUE

Legend

- Cities and Towns included in CWP Zones
- BUREAU OF LAND MANAGEMENT
- BUREAU OF RECLAMATION
- DEPARTMENT OF THE ARMY
- DEPARTMENT OF DEFENSE
- DEPARTMENT OF ENERGY
- US FOREST SERVICE
- US FISH AND WILDLIFE SERVICE
- TRIBAL OR PUEBLO
- NATIONAL PARK SERVICE
- PRIVATE
- STATE
- STATE GAME AND FISH
- STATE PARKS

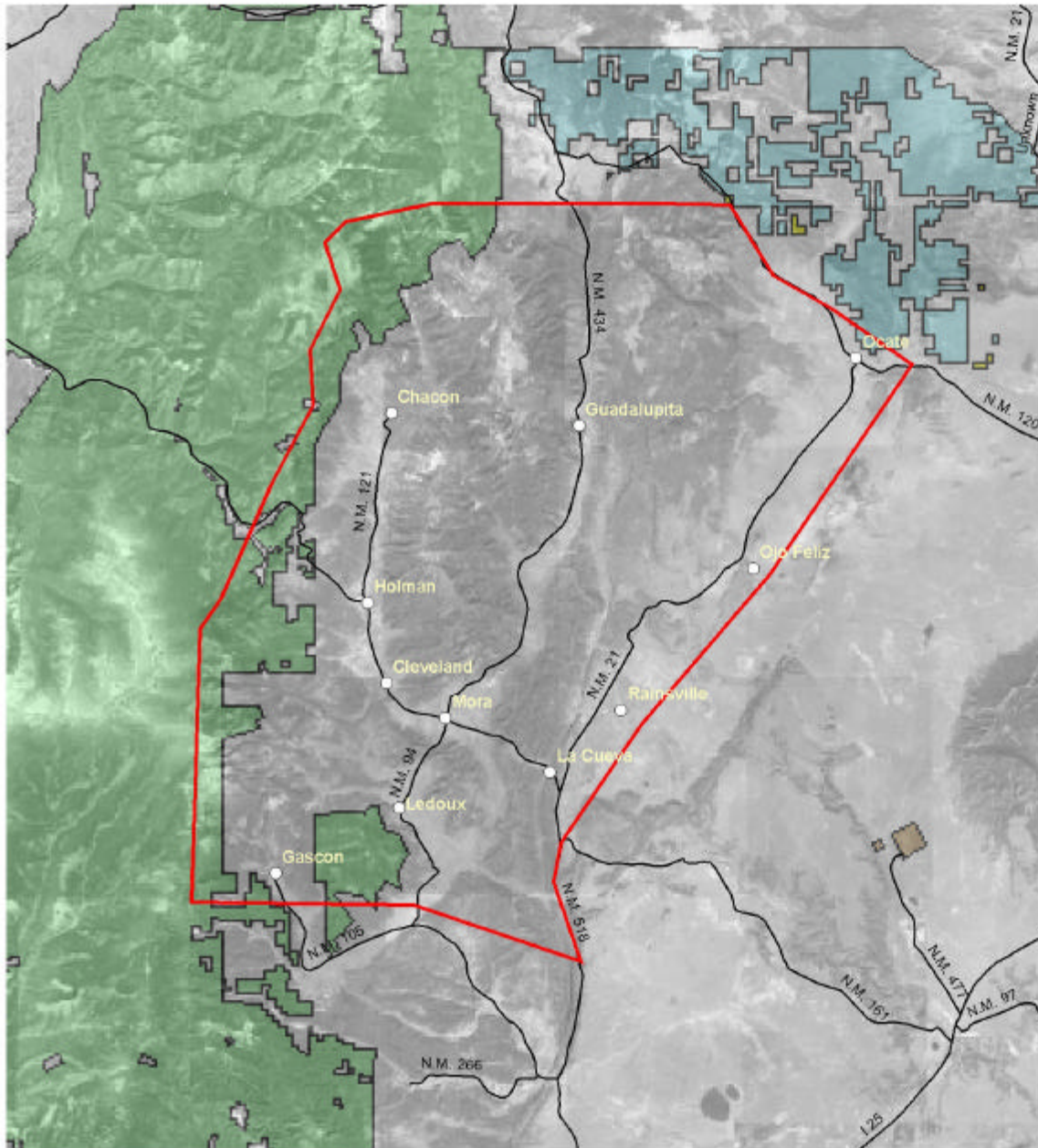


Vicinity



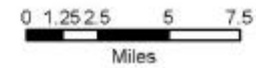
Datum: NAD83 Projection: UTM, Zone 13N
 Base data from NM RGIS Clearinghouse or derived by NM Forestry. No warranties are made regarding the accuracy of this data.
 Produced by NM EMNRD Forestry Division GIS

03/29/04



MORA COUNTY

- CITIES AND TOWNS INCLUDED IN CWP ZONES
- BUREAU OF LAND MANAGEMENT
- BUREAU OF RECLAMATION
- DEPARTMENT OF THE ARMY
- DEPARTMENT OF DEFENSE
- DEPARTMENT OF ENERGY
- US FOREST SERVICE
- US FISH AND WILDLIFE SERVICE
- TRIBAL OR PUEBLO
- NATIONAL PARK SERVICE
- PRIVATE
- STATE
- STATE GAME AND FISH
- STATE PARKS

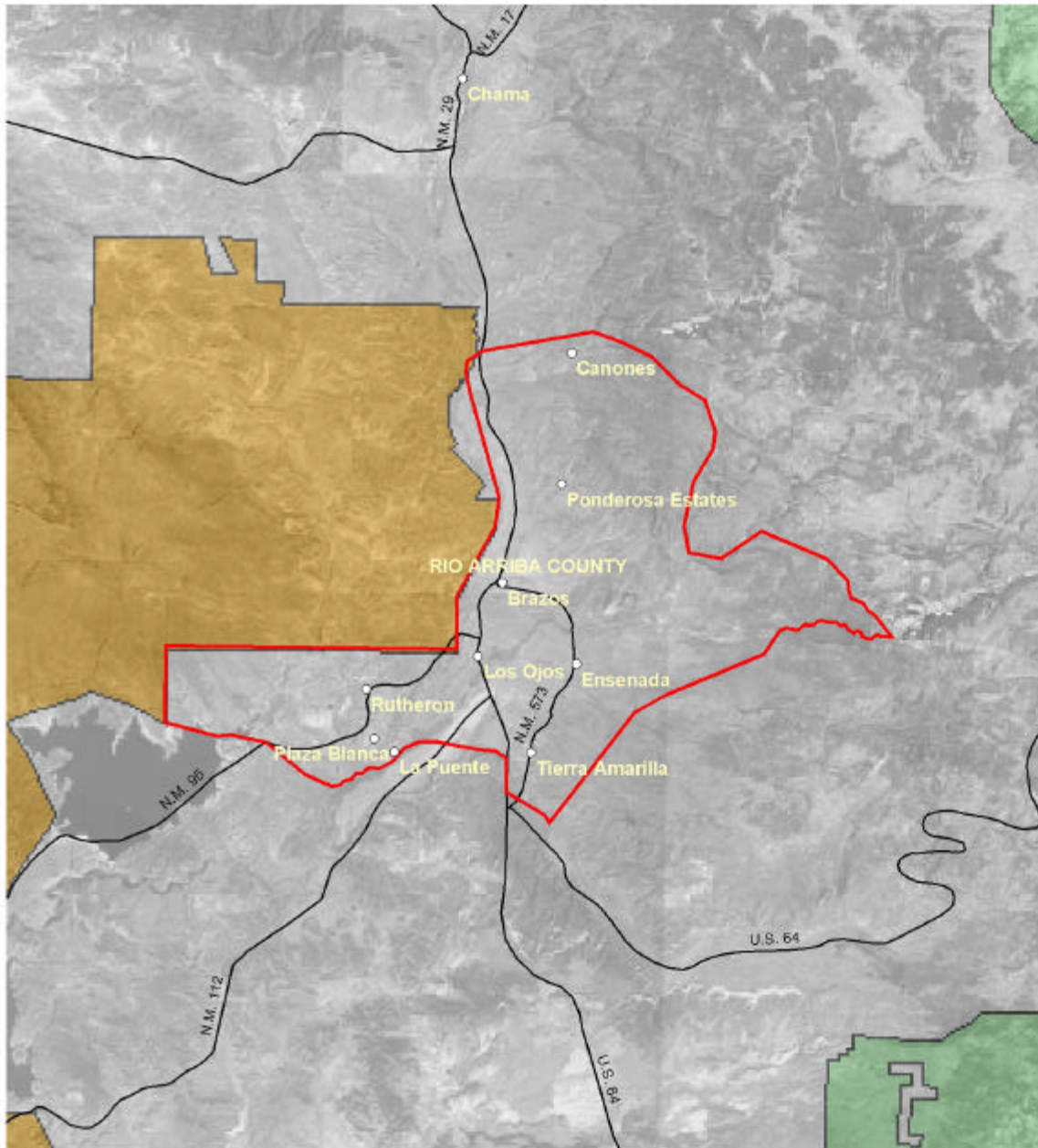


Vicinity



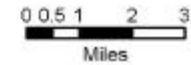
Datum: NAD83 Projection: UTM, Zone 13N
 Base data from NM RGIS Clearinghouse or
 derived by NM Forestry. No warranties are
 made regarding the accuracy of this data.
 Produced by NM EMNRD Forestry Division GIS

09/05/2003



NORTHERN RIO ARRIBA

- CITIES AND TOWNS INCLUDED IN CWP ZONES
- BUREAU OF LAND MANAGEMENT
- BUREAU OF RECLAMATION
- DEPARTMENT OF THE ARMY
- DEPARTMENT OF DEFENSE
- DEPARTMENT OF ENERGY
- US FOREST SERVICE
- US FISH AND WILDLIFE SERVICE
- TRIBAL OR PUEBLO
- NATIONAL PARK SERVICE
- PRIVATE
- STATE
- STATE GAME AND FISH
- STATE PARKS

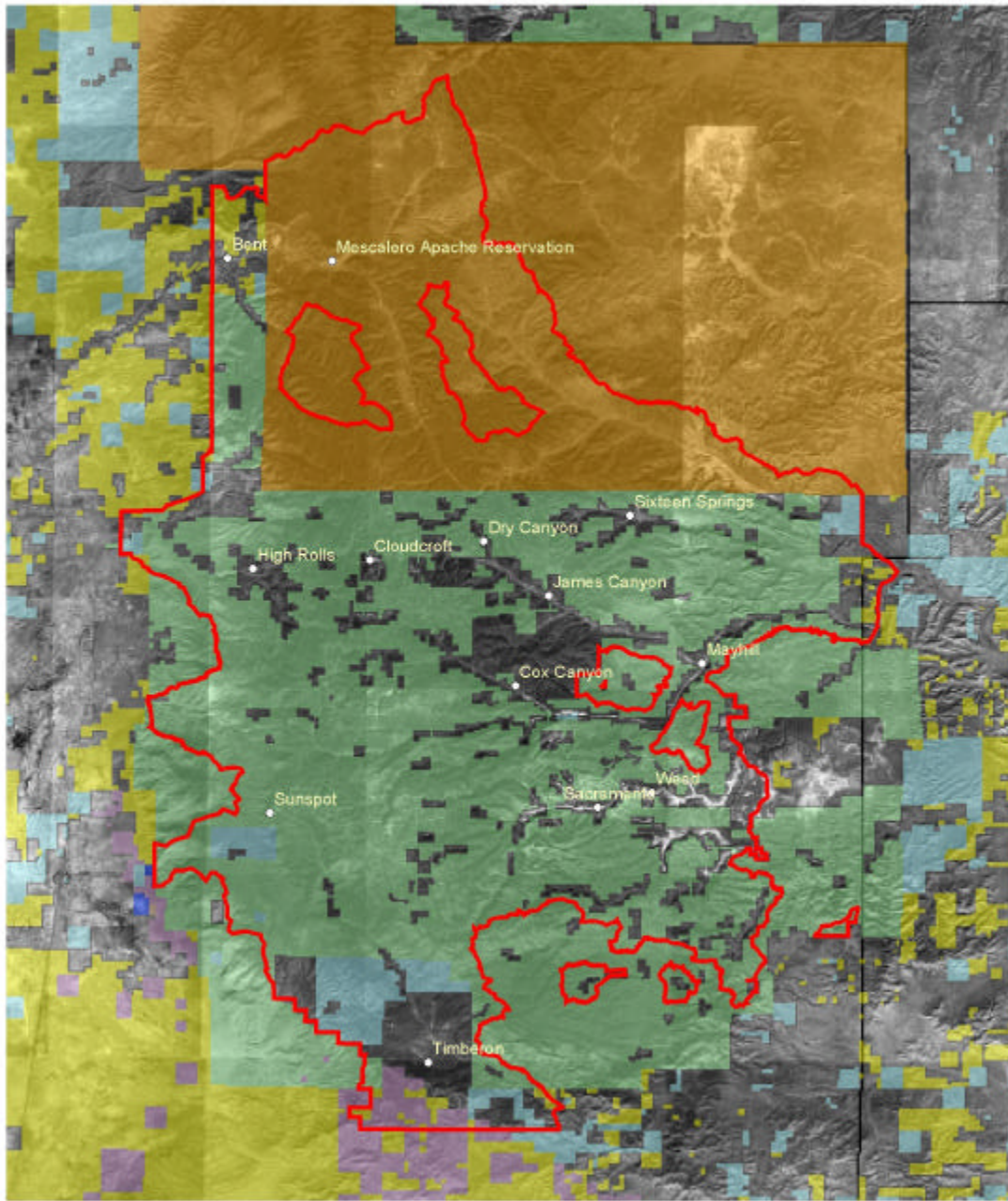


Vicinity



Datum: NAD83 Projection: UTM, Zone 13N
 Base data from NM RGIS Clearinghouse or
 derived by NM Forestry. No warranties are
 made regarding the accuracy of this data.
 Produced by NM EMNRD Forestry Division GIS

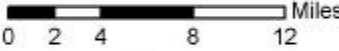
09/05/2003



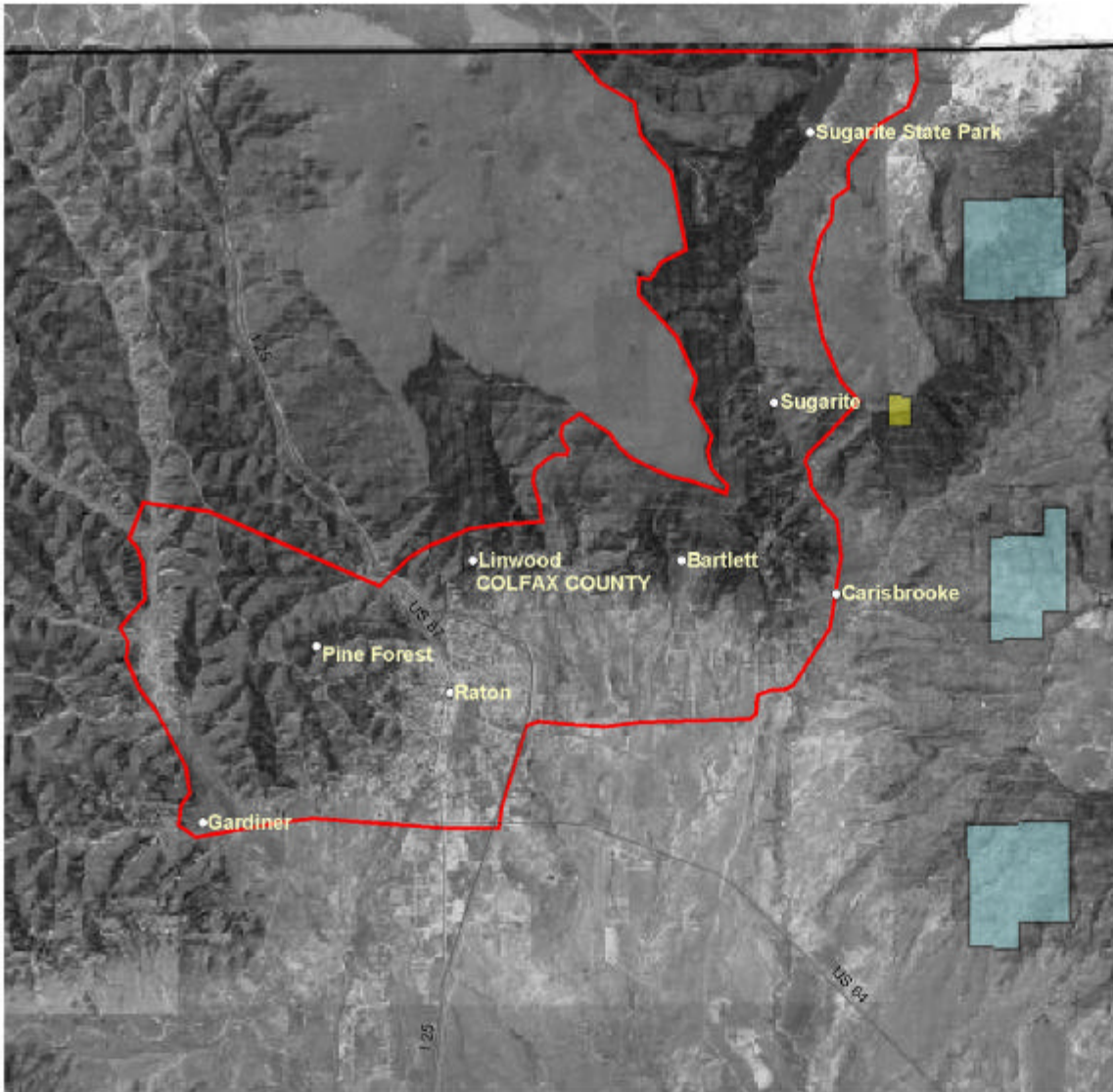
OTERO COUNTY

Legend

- CITIES AND TOWNS INCLUDED IN CWP ZONES
- BUREAU OF LAND MANAGEMENT
- BUREAU OF RECLAMATION
- DEPARTMENT OF THE ARMY
- DEPARTMENT OF DEFENSE
- DEPARTMENT OF ENERGY
- US FOREST SERVICE
- US FISH AND WILDLIFE SERVICE
- TRIBAL OR PUEBLO
- NATIONAL PARK SERVICE
- PRIVATE
- STATE
- STATE GAME AND FISH
- STATE PARKS

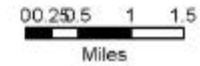


Datum: NAD83 Projection: UTM, Zone 13N
 Base data from NM RGIS Clearinghouse or derived by NM Forestry.
 No warranties are made regarding the accuracy of this data.
 Produced by NM EMNRD Forestry Division GIS
 File: Feb 24, 2005 11:30:15 AM, Copyright NM DF



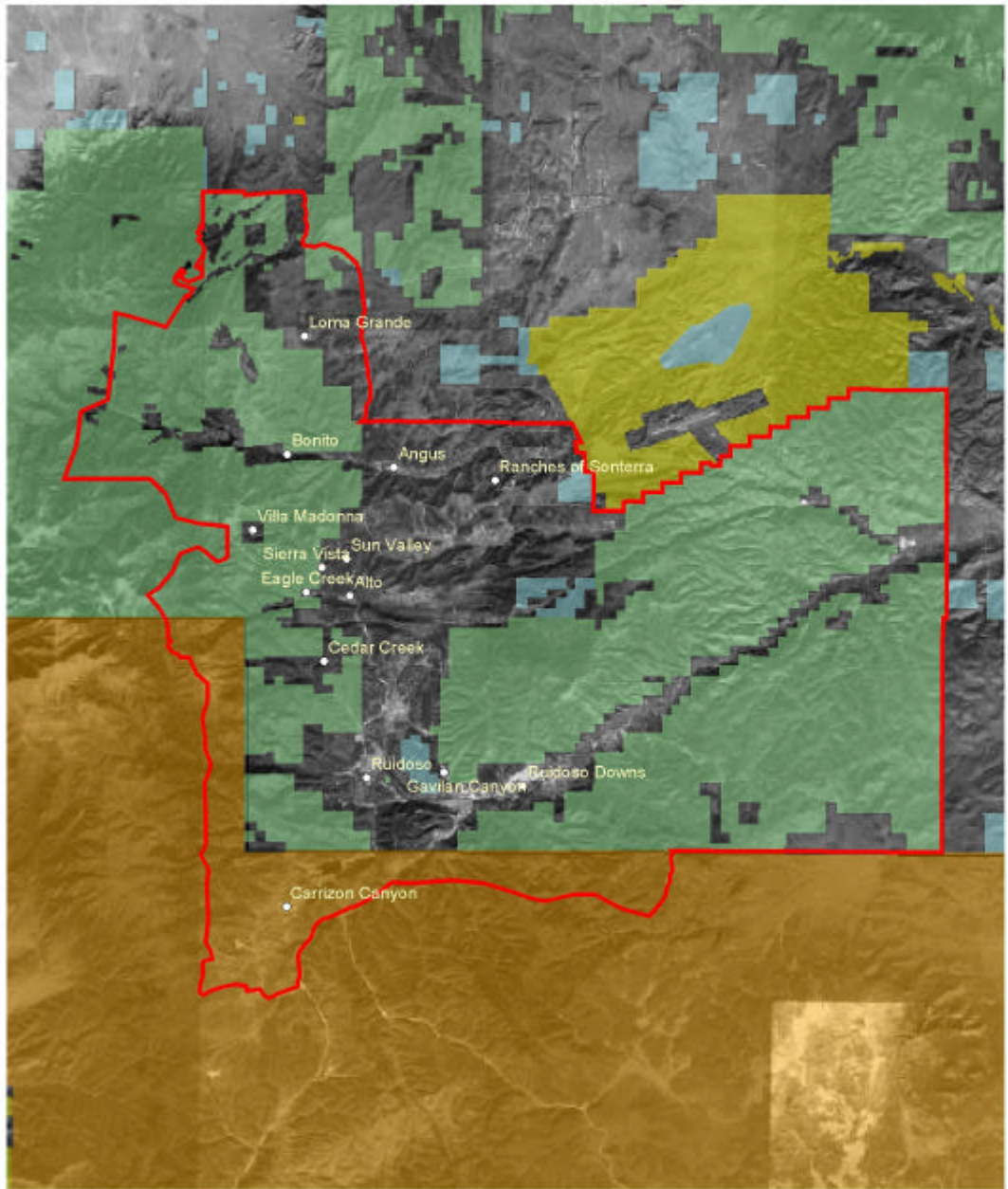
RATON AREA

- CITIES AND TOWNS INCLUDED IN CWP ZONES
- BUREAU OF LAND MANAGEMENT
- BUREAU OF RECLAMATION
- DEPARTMENT OF THE ARMY
- DEPARTMENT OF DEFENSE
- DEPARTMENT OF ENERGY
- US FOREST SERVICE
- US FISH AND WILDLIFE SERVICE
- TRIBAL OR PUEBLO
- NATIONAL PARK SERVICE
- PRIVATE
- STATE
- STATE GAME AND FISH
- STATE PARKS



Datum: NAD83 Projection: UTM, Zone 13N
 Base data from NM RGIS Clearinghouse or
 derived by NM Forestry. No warranties are
 made regarding the accuracy of this data.
 Produced by NM EMNRD Forestry Division GIS

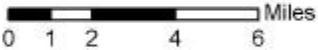
09/09/2003



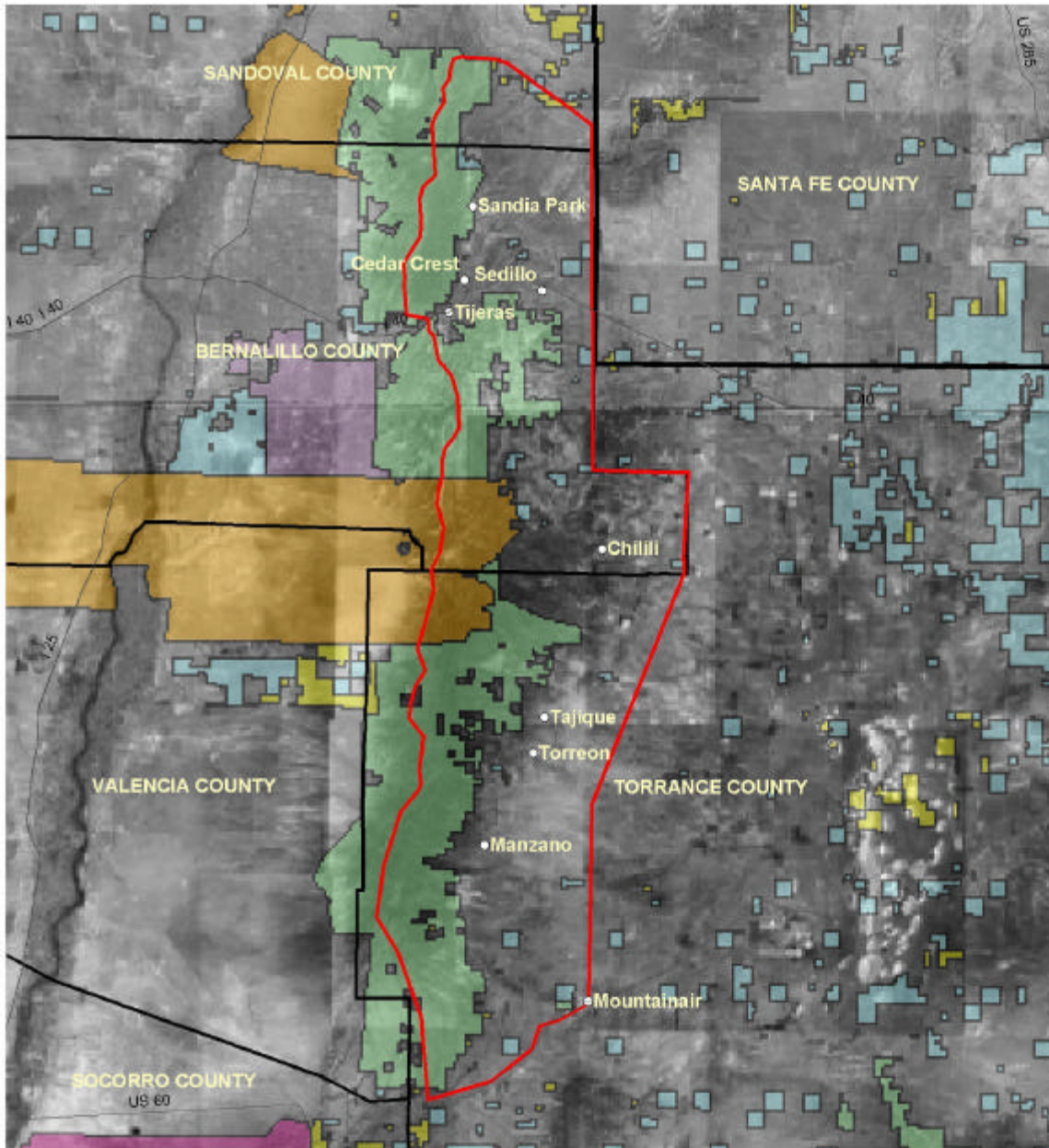
GREATER RUIDOSO AREA

Legend

- CITIES AND TOWNS INCLUDED IN CWP ZONES
- BUREAU OF LAND MANAGEMENT
- BUREAU OF RECLAMATION
- DEPARTMENT OF THE ARMY
- DEPARTMENT OF DEFENSE
- DEPARTMENT OF ENERGY
- US FOREST SERVICE
- US FISH AND WILDLIFE SERVICE
- TRIBAL OR PUEBLO
- NATIONAL PARK SERVICE
- PRIVATE
- STATE
- STATE GAME AND FISH
- STATE PARKS



Datum: NAD83 Projection: UTM, Zone 13N
 Base data from NM RGIS Clearinghouse or derived by NM Forestry.
 No warranties are made regarding the accuracy of this data.
 Produced by NM EMNRD Forestry Division GIS
 File: Feb 24, 2025 11:30:15 AM, Copyright NMSF



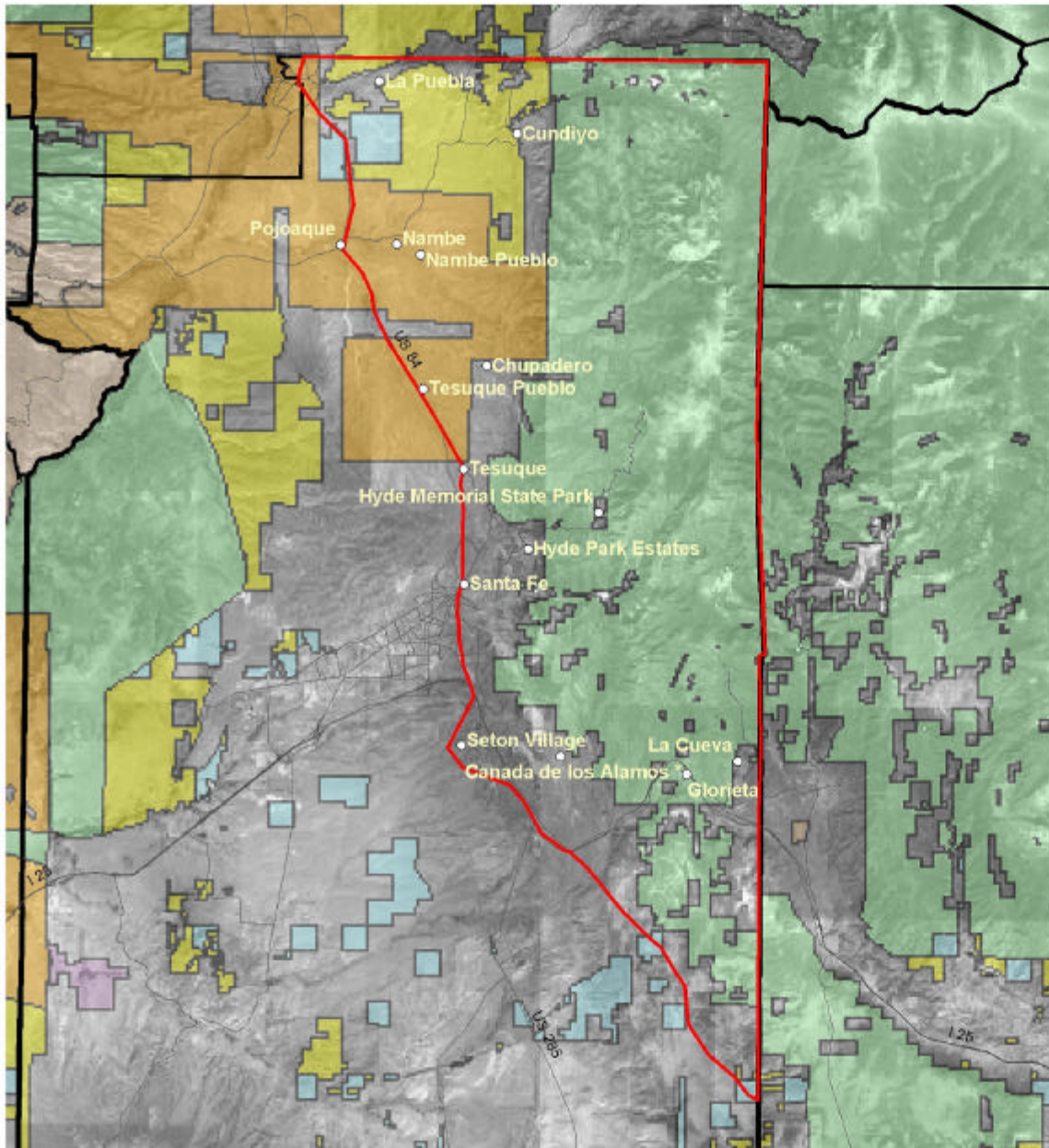
SANDIA / MANZANO MOUNTAINS

- CITIES AND TOWNS INCLUDED IN CWP ZONES
- BUREAU OF LAND MANAGEMENT
- BUREAU OF RECLAMATION
- DEPARTMENT OF THE ARMY
- DEPARTMENT OF DEFENSE
- DEPARTMENT OF ENERGY
- US FOREST SERVICE
- US FISH AND WILDLIFE SERVICE
- TRIBAL OR PUEBLO
- NATIONAL PARK SERVICE
- PRIVATE
- STATE
- STATE GAME AND FISH
- STATE PARKS



Datum: NAD83 Projection: UTM, Zone 13N
 Base data from NM RGIS Clearinghouse or
 derived by NM Forestry No warranties are
 made regarding the accuracy of this data.
 Produced by NM EMNRD Forestry Division GIS

09/09/2003



SANTA FE COUNTY

- CITIES AND TOWNS INCLUDED IN CWP ZONES
- BUREAU OF LAND MANAGEMENT
- BUREAU OF RECLAMATION
- DEPARTMENT OF THE ARMY
- DEPARTMENT OF DEFENSE
- DEPARTMENT OF ENERGY
- US FOREST SERVICE
- US FISH AND WILDLIFE SERVICE
- TRIBAL OR PUEBLO
- NATIONAL PARK SERVICE
- PRIVATE
- STATE
- STATE GAME AND FISH
- STATE PARKS

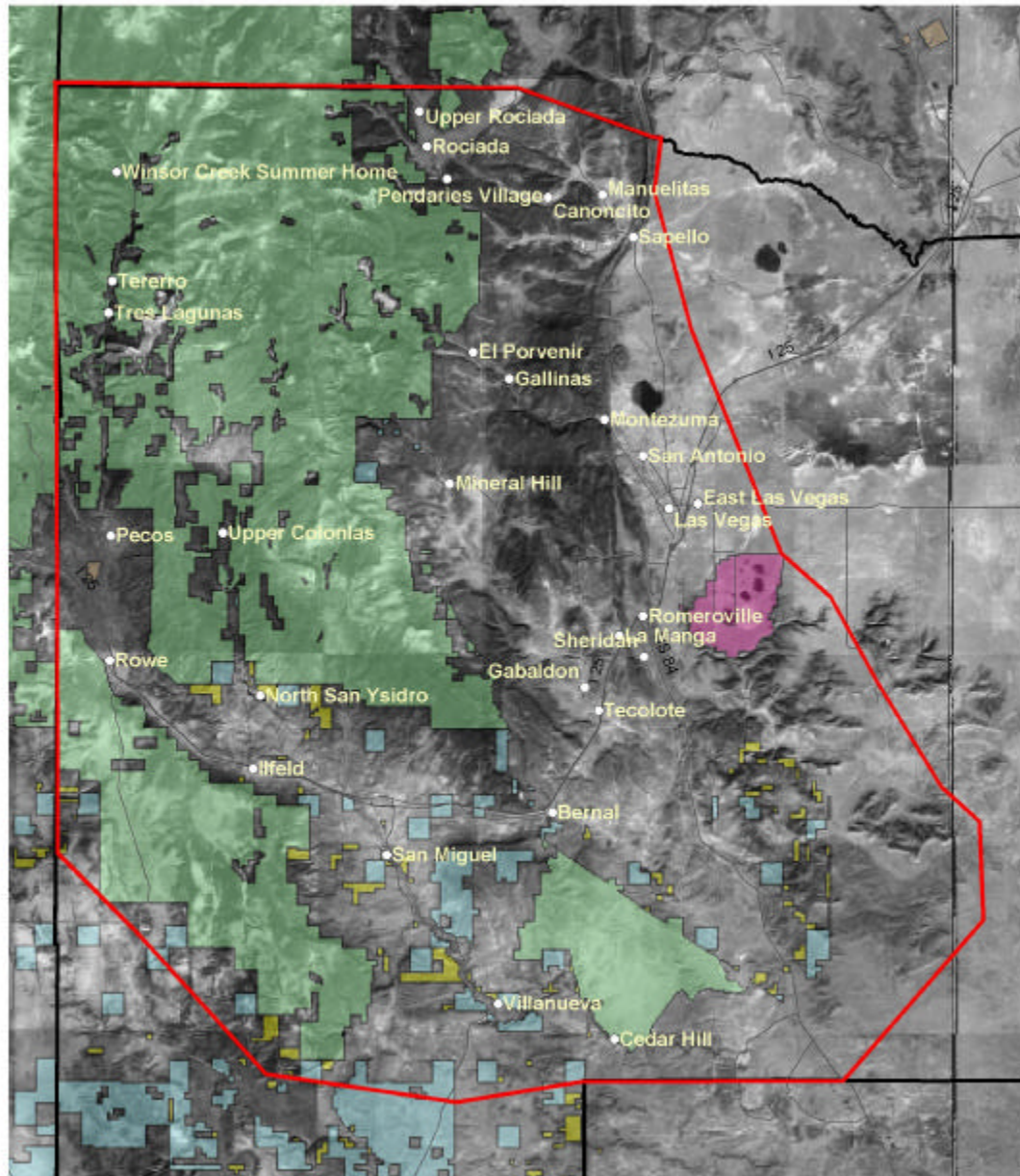


Vicinity



Datum: NAD83 Projection: UTM, Zone 13N
 Base data from NM RGIS Clearinghouse or
 derived by NM Forestry. No warranties are
 made regarding the accuracy of this data.
 Produced by NM EMNRD Forestry Division GIS

09/09/2003



WESTERN SAN MIGUEL

Legend

- Cities and Towns included in CWP Zones
- BUREAU OF LAND MANAGEMENT
- BUREAU OF RECLAMATION
- DEPARTMENT OF THE ARMY
- DEPARTMENT OF DEFENSE
- DEPARTMENT OF ENERGY
- US FOREST SERVICE
- US FISH AND WILDLIFE SERVICE
- TRIBAL OR PUEBLO
- NATIONAL PARK SERVICE
- PRIVATE
- STATE
- STATE GAME AND FISH
- STATE PARKS

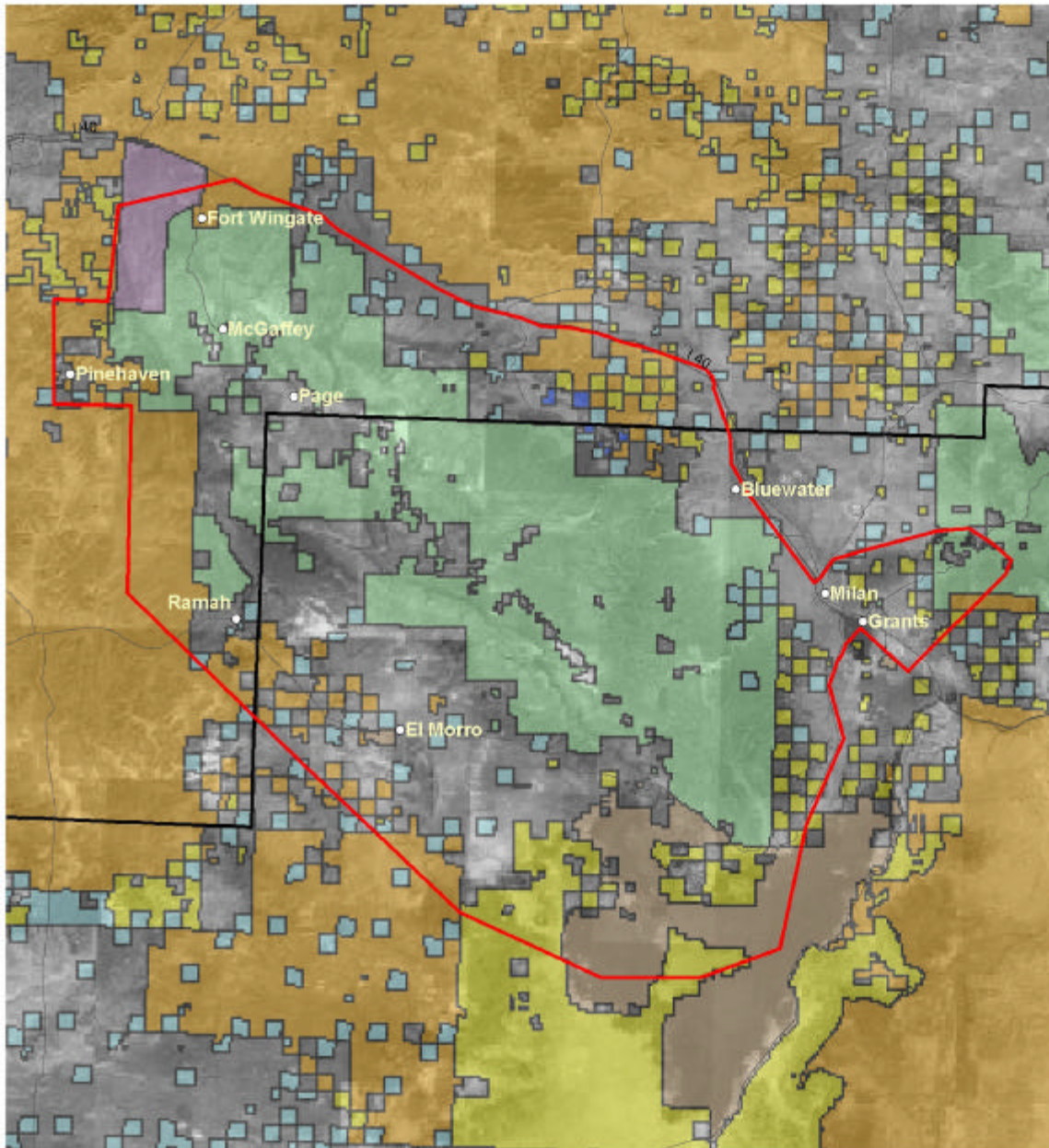


Vicinity



Datum: NAD83 Projection: UTM, Zone 13N
 Base data from NM RGIS Clearinghouse or
 derived by NM Forestry. No warranties are
 made regarding the accuracy of this data.
 Produced by NM EMNRD Forestry Division GIS

03/29/04



ZUNI MOUNTAINS

- CITIES AND TOWNS INCLUDED IN CWP ZONES
- BUREAU OF LAND MANAGEMENT
- BUREAU OF RECLAMATION
- DEPARTMENT OF THE ARMY
- DEPARTMENT OF DEFENSE
- DEPARTMENT OF ENERGY
- US FOREST SERVICE
- US FISH AND WILDLIFE SERVICE
- TRIBAL OR PUEBLO
- NATIONAL PARK SERVICE
- PRIVATE
- STATE
- STATE GAME AND FISH
- STATE PARKS



Vicinity



Datum: NAD83 Projection: UTM, Zone 13N
 Base data from NM RGIS Clearinghouse or
 derived by NM Forestry. No warranties are
 made regarding the accuracy of this data.
 Produced by NM EMNRD Forestry Division GIS

09/09/2003

APPENDIX 4 *

**FIRE PLANNING ASSESSMENTS IN NEW MEXICO
MEDIUM AND SMALL SCALE**

Area	Funding source	Completion date	Available at
Bernalillo County	USFS-SPS7	6/2002	www.nmforestry.com
Catron County	State/local	10/2002	www.nmforestry.com
Grant County	USFS-SPS7	9/2002	www.nmforestry.com
City of Las Vegas	FEMA	10/2003	www.nmforestry.com
Eight N. Pueblos	USFS-SPS7	?	
Los Alamos	FEMA	5/2001	
Mora County	USFS-SPS7	6/2002	www.nmforestry.com
Otero County	USFS-SPS7	9/2003	www.nmforestry.com
Raton/Colfax County	USFS-SPS7	In progress	
Rio Arriba County	USFS-SPS7	9/2003	www.nmforestry.com
Sandoval County	USFS-SPS7	12/2003	www.nmforestry.com
San Miguel County	USFS-SPS7	Fall 2003	
Santa Fe County	State/county	2/2001	www.nmforestry.com
Sierra County	State/local	6/2003	www.nmforestry.com
Sierra Land Grant	USFS-SPS7	9/2002	www.nmforestry.com
Torrance County	USFS-SPS7	12/2003	www.nmforestry.com
Truchas Land Grant	USFS-SPS7	9/2002	www.nmforestry.com

**ADDITIONAL PLANS ADDRESSING FIRE HAZARDS
IN NEW MEXICO**

Area	Funding source	Completion date	Available at
Catron Stewardship	State	1/2002	www.nmforestry.com
Grant Stewardship	State	4/2003	www.nmforestry.com
Hyde State Park	WSFM	6/2001	www.nmforestry.com
N14 Stewardship	WSFM	11/2001	www.nmforestry.com
S14 Stewardship	WSFM	11/2001	www.nmforestry.com
Save Our Bosque Task Force Action Plan	State/local	1/2003	www.nmforestry.com

* This information was originally presented in the 2004 Communities at Risk Plan

APPENDIX 5

REFERENCE LIST:

Wildland/Urban Interface Fire Hazard Assessment Methodology. NWCG, undated (c.1997).

A Collaborative Approach for Reducing Wildland Fire Risks to Communities and the Environment. 10-Year Comprehensive Strategy Implementation Plan. May 2002.

FIELD GUIDANCE Identifying and Prioritizing Communities at Risk. National Association of State Foresters. June 2003

Preparing a Community Wildfire Protection Plan A handbook for Wildland-Urban Interface Communities. Society of American Foresters. March 2004

New Mexico Communities At Risk Assessment Plan Neskauskas et. al. April 2004