

Santa Fe Fireshed Ethnographic Project

The staff of the Santa Fe National Forest is working to implement the *National Cohesive Wildland Fire Management Strategy* that was developed by federal, state, tribal and local governments and stakeholders. It calls on land managers to work collaboratively and use the best science to safely and effectively respond to wildfire, restore and maintain fire resilient landscapes, and promote fire adapted communities. Specifically, the Forest Service will be conducting landscape-scale restoration and watershed management activities in the Greater Santa Fe Fireshed (see map on the back).



Aspen CRM Solutions has been contracted by the U.S. Forest Service to perform an ethnographic assessment of traditional and cultural ways of life associated with the fireshed. We will be contacting tribes and land grant and other historic communities in the Santa Fe area to seek the cooperation of each community to identify their traditional affiliations and uses of the southwestern Sangre de Cristo Mountains.

This project seeks to restore some of the presence/influence of traditional communities in management of this landscape. Such things as traditional stories of significant people, places and beings; boundaries and place names; resource collection areas; and the historic contacts and relationships with other ethnic groups are all indications of a community's presence and use of the land. The project will identify what types of uses the area has seen in the past and what uses continue today, generally where these use areas are located on the landscape, and how future forestry management actions could potentially affect traditional uses and use areas. Aspen will work with each interested group to delineate and summarize the nature of their relationship with the landscape. We understand and respect that some communities may not wish to share sacred or other culturally sensitive material. We can assure each community that any information they do share will be protected and remain confidential.

Tribal and traditional communities will benefit by having input into long-term forestry management of use areas and preservation of traditional use areas. Results of this project will form an important aspect of both short-term and long-term planning efforts by the Forest Service in support of the Greater Fireshed Project.

To provide input, feel free to contact one of the following:

Tamara Stewart
Archaeologist & Co-Principal
Investigator (505) 699-3550,
tamjstewart@yahoo.com

Andy Carey
Ethnographer
(505) 453-8285,
acarey1@unm.edu

Emily Brown
Archaeologist & Co-Principal
Investigator (505) 231-0157,
emily@aspencrmsolutions.com

For more information and announcements of upcoming meetings, visit www.aspencrmsolutions.com.

Greater Santa Fe Fireshed Area ~ Southwestern flanks of the Sangre de Cristo Mountains

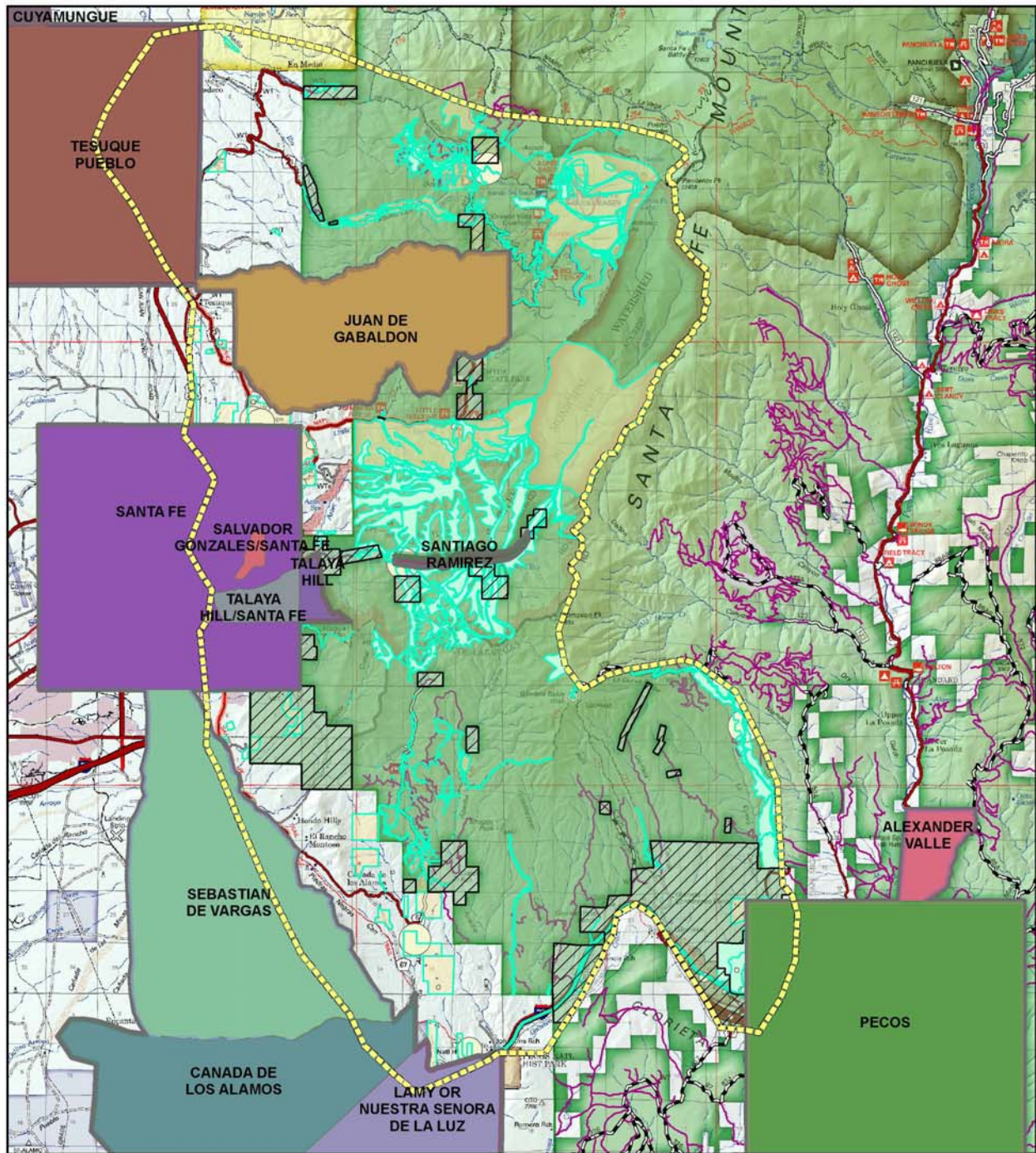


Figure 2: Greater Santa Fe Fireshed Ethnographic Assessment Project Area with Known Land Grants within and adjacent to Forest Lands



Scale 1:200,000

Data Projection: UTM Zone 13N NAD 83



Map produced by A.R. Baldwin
2 March 2017