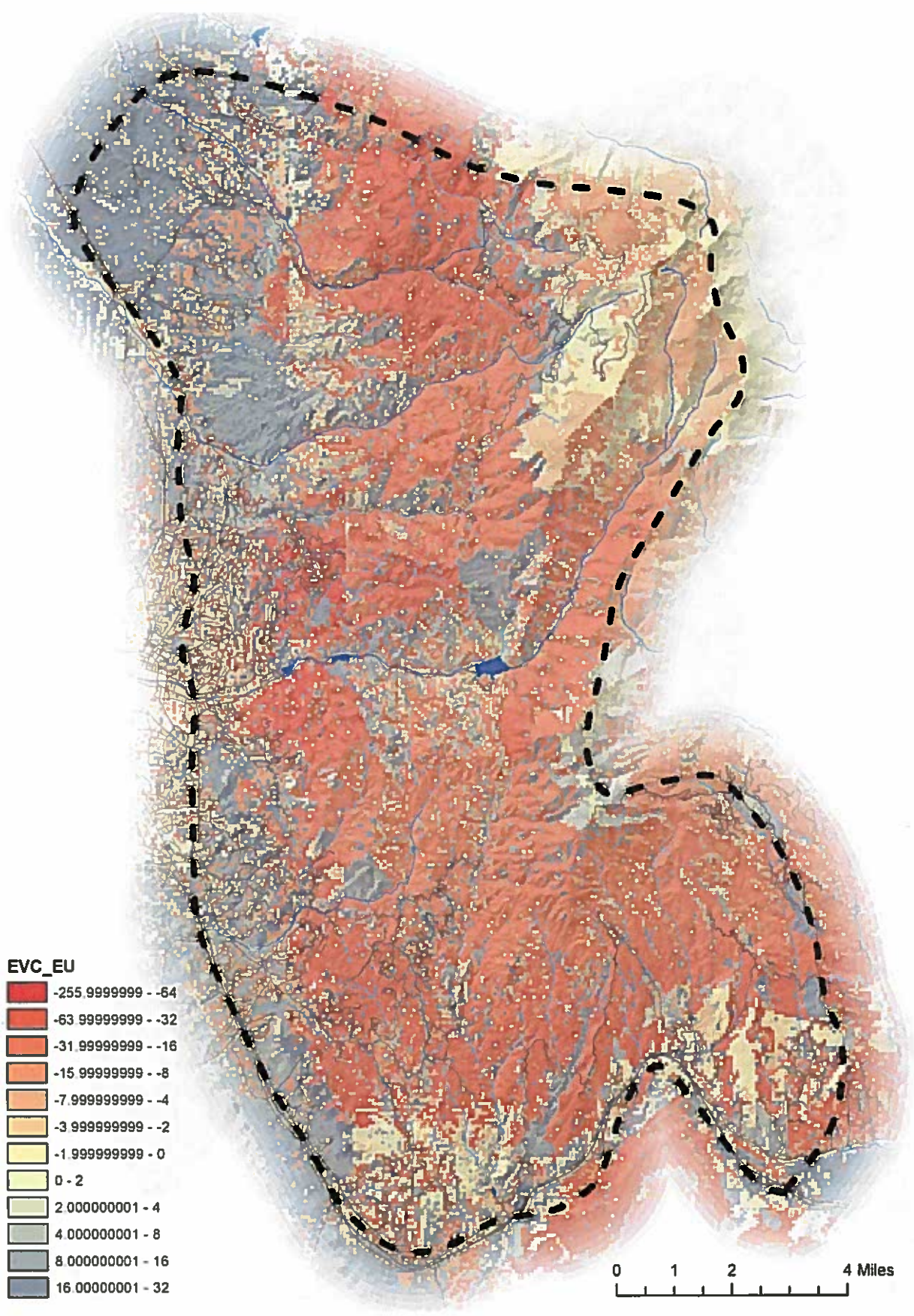


01/10/12

10/10/12

H/O # 2A

170914



**EVC\_EU**

Dark Red	-255.99999999 - -64
Red	-63.99999999 - -32
Orange-Red	-31.99999999 - -16
Orange	-15.99999999 - -8
Light Orange	-7.99999999 - -4
Yellow-Orange	-3.99999999 - -2
Yellow	-1.99999999 - 0
Light Yellow	0 - 2
Light Green	2.000000001 - 4
Green	4.000000001 - 8
Dark Green	8.000000001 - 16
Grey	16.000000001 - 32

