

# The Greater Santa Fe FIRESHED

## WHAT IS A FIRESHED?

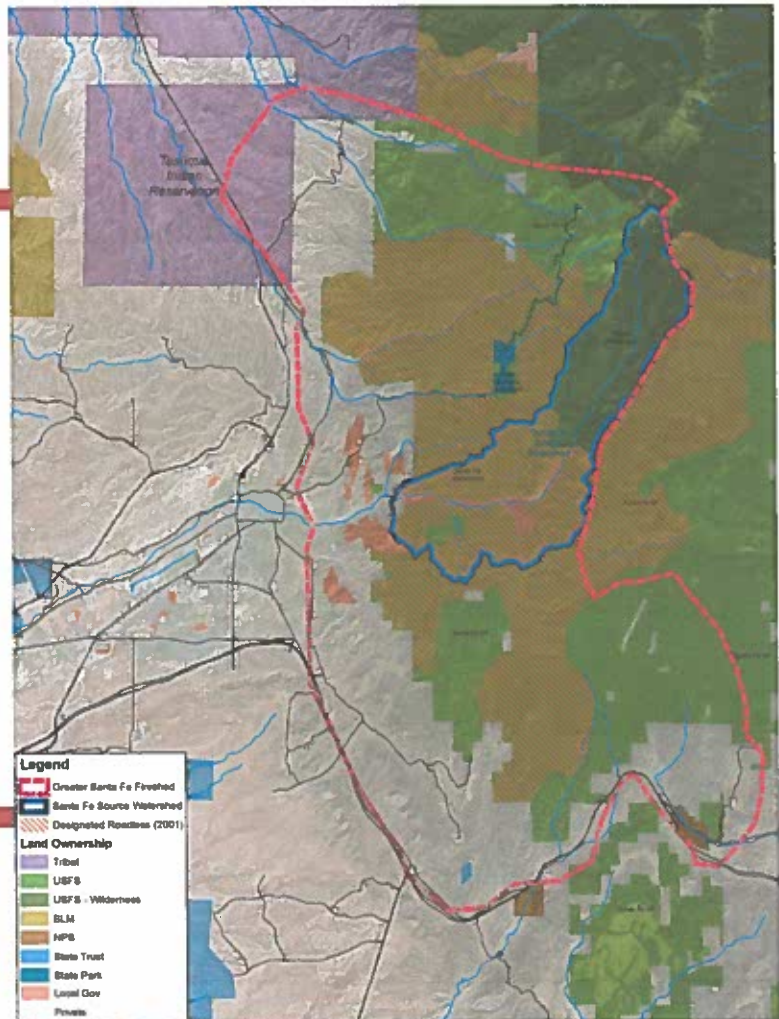
A **watershed** is an area where water that falls within its ridge top boundaries flows from the high country down to a river below.

A **"fired"** is an area where when a fire burns within its boundaries its effects will be felt not only in the burned areas but by all of the ecosystems and communities downstream.

Wildfire moves across the land based on vegetation, wind, and terrain, and with dry and windy conditions, wildfires can quickly spread across large landscapes, often moving across drainages and watersheds.

## THINK LIKE A WILDFIRE

In order to take steps to be adapted to wildfire, we need to think and act at the scale of a wildfire – over large landscapes, crossing property boundaries, and through high and low density communities. Social and ecological concerns regarding wildfire overlap and are intertwined in a fireshed.



**Wildfires can burn at a large scale that connects the high country with downstream communities and resources.**