

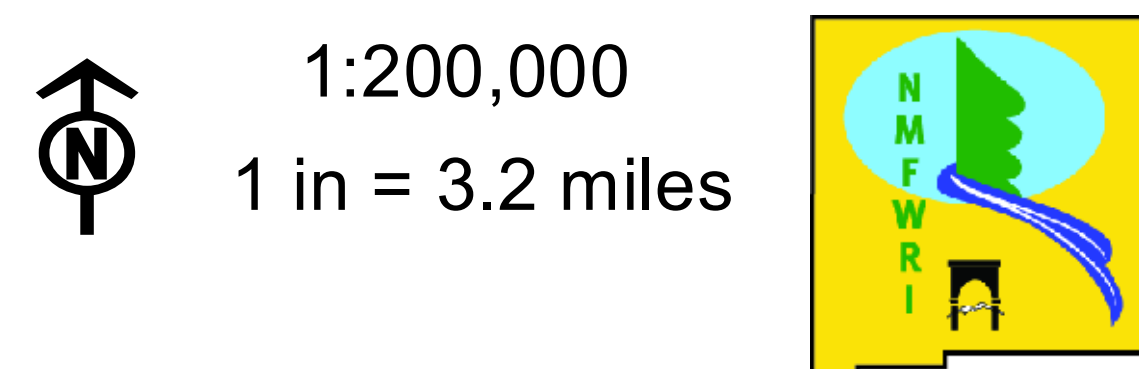
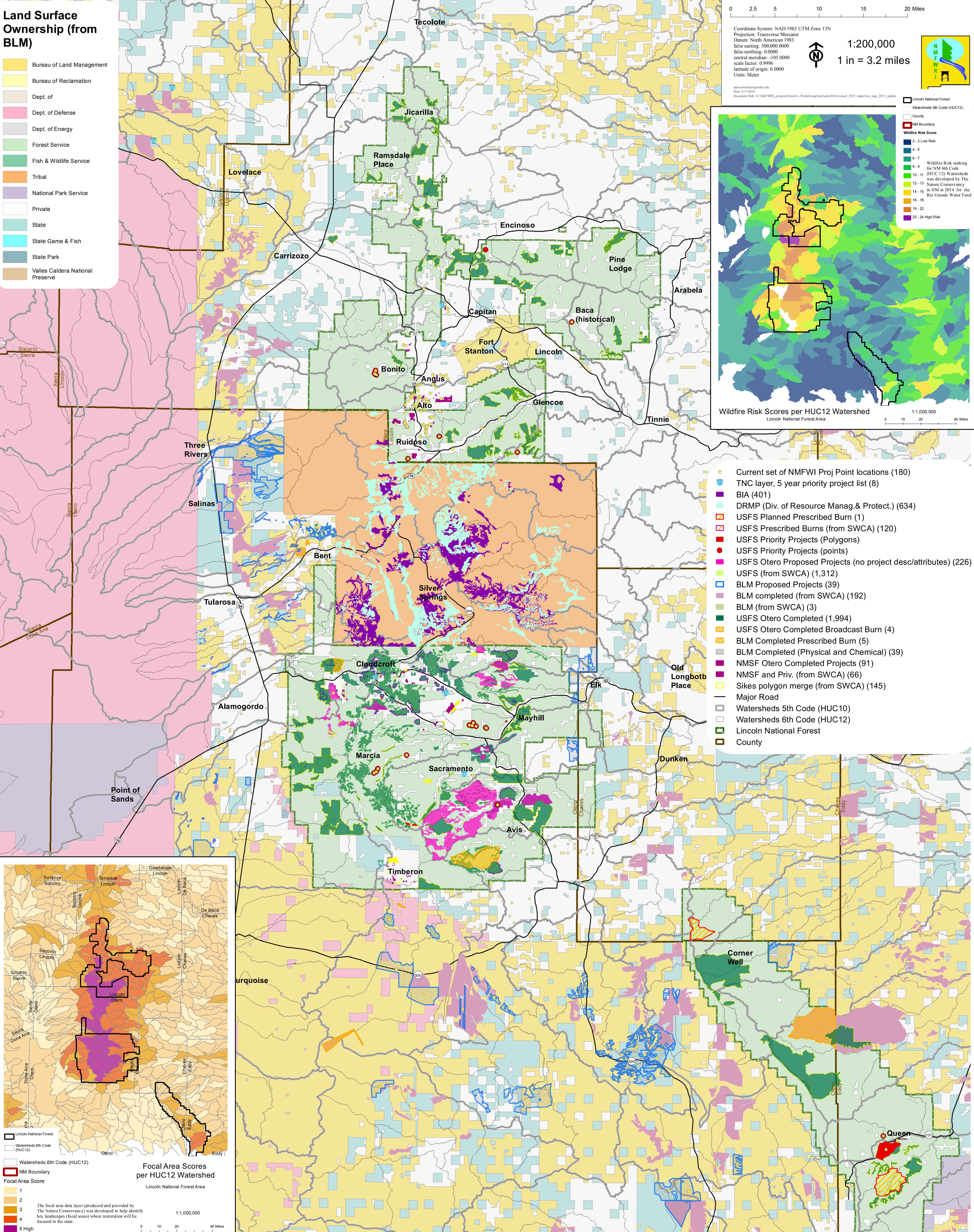
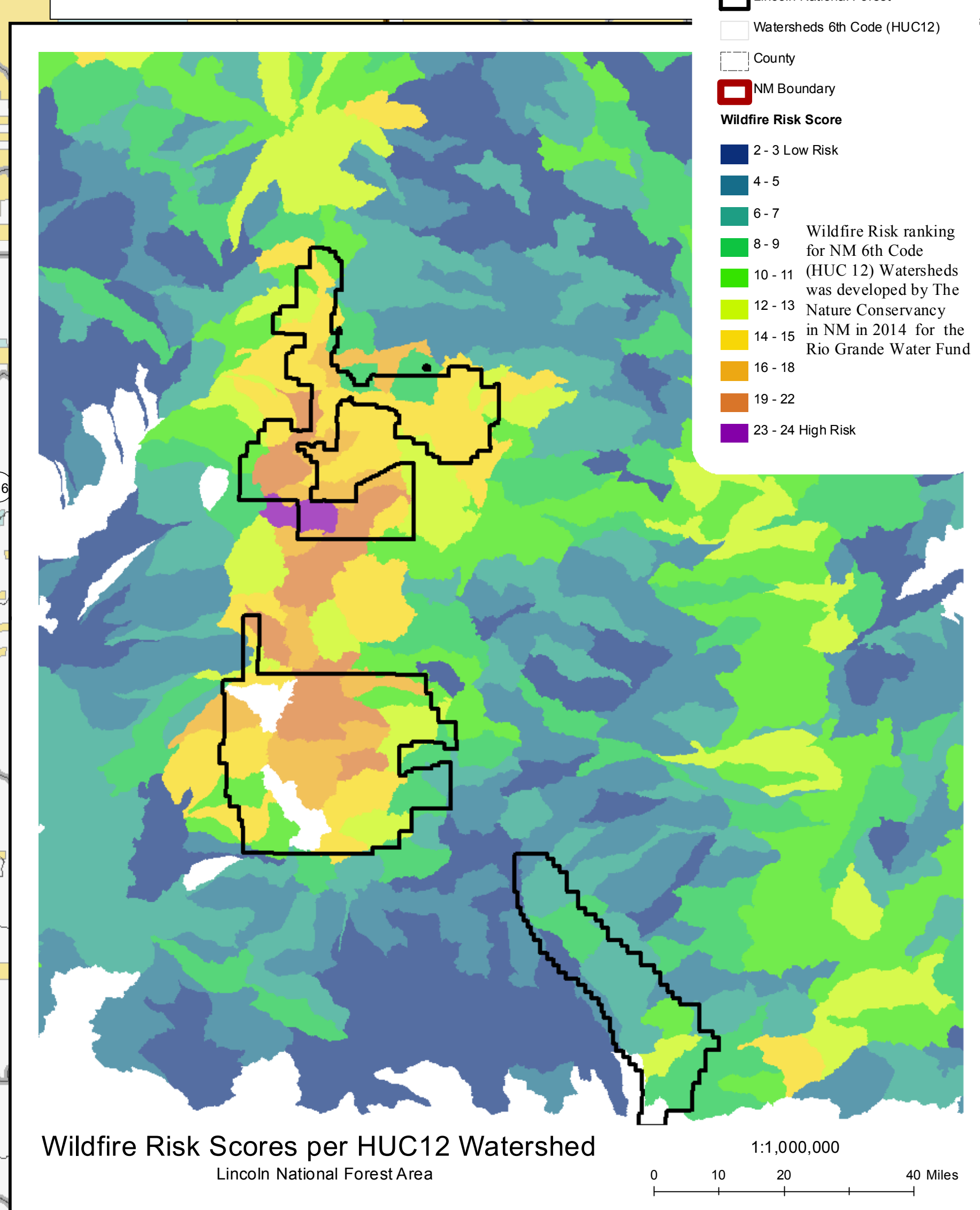
Land Surface Ownership (from BLM)

- Bureau of Land Management
- Bureau of Reclamation
- Dept. of Defense
- Dept. of Energy
- Forest Service
- Fish & Wildlife Service
- Tribal
- National Park Service
- Private
- State
- State Game & Fish
- State Park
- Valles Caldera National Preserve

0 2.5 5 10 15 20 Miles

Coordinate System: NAD 1983 UTM Zone 13N
 Projection: Transverse Mercator
 Datum: North American 1983
 false easting: 500,000.0000
 false northing: 0.0000
 scale factor: 0.9996
 latitude of origin: 0.0000
 Units: Meter

1:200,000
 1 in = 3.2 miles

- Current set of NMFWI Proj Point locations (180)
- TNC layer, 5 year priority project list (8)
- BIA (401)
- DRMP (Div. of Resource Manag. & Protect.) (634)
- USFS Planned Prescribed Burn (1)
- USFS Prescribed Burns (from SWCA) (120)
- USFS Priority Projects (polygons)
- USFS Priority Projects (points)
- USFS Otero Proposed Projects (no project desc/attributes) (226)
- USFS (from SWCA) (1,312)
- BLM Proposed Projects (39)
- BLM completed (from SWCA) (192)
- BLM (from SWCA) (3)
- USFS Otero Completed (1,994)
- USFS Otero Completed Broadcast Burn (4)
- BLM Completed Prescribed Burn (5)
- BLM Completed (Physical and Chemical) (39)
- NMSF Otero Completed Projects (91)
- NMSF and Priv. (from SWCA) (66)
- Sikes polygon merge (from SWCA) (145)
- Major Road
- Watersheds 5th Code (HUC10)
- Watersheds 6th Code (HUC12)
- Lincoln National Forest
- County

