

Tularosa Basin and Sacramento Mountains Hydrogeology Study Information


And other groundwater information prepared for the Otero Co Work Group Feb. 2016

A similar interactive version of this map is available to view on internet at <http://nmhu.maps.arcgis.com/home/item.html?id=7fdf3679cbe24da3b9de6e4850f09383>
 If you would like the link above to be sent to you by email please write to adriennemiller@nmhu.edu. One can identify names of sites and wells using the interactive map, and use the "web map" to answer a variety of questions about this area. Check it out!
 The map can be removed from internet if group would prefer.






Legend

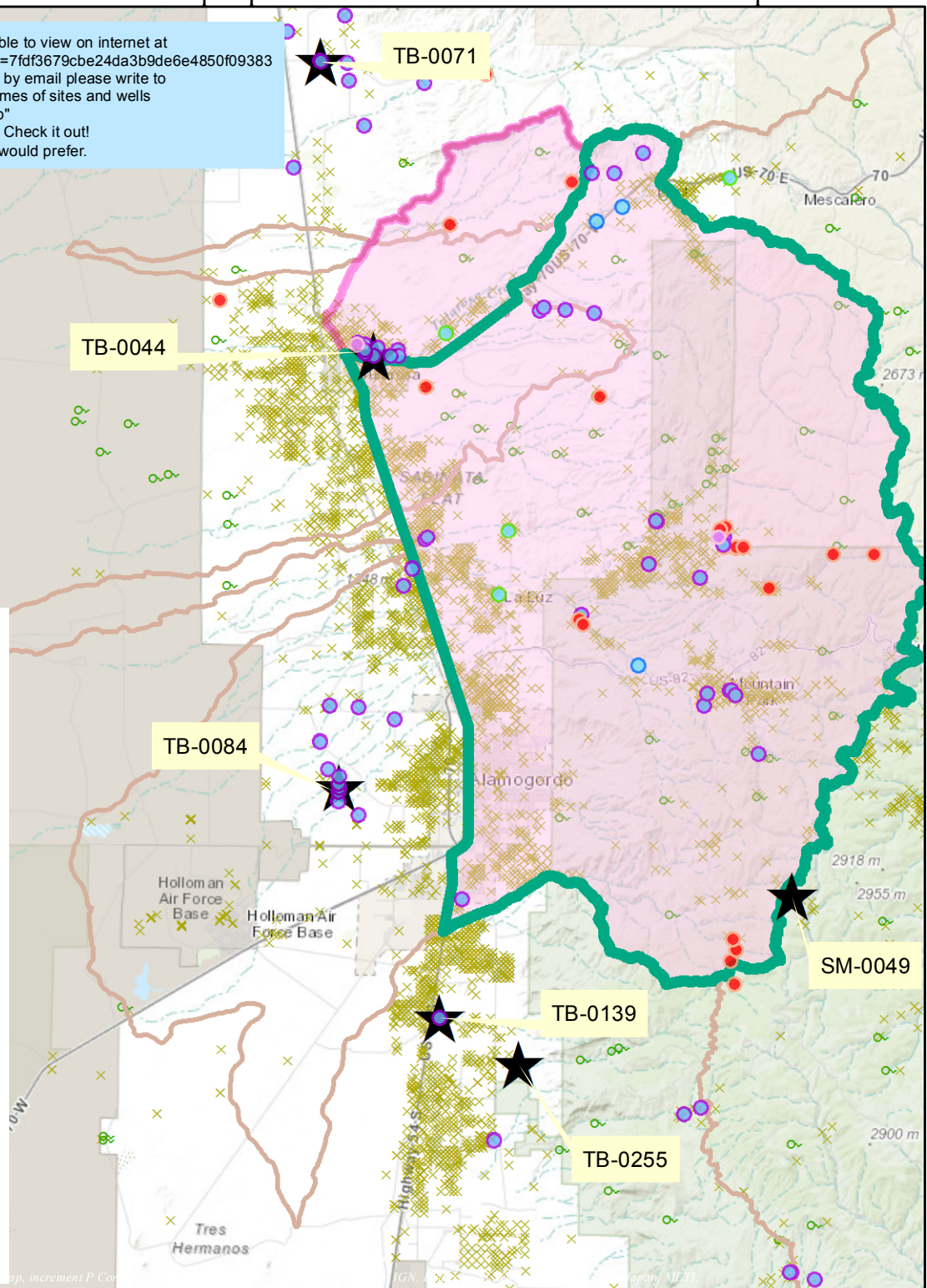
-  Two Goats High Rolls Maruchi Focus Area Option 2
-  Two Goats High Rolls Maruchi Focus Area Option 1
-  Priority Area (current DRAFT)
-  Springs (GNIS) (88)
-  Wells (modified from download of OSE May 2015 version) (5,409)

TB and SM Hydrogeologic Study Points

-  Water Level Monitoring Locations (from TBSMDiver.xls) (6)

Water Source Sites Studied (from Appendix1_Allinventory.xls)

-  Ephemeral stream (4)
-  Groundwater other than spring (well) (71)
-  Meteorological (rain, snow) (2)
-  Perennial stream (3)
-  Spring (23)



Water Source Sites and Water Level Monitoring Locations were provided by Stacy Timmons for this map. They related to this study:

Ethan A. Mamer, Talon B. Newton, Daniel J. Koning, Stacy S. Timmons, and Shari A. Kelley, 2014, Northeastern Tularosa Basin regional hydrogeology study, New Mexico:

New Mexico Bureau of Geology and Mineral Resources

Open file report 562, <<http://geoinfo.nmt.edu/publications/openfile/details.cfm?volume=562>>

For more info about these two point layers please contact:

Stacy S. Timmons

Hydrogeologist / Aquifer Mapping Program Manager

NM Bureau of Geology & Mineral Resources, New Mexico Tech

801 Leroy Place, Socorro, NM, 87801

Office: 575-835-6951

geoinfo.nmt.edu/resources/water/amp

