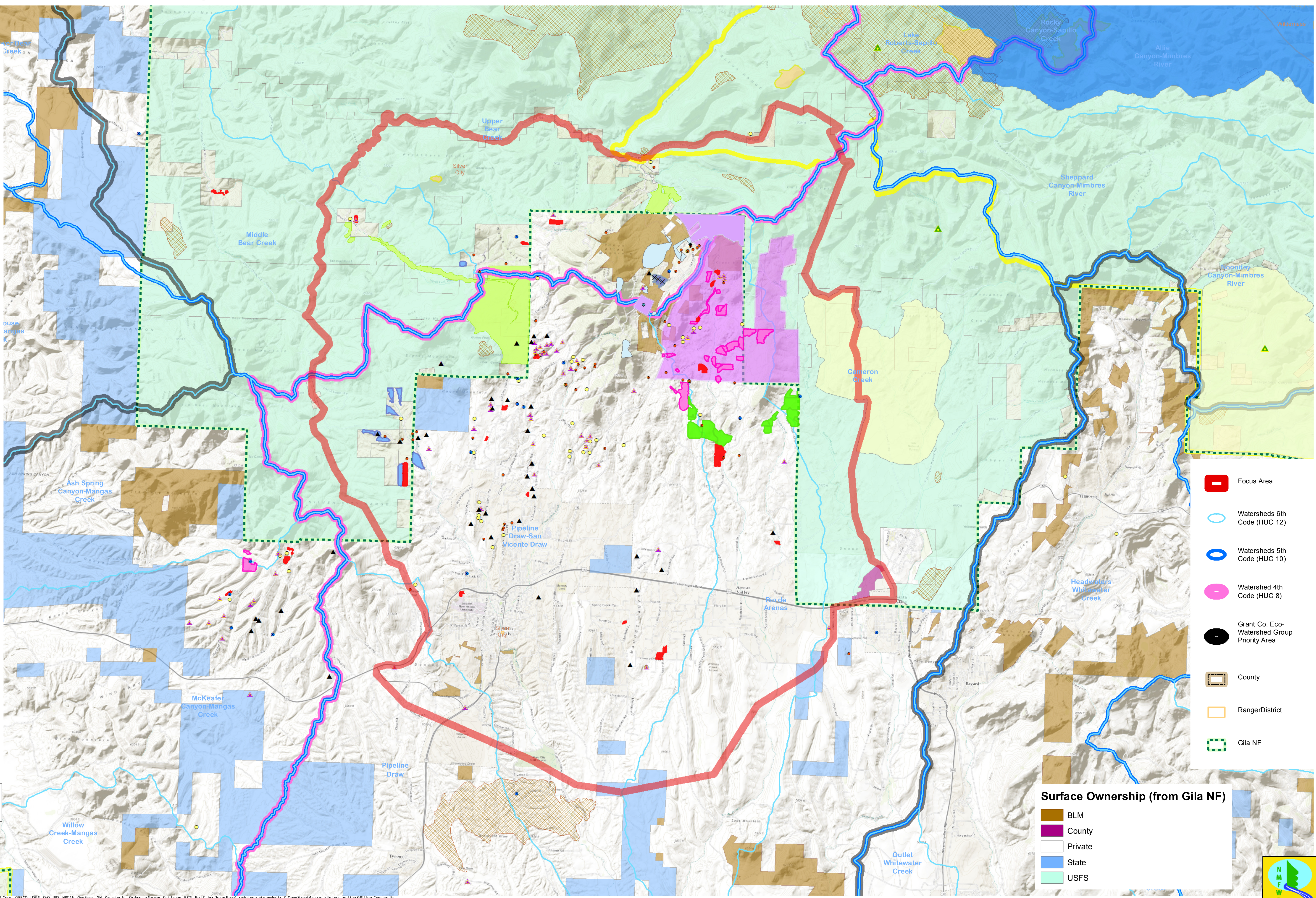


- ### Project Areas Completed and Planned
- BLM Completed 2006-2010 (2)
 - × BLM Proposed (3)
 - ▲ Gila NF Grant Co Projects planned for 2015-2016 (3)
 - ▲ Grant SWCD 06 WUI (37)
 - ▲ Grant SWCD 05 WUI (54)
 - Grant SWCD 03 WUI (53)
 - Grant SWCD 08 WUI (21)
 - Grant SWCD 04 Haz Fuels (52)
 - 2011 Grant County WUI (31)
 - 2008 XYZ NFL (13)
 - 2011 Sanctuary NFL (24)
 - 2009 Cottage San NFL (9)
 - Sancturay 2 and 3, 2012 and 2014 NFL (6)
 - BLM Proposed Physical Trtmt (3)
 - BLM Completed (Physical) (2)
 - Silver City District (NEPA completed) (2)
 - Gila NF Grant Co FACTS Activities 2005-2014 (4,4293 acres) (7)
 - Prescribed Fire (3)
 - Wildfire (20)
 - Wildfire Use (5)
 - USFS Priority Landscape (2)

WUI: Wildland Urban Interface
 NFL: Non-Federal Lands, a grant given by the Forest Service for thinning on private land.
 FACTS: Forest Service Activity Tracking System.

Coordinate System: NAD 1983 UTM Zone 13N
 Projection: Transverse Mercator
 Datum: North American 1983
 false easting: 500,000.0000
 false northing: 0.0000
 central meridian: -105.0000
 scale factor: 0.9996
 latitude of origin: 0.0000
 Units: Meter

Service Layer Credits: Sources: Esri, HERE, DeLorme, TomTom, Intermap, increment P Corp., GEBCO, USGS, FAO, NPS, NRCAN, GeoBase, IGN, Kadaster NL, Ordnance Survey, Esri Japan, METI, Esri China (Hong Kong), swisstopo, MapmyIndia, © OpenStreetMap contributors, and the GIS User Community



- Focus Area
- Watersheds 6th Code (HUC 12)
- Watersheds 5th Code (HUC 10)
- Watershed 4th Code (HUC 8)
- Grant Co. Eco-Watershed Group Priority Area
- County
- Ranger District
- Gila NF

- ### Surface Ownership (from Gila NF)
- BLM
 - County
 - Private
 - State
 - USFS



0 1 2 4 Miles

1:48,000
1 inch = 4,000 feet

0 5,000 10,000 20,000 Feet

