

## Planned Watershed Treatment Projects 2014 to 2016 (Pending Funding)

Calendar Year	Forest/Working Circle	Project Name	Land Status	Environmental Clearance Status	Treatment Type	Acres
2014	Cibola NF/Sandia - Manzano	Thunderbird	Forest Service	Complete	Cut, Skid and Deck	181
	Cibola NF/Sandia - Manzano	Espinoso	Forest Service	Complete	Harvest and Remove	40
	Cibola NF/Sandia - Manzano	Tablezon	Forest Service	Complete	Thin/Remove/Mastication	196
	Cibola NF/Sandia - Manzano	Sulphur Water Fund 1 and 2	Forest Service	Complete	Thin/Remove/Mastication	175
	Cibola NF/Sandia - Manzano	Sulphur-Sub Unit B	Forest Service	Complete	Thin/Remove/Mastication	312
	Cibola NF/Sandia - Manzano	Northern Hondo	Forest Service	Complete	Thin/Remove/Mastication	135
	Cibola NF/Sandia - Manzano	Osborne Allotment	Forest Service	Complete	Thin/Remove/Mastication	900
	Cibola NF/Sandia - Manzano	Pueblo Blanco	Forest Service	Complete	Thin/Remove/Mastication	400
	Cibola NF/Sandia - Manzano	Pueblo Colorado	Forest Service	Complete	Thin/Remove/Mastication	15,000
	Cibola NF/Sandia - Manzano	Doghead	Forest Service	Complete	Thin/Remove/Mastication	2,000
	Gila/A-S/Reserve	Six Shooter/Black Deer	Forest Service	Complete	Harvest and Remove	805
	Sacramento Mts./Private land	Sacramento Camp	Private	N/A	Thin	200
	Sacramento Mts./Private land	Coleman Ranch	Private	N/A	Thin	~ 10,000

Blue indicates within Rio Grande Water Fund area; Green (low) to Red (high) indicates RGWF Focal Area Score; Gray indicates uncertain or unknown data

Calendar Year	Forest/Working Circle	Project Name	Land Status	Environmental Clearance Status	Treatment Type	Acres
	Sacramento Mts./Private land	West Side Road	Municipal		Thin	200
	Sacramento Mts./Private land	Indian Divide	Private	N/A	Thin	400
	Sacramento Mts./Private land	Peebles Ranch	Private	N/A	Thin	400
	Santa Fe/Southern Sangre	La Cueva	FS/Private	Complete	Thin	200
	Chama	Rancho Del Oso Pardo	Private	N/A	Thin	400
	Chama	Rancho Lobo	Private	N/A	Thin	800
	Chama	Chromo Mountain	Private	N/A	Thin	200
	Chama	Quinlan Ranches	Private	N/A	Thin	1,060
	Chama	Wolf Creek	Private	N/A	Thin	200
	Chama	Chama Land & Cattle (BIA/Jicarilla Trust)	Tribal	Complete	Thin	400
	Eastside Sangre/Las Vegas	Los Vigiles	Land Grant	N/A	Thin	200
	Eastside Sangre/Las Vegas	Gallinas Municipal Watershed	Forest Service	Complete	Thin	750
	Eastside Sangre/Las Vegas	Morada de Santana	Land Grant	N/A	Thin	100
	Taos Field Office	Cerro Montoso	BLM	Complete	Thin/Rx Fire	1,800
	Taos Field Office	Guadalupe Mountain	BLM	Complete	Thin/Harvest and Remove/Rx Fire	550

Blue indicates within Rio Grande Water Fund area; Green (low) to Red (high) indicates RGWF Focal Area Score; Gray indicates uncertain or unknown data

Calendar Year	Forest/Working Circle	Project Name	Land Status	Environmental Clearance Status	Treatment Type	Acres
	Taos Field Office	Wind Mountain	BLM	Complete	Harvest and Remove/Rx Fire	1,250
	Taos Field Office	Gorham	BLM	Complete	Thin/Harvest and Remove/Rx Fire	840
	Taos Field Office	31 Mile	BLM	Complete	Thin/Harvest and Remove/Rx Fire	600
	Taos Field Office	Cebolla	BLM	Complete	Rx Fire	1,000
	Taos Field Office	Arroyo Chamizal	BLM	Complete	Rx Fire	300
	Taos Field Office	Buckman	BLM	NEPA Pending	Thin/Rx Fire	40
	Taos Field Office	Copper Hill WUI	BLM	Complete	Rx Fire	120
	Farmington Field Office	Knickerbocker	BLM	Complete	Rx Fire	300
	Farmington Field Office	Lindrith	BLM	Complete	Thin/Harvest and Remove	400
	Farmington Field Office	Carrizo	BLM	Complete	Thin/Rx Fire	3900
	Farmington Field Office	Farmington TEB	BLM	Complete	Rx Fire	2000
	Farmington Field Office	Largo	BLM	Complete	Thin/ Rx Fire	800
	Farmington Field Office	River Tracts	BLM	Complete	Thin/ Rx Fire	750
	Cibola NF - Socorro Field Office - Magdalena	East Magdalena	FS/BLM	Complete	Rx Fire	8,100
	Socorro Field Office	Highway	BLM	Complete	Rx Fire	2530
	Socorro Field Office	Chupadera	BLM	Complete	Thin/Remove	665

Blue indicates within Rio Grande Water Fund area; Green (low) to Red (high) indicates RGWF Focal Area Score; Gray indicates uncertain or unknown data

Calendar Year	Forest/Working Circle	Project Name	Land Status	Environmental Clearance Status	Treatment Type	Acres
	Socorro Field Office	Wolf Wells	BLM	Complete	Thin/Remove	850
	Socorro Field Office	Pie Town	BLM	Complete	RX Fire/Masticate	470
	Socorro Field Office	Wildhorse	BLM	Complete	RX Fire	170
	Socorro Field Office	Chupadera	BLM	Complete	Thin	200
	Rio Puerco Field Office	Zuni Mountain	BLM	Complete	Thin	100
	Rio Puerco Field Office	Mesa Chivato	BLM	Complete	RX Fire	3,000
	Rio Puerco Field Office	Merts Ranch	BLM	Complete	RX Fire	2,400
	Rio Puerco Field Office	Cerro Comadre	BLM	Complete	Thin	41
	Rio Puerco Field Office	Elk Springs	BLM	Complete	Thin	100
	Rio Puerco Field Office	Candy Kitchen	BLM	Complete	Thin/Pile	150
	Rio Puerco Field Office	Merts Ranch	BLM	Complete	Thin	475
	Rio Puerco Field Office	Tent Rocks	BLM	Complete	RX Fire / Chipping	490
	Rio Puerco Field Office	Cuba	BLM	Complete	RX Fire	155
	Bernalillo District N6S	Hyde Park	State	Archeology	Thin	
	Bernalillo District N6S	Pena Blanca	MRGCD	Complete	Remove non-native trees	
	Bernalillo District N6S	Village of Corrales	MRGCD	Pending	Remove non-native trees	
	Bernalillo District N6S	Valencia County Bosque	MRGCD	Complete	Remove non-native trees	

Blue indicates within Rio Grande Water Fund area; Green (low) to Red (high) indicates RGWF Focal Area Score; Gray indicates uncertain or unknown data

Calendar Year	Forest/Working Circle	Project Name	Land Status	Environmental Clearance Status	Treatment Type	Acres
	Bernalillo District N6S	Santa Fe County	SLO	Complete	Pinon/juniper thinning	
	Bernalillo District N6S	Santa Fe City	Municipal	Pending	Thin	
	Bernalillo District N6S	Valles Caldera/Mora	Valles Caldera Trust	Pending		
	Bernalillo District N6S	Manzano State Park	State	Complete	Thin	
	Bernalillo District N6S	Claunch-Pinto Estancia Basin	Private/State/County	Complete	Thin	
	Bernalillo District N6S	Santa Ana	Tribal	Pending	Thin	
2015	Cibola NF/Sandia - Manzano	Cedro	Forest Service	NEPA Pending/ Fall of 2014	Thin and lop/harvest and remove/mastication	3,220
	Santa Fe/Jemez	SW Jemez	Forest Service	NEPA Pending/ Fall of 2014	Thin/harvest and remove/mastication	3000+
	Gila/A-S/Reserve	Shooter	Forest Service	Complete	Harvest and Remove	753
	Gila/A-S/Reserve	Doe Gun	Forest Service	Complete	Harvest and Remove	1,167
	Gila/Mimbres	GG	Forest Service	NEPA Pending	Thin	500
	Sacramento Mts./Private land/State Land	Circle Cross Ranch/State Land	State	Pending (EA)	Thin and lop/harvest and remove/mastication	3,000
	Taos Field Office	Cerro Montoso	BLM	Complete	Thin/Rx Fire	1,000
	Taos Field Office	Wind Mountain	BLM	Complete	Thin/Harvest and Remove/Rx Fire	1,100
	Taos Field Office	Gorham	BLM	Complete	Thin/Harvest and Remove/Rx Fire	1,100
	Taos Field Office	Buckman	BLM	NEPA Pending	Thin/Rx Fire	100

Blue indicates within Rio Grande Water Fund area; Green (low) to Red (high) indicates RGWF Focal Area Score; Gray indicates uncertain or unknown data

Calendar Year	Forest/Working Circle	Project Name	Land Status	Environmental Clearance Status	Treatment Type	Acres
	Taos Field Office	Rio de las Trampas Watershed	BLM	NEPA Pending	Thin/Rx Fire	400
	Taos Field Office	31 Mile	BLM	Complete	Harvest and Remove/Rx Fire	400
	Farmington Field Office	Knickerbocker	BLM	Complete	Rx Fire	100
	Farmington Field Office	Lindrith	BLM	Complete	Thin/Harvest and Remove	400
	Farmington Field Office	River Tracts	BLM	Complete	Thin	250
	Farmington Field Office	Carrizo	BLM	Complete	Thin/Rx Fire	3,900
	Farmington Field Office	Farmington TEB	BLM	Complete	Rx Fire	2,000
	Farmington Field Office	Largo	BLM	Complete	Thin/ Rx Fire	800
	Socorro Field Office	Pelona	BLM/State/PVT	Complete	RX Fire	15,000
	Socorro Field Office	Datil	BLM	Complete	Thin/Pile/Remove	250
	Socorro Field Office	Wolf Wells	BLM	Complete	Thin/Remove	600
	Socorro Field Office	Chupadera	BLM/State/PVT	Complete	Remove/RX Fire	2,100
	Socorro Field Office	Pie Town	BLM	Complete	Mastication	200
	Rio Puerco Field Office	Elk Springs	BLM	Complete	Thin	100
	Rio Puerco Field Office	Chain of Craters	BLM/State	Complete	RX Fire	3,000
	Rio Puerco Field Office	Mesa Chivato	BLM	Complete	RX Fire	2,000
	Rio Puerco Field Office	Candy Kitchen	BLM	Complete	RX Fire	680

Blue indicates within Rio Grande Water Fund area; Green (low) to Red (high) indicates RGWF Focal Area Score; Gray indicates uncertain or unknown data

Calendar Year	Forest/Working Circle	Project Name	Land Status	Environmental Clearance Status	Treatment Type	Acres
	Rio Puerco Field Office	Merts Ranch	BLM	Complete	Thin	230
	Rio Puerco Field Office	Zuni Mountain	BLM	Complete	Mastication	130
2016	Gila/A-S/Reserve	Buck Fawn	Forest Service	NEPA Pending	Harvest and Remove	692
	Gila/A-S/Reserve	Burro 1	Forest Service	NEPA Pending	Harvest and Remove	1,000
	Santa Fe/Jemez	SW Jemez	Forest Service	NEPA Pending/ Fall of 2014	Thin/harvest and remove/mastication	3000+
	Cibola NF/Sandia - Manzano	La Madera	Forest Service	NEPA Pending	Thin and lop/harvest and remove/mastication	18,000
	Alamo Navajo	Alamo	Alamo Navajo	NEPA Pending	Thin and lop/harvest and remove/mastication	
	Taos Field Office	31 Mile	BLM	Complete	Thin/Harvest and Remove/ Rx Fire	600
	Taos Field Office	Cerro Montoso	BLM	Complete	Thin/Rx Fire	1,500
	Taos Field Office	Gorham	BLM	Complete	Rx Fire	400
	Taos Field Office	Wind Mountain	BLM	Complete	Thin/Harvest and Remove/Rx Fire	1,100
	Taos Field Office	Rio de las Trampas Watershed	BLM	Complete	Thin/Rx Fire	400
	Farmington Field Office	Knickerbocker	BLM	Complete	Rx Fire	100
	Farmington Field Office	Lindrith	BLM	Complete	Thin/Harvest and Remove	400
	Farmington Field Office	River Tracts	BLM	Complete	Thin/ Rx Fire	750
	Farmington Field Office	Carrizo	BLM	Complete	Thin/Rx Fire	3,900

Blue Indicates within Rio Grande Water Fund area; Green (low) to Red (high) indicates RGWF Focal Area Score; Gray indicates uncertain or unknown data

Calendar Year	Forest/Working Circle	Project Name	Land Status	Environmental Clearance Status	Treatment Type	Acres
	Farmington Field Office	Farmington TEB	BLM	Complete	Rx Fire	2,000
	Farmington Field Office	Largo	BLM	Complete	Thin/ Rx Fire	800
	Socorro Field Office	Datil	BLM	Complete	RX Fire	50
	Socorro Field Office	Wildhorse	BLM	Complete	Thin/Pile	150
	Socorro Field Office	Wolf Wells	BLM	Complete	Remove	300
	Socorro Field Office	Chupadera	BLM	Complete	Remove	300
	Socorro Field Office	Pelona	BLM/State/PVT	Complete	RX Fire	8,500
	Socorro Field Office	Magdalena	BLM	Complete	Thin	100
	Socorro Field Office	McBroom	BLM	NEPA Pending	Thin	400
	Rio Puerco Field Office	Elk Springs	BLM	Complete	Thin/Rx Fire	500
	Rio Puerco Field Office	Mesa Chivato	BLM	Complete	Thin	100
	Rio Puerco Field Office	Candy Kitchen	BLM	Complete	RX Fire	250
	Rio Puerco Field Office	Merts Ranch	BLM	Complete	Thin	260
	Rio Puerco Field Office	Zuni Mountain	BLM	Complete	Remove	50

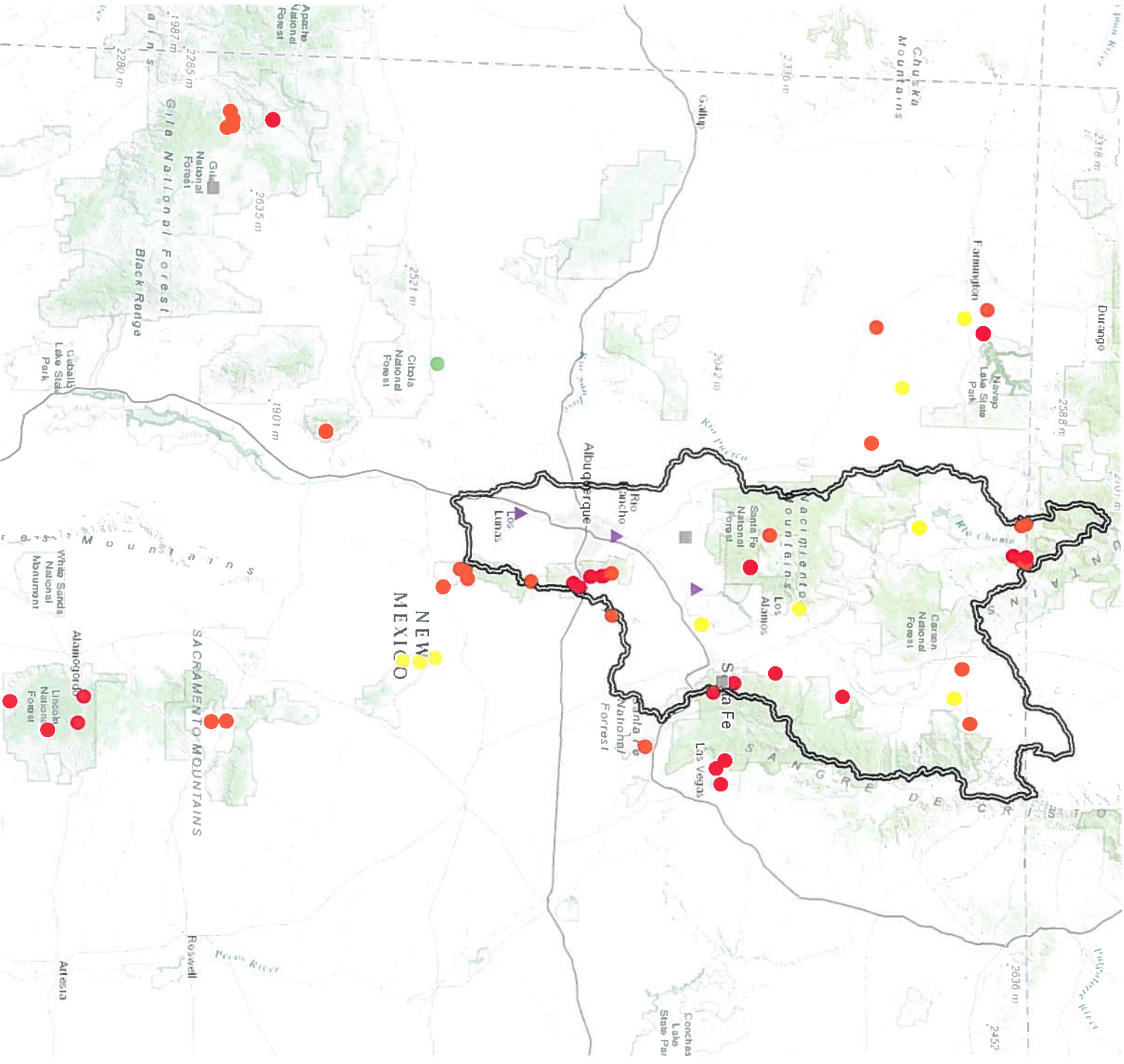
Blue indicates within Rio Grande Water Fund area; Green (low) to Red (high) indicates RGWF Focal Area Score; Gray indicates uncertain or unknown data



# Current and Pending Projects: 2014 to 2016

## Legend

- Forest Treatments
- Focal Area Score
- Bosque Treatments
- Uncertain Location



Statewide Focal Area Analysis

